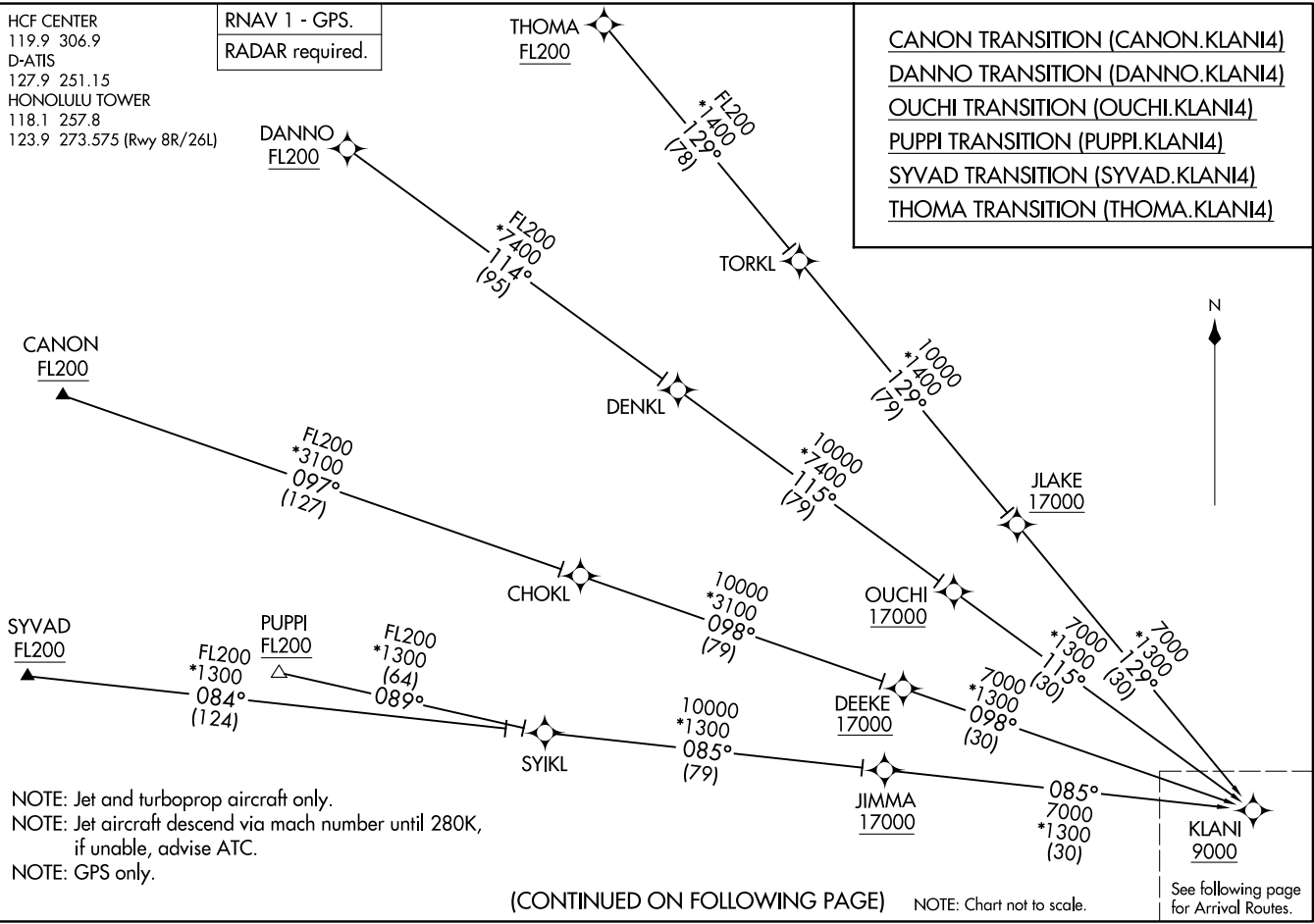


KLANI FOUR ARRIVAL (RNAV) Transition Routes
(KLANI.KLANI4) 20FEB25
HONOLULU, HAWAII DANIEL K INOUE INTL (HNTL) (PHNTL)

HCF CENTER
119.9 306.9
D-ATIS
127.9 251.15
HONOLULU TOWER
118.1 257.8
123.9 273.575 (Rwy 8R/26L)

RNAV 1 - GPS.
RADAR required.

CANON TRANSITION (CANON.KLANI4)
DANNO TRANSITION (DANNO.KLANI4)
OUCHI TRANSITION (OUCHI.KLANI4)
PUPPI TRANSITION (PUPPI.KLANI4)
SYVAD TRANSITION (SYVAD.KLANI4)
THOMA TRANSITION (THOMA.KLANI4)



NOTE: Jet and turboprop aircraft only.
NOTE: Jet aircraft descend via mach number until 280K, if unable, advise ATC.
NOTE: GPS only.

(CONTINUED ON FOLLOWING PAGE)

NOTE: Chart not to scale.

See following page for Arrival Routes.

(KLANI.KLANI4) 25051
KLANI FOUR ARRIVAL (RNAV) Transition Routes
A1-74 (FAA)
DANIEL K INOUE INTL (HNTL) (PHNTL)
HONOLULU, HAWAII

KLANI FOUR ARRIVAL (RNAV) Arrival Routes
(KLANI, KLANI4) 20FEB25
HONOLULU, HAWAII
DANIEL K INOUYE INTL (HNL) (PHNL)

HCF CENTER
119.9 306.9
D-ATIS
127.9 251.15
HONOLULU TOWER
118.1 257.8
123.9 273.575 (Rwy 8R/26L)

RNAV 1 - GPS.
RADAR required.

ARRIVAL ROUTE DESCRIPTION

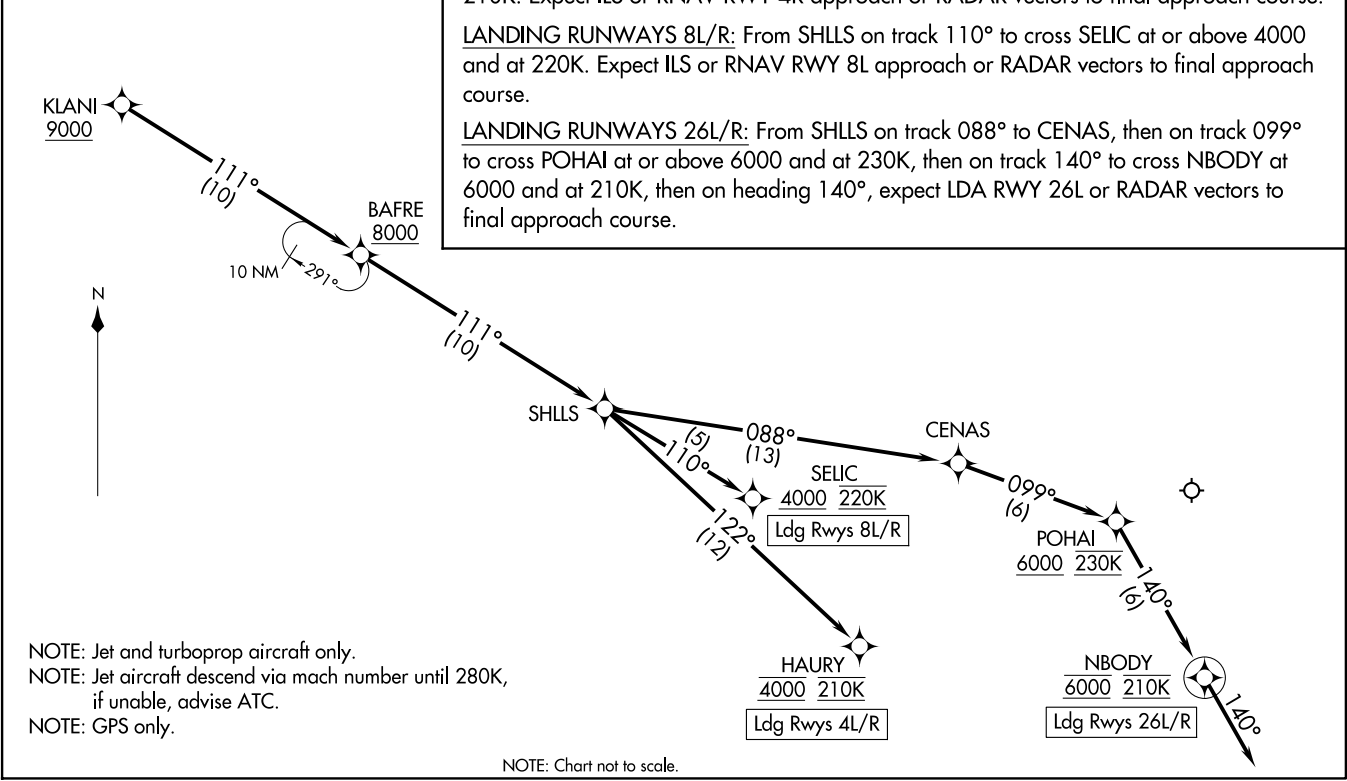
From KLANI on track 111° to cross BAFRE at or above 8000, then on track 111° to SHLLS.

LANDING RUNWAYS 4L/R: From SHLLS on track 122° to cross HAURY at 4000 and at 210K. Expect ILS or RNAV RWY 4R approach or RADAR vectors to final approach course.

LANDING RUNWAYS 8L/R: From SHLLS on track 110° to cross SELIC at or above 4000 and at 220K. Expect ILS or RNAV RWY 8L approach or RADAR vectors to final approach course.

LANDING RUNWAYS 26L/R: From SHLLS on track 088° to CENAS, then on track 099° to cross POHAI at or above 6000 and at 230K, then on heading 140°, expect LDA RWY 26L or RADAR vectors to final approach course.

(KLANI, KLANI4) 25051
AL-754 (FAA)
DANIEL K INOUYE INTL (HNL) (PHNL)
HONOLULU, HAWAII



NOTE: Jet and turboprop aircraft only.
NOTE: Jet aircraft descend via mach number until 280K, if unable, advise ATC.
NOTE: GPS only.

NOTE: Chart not to scale.