

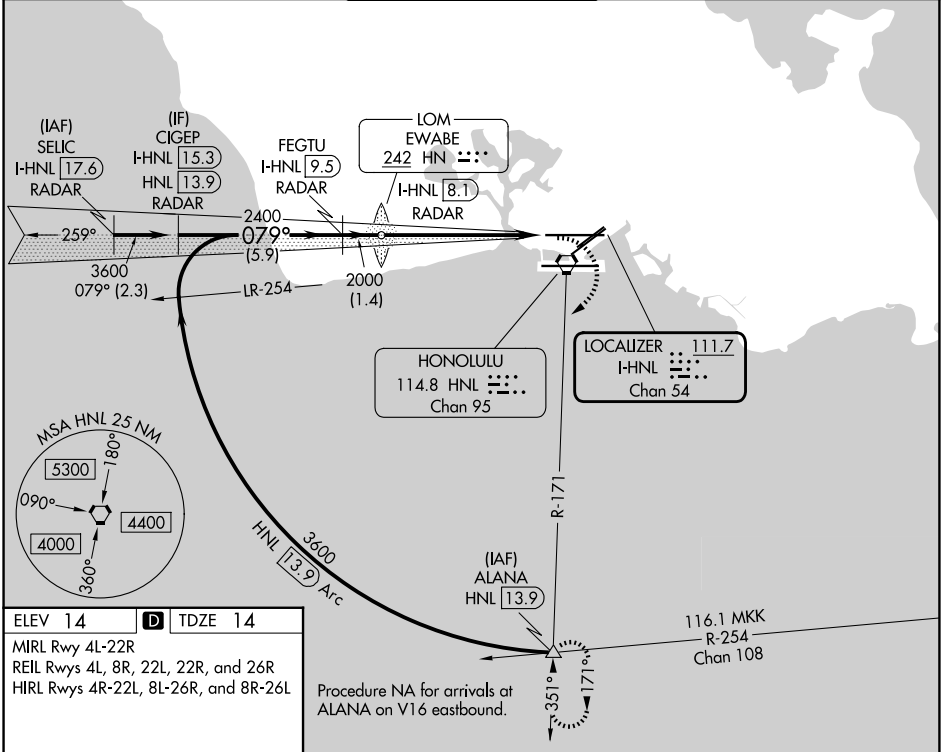
LOC/DME I-HNL <b>111.7</b> Chan 54	APP CRS <b>079°</b>	Rwy Ldg <b>12245</b> TDZE <b>14</b> Apt Elev <b>14</b>
--	------------------------	--

# LOC RWY 8L

DANIEL K INOUEY INTL (HNL) (PHNL)

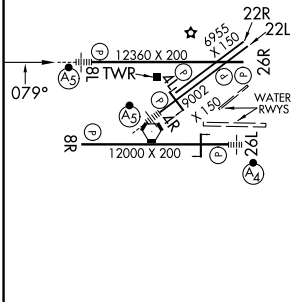
DME or RADAR required.	MALSR 	MISSED APPROACH: Climbing right turn to 5000 on heading 200° and HNL VORTAC R-171 to ALANA INT/HNL 13.9 DME and hold, continue climb-in-hold to 5000.
	Circling Rwy 22R NA at night. Circling NA for Cats A and B northwest of Rwys 8L and 22R and for Cats C and D north of Rwy 8L-26R. Circling NA to sea lanes 4W, 8W, 22W and 26W. For inop ALS, increase S-LOC 8L Cats C and D visibility to 1 3/8 SM.	

D-ATIS <b>127.9 251.15</b>	HCF APPROACH <b>118.3 269.0</b>	HONOLULU TOWER <b>118.1 257.8</b> <b>123.9 273.575</b> (8R/26L)	GND CON <b>121.9 348.6</b>	CLNC DEL <b>121.4 281.4</b>
-------------------------------	------------------------------------	---	-------------------------------	--------------------------------



ELEV 14	<b>D</b>	TDZE 14
MIRL Rwy 4L-22R		
REIL Rwys 4L, 8R, 22L, 22R, and 26R		
HIRL Rwys 4R-22L, 8L-26R, and 8R-26L		

Procedure NA for arrivals at ALANA on V16 eastbound.



CIGEP I-HNL 15.3 RADAR	VGSi and descent angles not coincident (VGSi Angle 3.00/TCH 73).		5000 hdg 200°	HNL R-171	ALANA
FEGTU I-HNL 9.5 RADAR		EWABE LOM I-HNL 8.1 RADAR			
3600	2400	2000	I-HNL 3.4	I-HNL 2.2	
	5.9 NM	1.4 NM	4.7 NM	1.2 NM	

FAF to MAP 5.9 NM					
Knots	60	90	120	150	180
Min:Sec	5:54	3:56	2:57	2:22	1:58

CATEGORY	A	B	C	D
S-8L	480-1/2	466 (500-1/2)	480-1	466 (500-1)
CIRCLING	680-1	666 (700-1)	820-2 1/4 806 (900-2 1/4)	1280-3 1266 (1300-3)

PAC. 14 MAY 2026 to 09 JUL 2026

PAC. 14 MAY 2026 to 09 JUL 2026