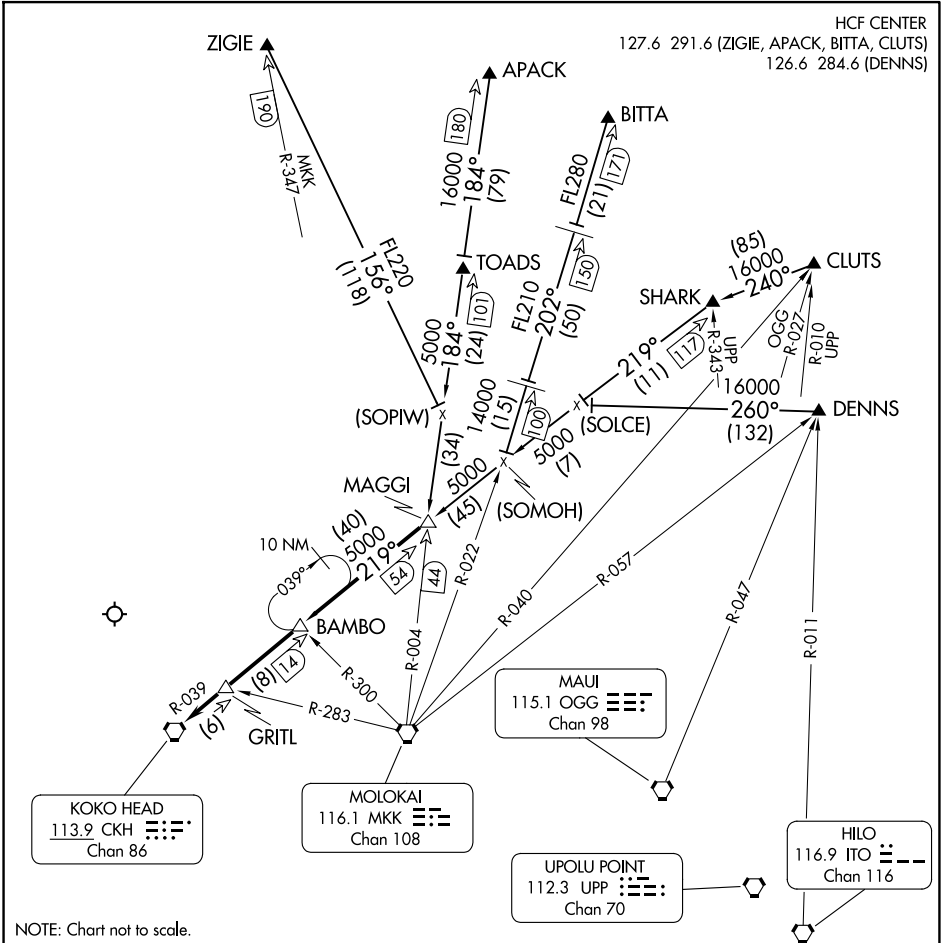


MAGGI THREE ARRIVAL

HCF CENTER

127.6 291.6 (ZIGIE, APACK, BITTA, CLUTS)

126.6 284.6 (DENNS)



PAC, 14 MAY 2026 to 09 JUL 2026

PAC, 14 MAY 2026 to 09 JUL 2026

NOTE: Chart not to scale.

ARRIVAL ROUTE DESCRIPTION

APACK TRANSITION (APACK.MAGGI3): From over APACK DME via MKK R-004 to MAGGI INT. Thence. . . .

BITTA TRANSITION (BITTA.MAGGI3): From over BITTA DME via MKK R-022 to intercept CKH R-039 to MAGGI INT. Thence. . . .

CLUTS TRANSITION (CLUTS.MAGGI3): From over CLUTS DME via heading 240° to intercept CKH R-039 to MAGGI INT. Thence. . . .

DENNS TRANSITION (DENNS.MAGGI3): From over DENNS INT via heading 260° to intercept CKH R-039 to MAGGI INT. Thence. . . .

ZIGIE TRANSITION (ZIGIE.MAGGI3): From over ZIGIE DME via heading 156° to intercept MKK R-004 to MAGGI INT. Thence. . . .

. . . .From over MAGGI INT via CKH R-039 to CKH VORTAC then RADAR vectors for approach to airport.

MAGGI THREE ARRIVAL