

APP CRS	Rwy Ldg	<b>12000</b>
<b>079°</b>	TDZE	<b>10</b>
	Apt Elev	<b>13</b>

# RNAV (GPS) RWY 8R

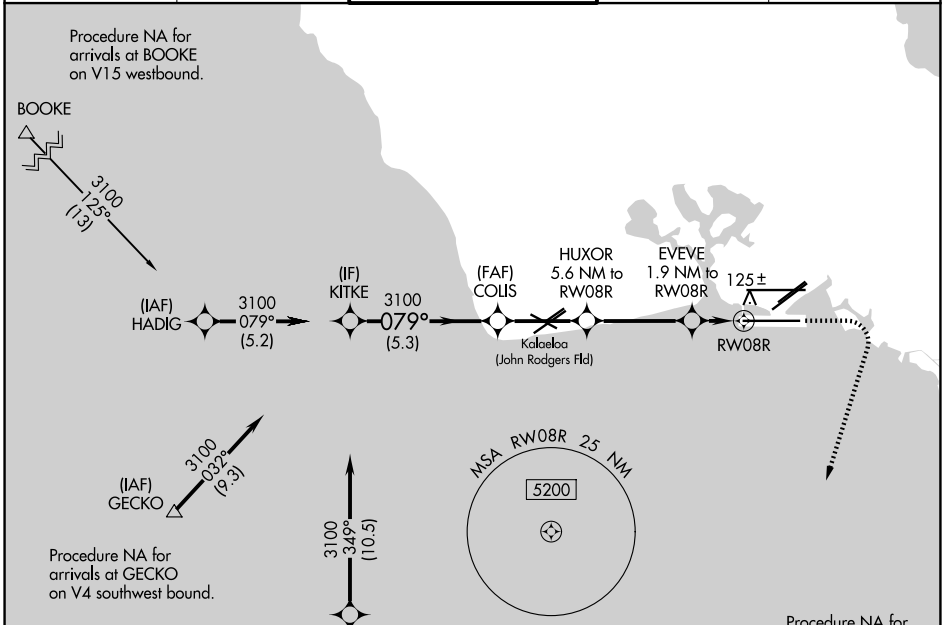
DANIEL K INOUEY INTL (HNL) (PHNL)

RNP APCH.

**▼** Circling Rwy 22R NA at night. Circling NA for Cats A and B northwest of Rwy 8L and 22R. Circling NA for Cats C, D, and E north of Rwy 8L-26R. Circling NA to Sea Lanes 4W, 8W, 22W, and 26W. Cat E restricted to USAF/USN Aircraft.

**MISSED APPROACH:** Climb to 500 then climbing right turn to 3100 direct ALANA and hold, continue climb-in-hold to 3100.

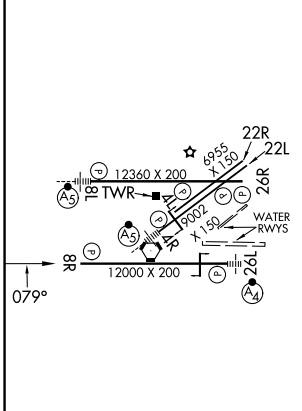
D-ATIS <b>127.9 251.15</b>	HCF APPROACH <b>118.3 269.0</b>	HONOLULU TOWER <b>118.1 257.8</b> <b>123.9 273.575 (8R/26L)</b>	GND CON <b>121.9 348.6</b>	CLNC DEL <b>121.4 281.4</b>
-------------------------------	------------------------------------	---	-------------------------------	--------------------------------



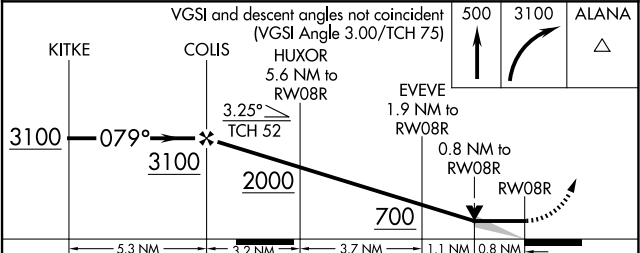
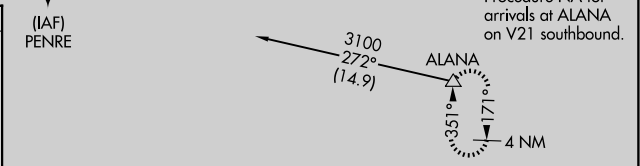
PAC, 14 MAY 2026 to 09 JUL 2026

PAC, 14 MAY 2026 to 09 JUL 2026

ELEV 13	<b>D</b>	TDZE 10
---------	----------	---------



MIRL Rwy 4L-22R  
REIL Rwy 4L, 8R, 22L, 22R, and 26R  
HIRL Rwy 4R-22L, 8L-26R, and 8R-26L



CATEGORY	A	B	C	D	E
LNAV MDA	360-1 350 (400-1)				
CIRCLING	680-1	760-1	820-2 <sup>1</sup> / <sub>4</sub>	1340-3	2020-3
	667 (700-1)	747 (800-1)	807 (900-2 <sup>1</sup> / <sub>4</sub> )	1327 (1400-3)	2007 (2100-3)