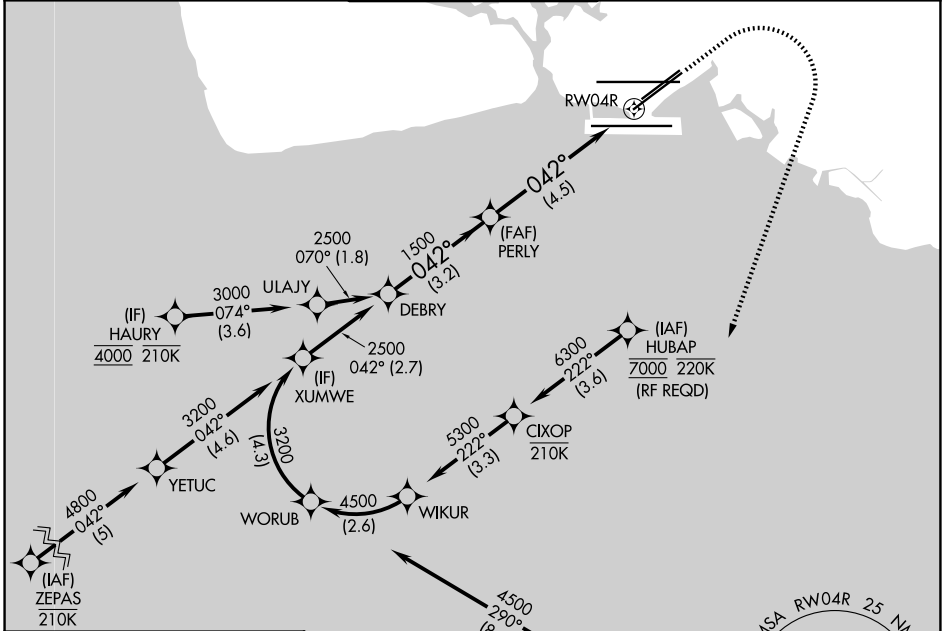


APP CRS	Rwy Ldg	<b>8950</b>
<b>042°</b>	TDZE	<b>9</b>
	Apt Elev	<b>13</b>

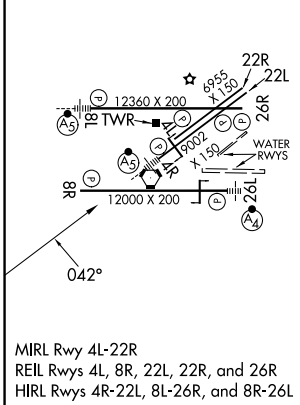
# RNAV (RNP) Z RWY 4R

DANIEL K INOUEY INTL (HNL) (PHNL)

RNP AR APCH.		MALSR	MISSED APPROACH: Climb to 580 then climbing right turn to 3000 direct ALANA and hold.	
<p>▼ For uncompensated Baro-VNAV systems, procedure NA below 17°C or above 54°C. For inop ALS, increase RNP 0.30 Cat A visibility to ¾ SM and Cat B to ½ SM.</p>				
D-ATIS	HCF APPROACH	HONOLULU TOWER	GND CON	CLNC DEL
<b>127.9 251.15</b>	<b>118.3 269.0</b>	<b>118.1 257.8</b> <b>123.9 273.575 (8R/26L)</b>	<b>121.9 348.6</b>	<b>121.4 281.4</b>

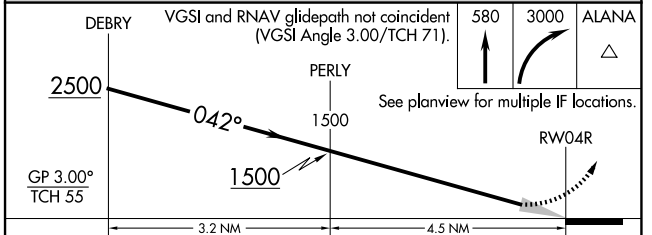


ELEV	<b>13</b>	<b>D</b>	TDZE	<b>9</b>
------	-----------	----------	------	----------



MIRL Rwy 4L-22R  
REIL Rwys 4L, 8R, 22L, 22R, and 26R  
HIRL Rwys 4R-22L, 8L-26R, and 8R-26L

Procedure NA for arrivals at ALANA on V8-21 southbound and on V16 southeast bound.



GP 3.00° TCH 55	-3.2 NM		-4.5 NM	
CATEGORY	A	B	C	D
RNP 0.30 DA	259-½ 250 (300-½)	277-½ 268 (300-½)	432-¾	423 (500-¾)

**AUTHORIZATION REQUIRED**