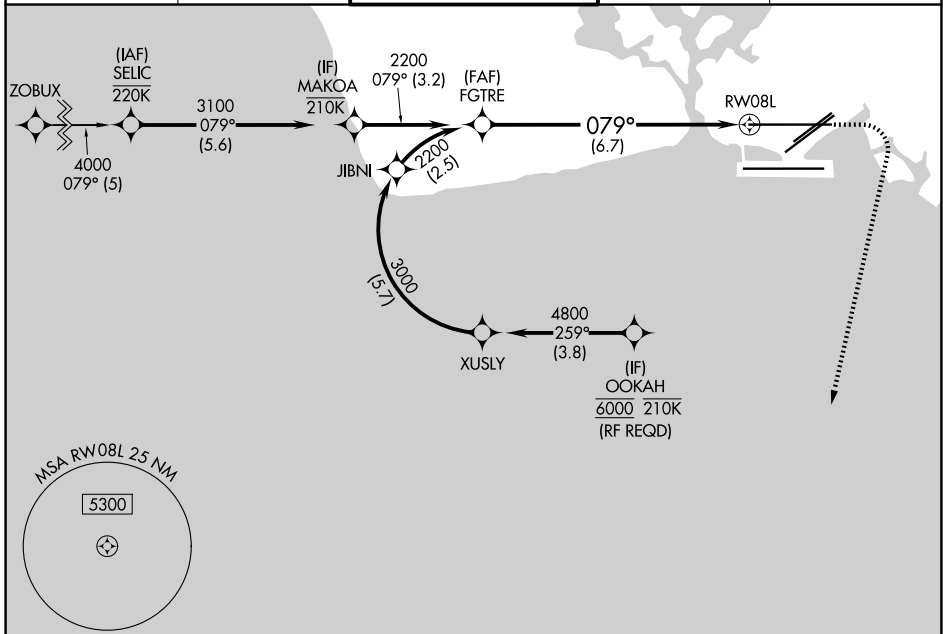


APP CRS <b>079°</b>	Rwy Ldg <b>12245</b> TDZE <b>13</b> Apt Elev <b>13</b>
------------------------	--

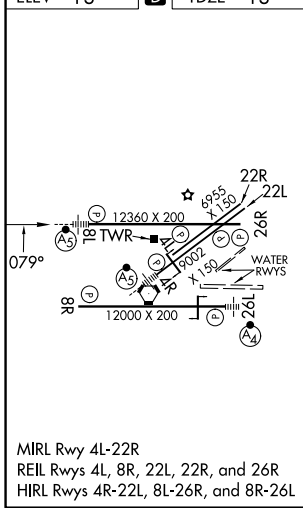
# RNAV (RNP) Z RWY 8L

DANIEL K INOUE INTL (HNL) (PHNL)

RNP AR APCH - GPS.		MALSR	MISSED APPROACH: Climb to 420 then climbing right turn to 3000 direct ALANA and hold.	
▼ For uncompensated Baro-VNAV systems, procedure NA below 17°C or above 54°C. For inop ALS, increase RNP 0.15 DA all Cats visibility to ½ SM.				
D-ATIS <b>127.9 251.15</b>	HCF APPROACH <b>118.3 269.0</b>	HONOLULU TOWER <b>118.1 257.8</b> <b>123.9 273.575 (8R/26L)</b>	GND CON <b>121.9 348.6</b>	CLNC DEL <b>121.4 281.4</b>



ELEV 13	<b>D</b>	TDZE 13
---------	----------	---------



VGSi and RNAV glidepath not coincident (VGSi Angle 3.00/TCH 73).		ALANA	420	3000	ALANA
GP 3.00° TCH 56		MAKOA	FGTR	RW08L	
See planview for multiple IF locations.		3.2 NM      6.7 NM			
CATEGORY	A	B	C	D	
RNP 0.15 DA		285-½	272 (300-½)		
RNP 0.30 DA		347-½	334 (400-½)		

**AUTHORIZATION REQUIRED**