

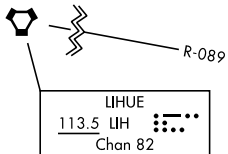
SAITO TWO DEPARTURE (SAITO2•SAITO)

AL-754 [USAF]

HONOLULU, HAWAII

DME required

D-ATIS
 127.9 251.15
 CLNC DEL
 121.4 281.4
 GND CON
 121.9 348.6
 HONOLULU TOWER
 118.1 257.8
 123.9 273.575
 (Rwy 8R - 26L)
 HCF APP
 118.3 317.6
 N119.1 265.0
 W118.3 269.0



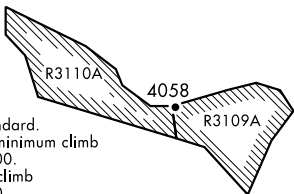
SAITO
 7000
 2

NOT FOR CIVIL USE

TOP ALTITUDE:
 7000

CAUTION: Large ships operating in channel waters surrounding HNL airport.

Terrain in heights to 2200 occur within 5 NM.



TAKEOFF MINIMUMS

Rwy 22L/R, 26L/R: Standard.
 Rwy 8L: Standard with minimum climb of 305 ft per NM to 1300.
 Rwy 8R: Standard with climb of 296 ft per NM to 500.

TAKEOFF OBSTACLES

Rwy 22L: Tree 582' from DER, 472' right of centerline, 31' MSL/23' AGL.
 Rwy 22R: Tower 1451' from DER, 827' right of centerline, 84' MSL/81' AGL.

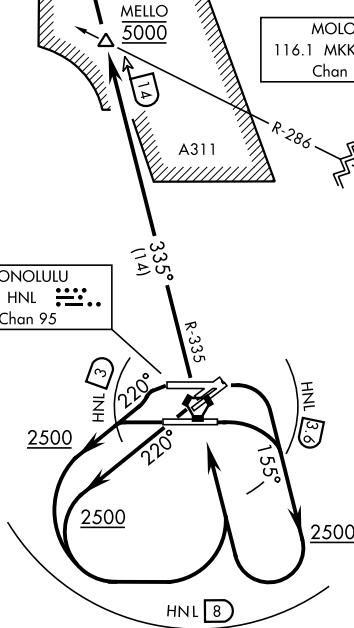
Departure from Rwy 8L/R:
 Right turn to heading 155° must be completed within 2 NM of departure end of rwy (HNL VORTAC 3.6 DME).
 Leaving 2500 and right turn to intercept HNL VORTAC R-335 must be completed within 8 DME.

Departure from Runways 22L/R:
 Leaving 2500 and left turn to intercept HNL VORTAC R-335 must be completed within 8 DME.

Departure from Rwy 26L/R:
 Left turn to heading 220° must be completed within 2 NM of departure end of rwy (HNL VORTAC 3 DME).
 Leaving 2500 and left turn to intercept HNL VORTAC R-335 must be completed within 8 DME.

HONOLULU
 114.8 HNL
 Chan 95

MOLOKAI
 116.1 MKK
 Chan 108



DEPARTURE ROUTE DESCRIPTION

TAKEOFF RUNWAYS 8L/R: Climbing right turn heading 155° to 2500, then climbing right turn to HNL VORTAC and on HNL R-335 to cross MELLO at 5000. Thence....

TAKEOFF RUNWAYS 22L/R: Climb heading 220° to 2500, then climbing left turn to HNL VORTAC and on HNL R-335 to cross MELLO at 5000. Thence....

TAKEOFF RUNWAYS 26L/R: Climbing left turn heading 220° to 2500, then climbing left turn to HNL VORTAC and on HNL R-335 to cross MELLO at 5000. Thence....

... continue on HNL R-335 to cross SAITO at 7000, expect clearance to enroute altitude at SAITO.

SAITO TWO DEPARTURE (SAITO2•SAITO)

HONOLULU, HAWAII

PAC. 14 MAY 2026 to 09 JUL 2026

PAC. 14 MAY 2026 to 09 JUL 2026