

# RNAV (GPS)-C

APCH CRS	Rwy Idg	N/A
352°	TDZE	N/A
	Arprt Elev	843

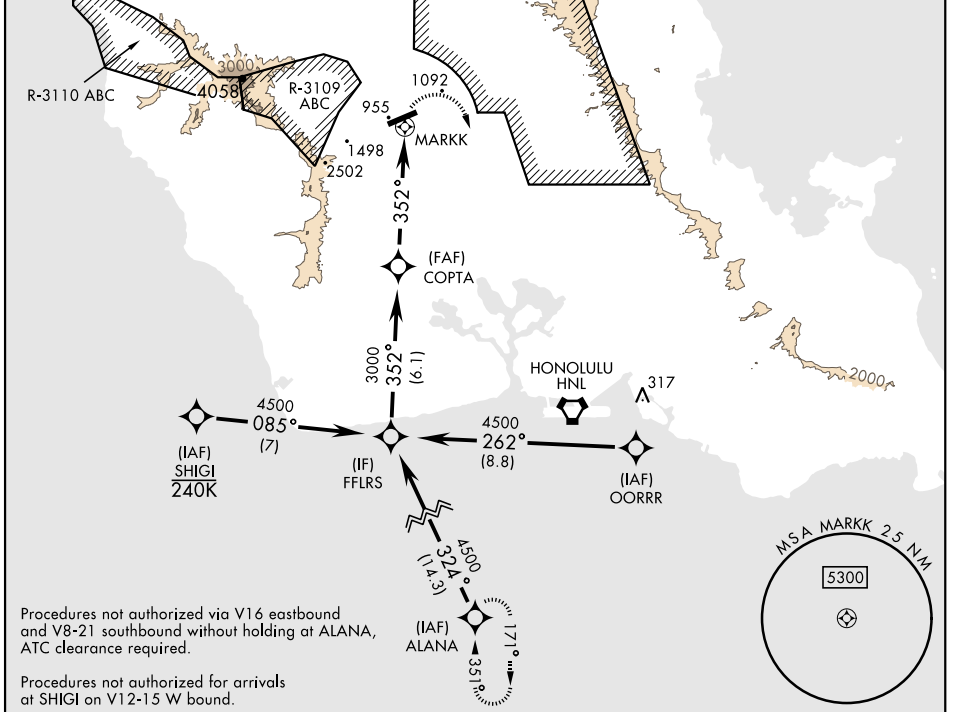
[USA]

WHEELER AAF (PHHI)

RNP APCH - GFS  
DME required  
\*Circling to Rwy 24 not authorized at night.  
Circling not authorized N Rwy 6-24 when class D surface area is VFR.

MISSED APPROACH: (Do not exceed 220 KIAS until initial turn completion.) Climbing right turn to 6000 direct HNL VORTAC, track 171° to ALANA and hold.

ATIS	HCF APP CON	TOWER ★	GND CON					
119.675 242.4	118.3 269.0	126.3 (CTAF) 235.625	41.5 FM	121.85	237.5			
		Knots	60	120	180	240	300	360
		V/V (fpm)	295	590	885	1180	1475	1770
		Min climb of 295 ft/NM to 3000 - Controlling Obstacle 1611						

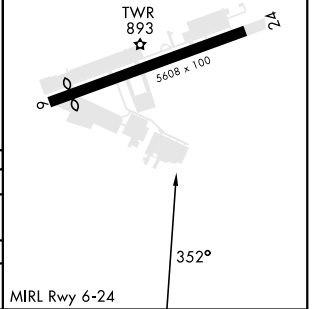
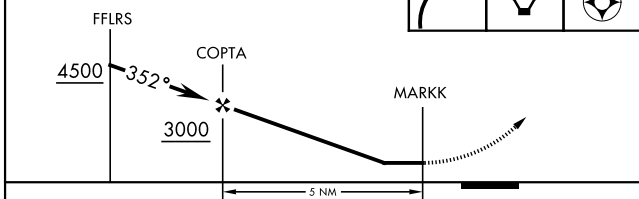


Procedures not authorized via V16 eastbound and V8-21 southbound without holding at ALANA, ATC clearance required.

Procedures not authorized for arrivals at SHIGI on V12-15 W bound.

When local altimeter not received use HNL INTL altimeter setting and minimums.

6000	HNL	ALANA	ELEV 843
			Rwy 6 Idg 5038'



CATEGORY	A	B	C	D
CIRCLING *	1400-1 557 (600-1)	1800-1½ 957 (1000-1½)	2820-3 1977 (2000-3)	NOT AUTHORIZED
DANIEL K. INOUEY INTL ALTIMETER MINIMUMS				
CIRCLING *	1560-1 717 (800-1)	1960-1½ 1117 (1200-1½)	2980-3 2137 (2200-3)	NOT AUTHORIZED

MRL Rwy 6-24

# RNAV (GPS)-C

PAC, 14 MAY 2026 to 09 JUL 2026

PAC, 14 MAY 2026 to 09 JUL 2026