

LOC/DME I-TO 110.7 Chan 44	APP CRS 259°	Rwy Ldg 9803 TDZE 38 Apt Elev 38
--	------------------------	---

ILS or LOC RWY 26

HILO INTL (ITO) (PHTO)

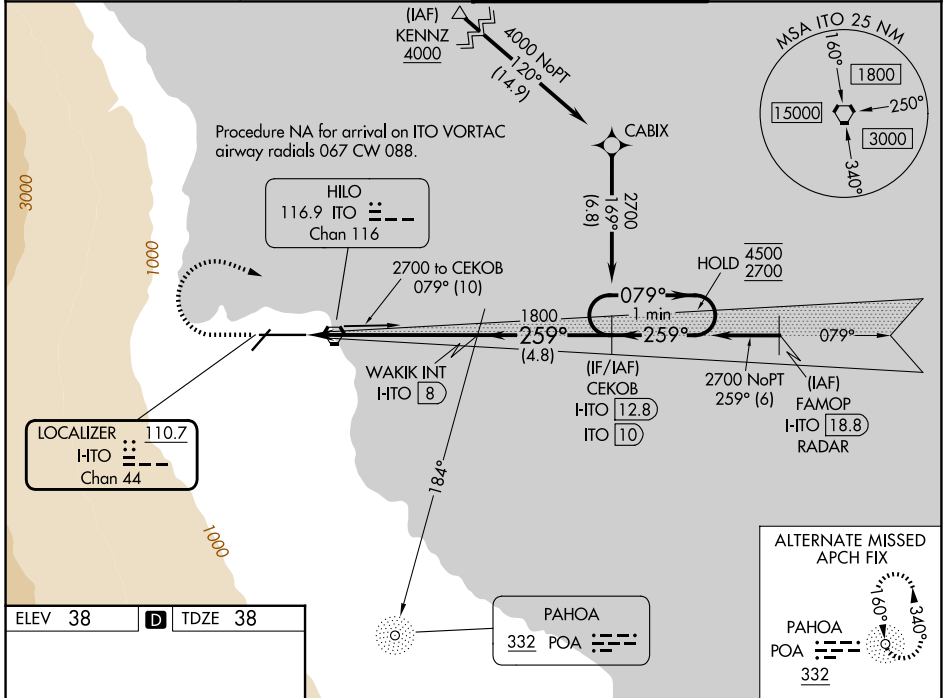
DME required. From KENNZ: RNAV 1-GPS required.

⚠ Circling NA south of Rwy 8-26. Rwy 26 helicopter visibility reduction below 3/4 SM NA. Inop table does not apply to S-ILS 26 all Cats. For inop ALS, increase S-LOC 26 Cat A/B visibility to 1 SM, and Cat C/D to 1 1/2 SM.

MALSR

MISSED APPROACH: Climb to 500 then climbing right turn to 3300 on heading 100° and on ITO VORTAC R-079 to CEKOB/ITO VORTAC 10 DME and hold, continue climb-in-hold to 3300.

ATIS 126.4	HILO APP CON* 119.7 269.2	HILO TOWER* 118.1(CTAF) 263.1	GND CON 121.9
----------------------	-------------------------------------	---	-------------------------



ELEV 38	D	TDZE 38
---------	----------	---------

