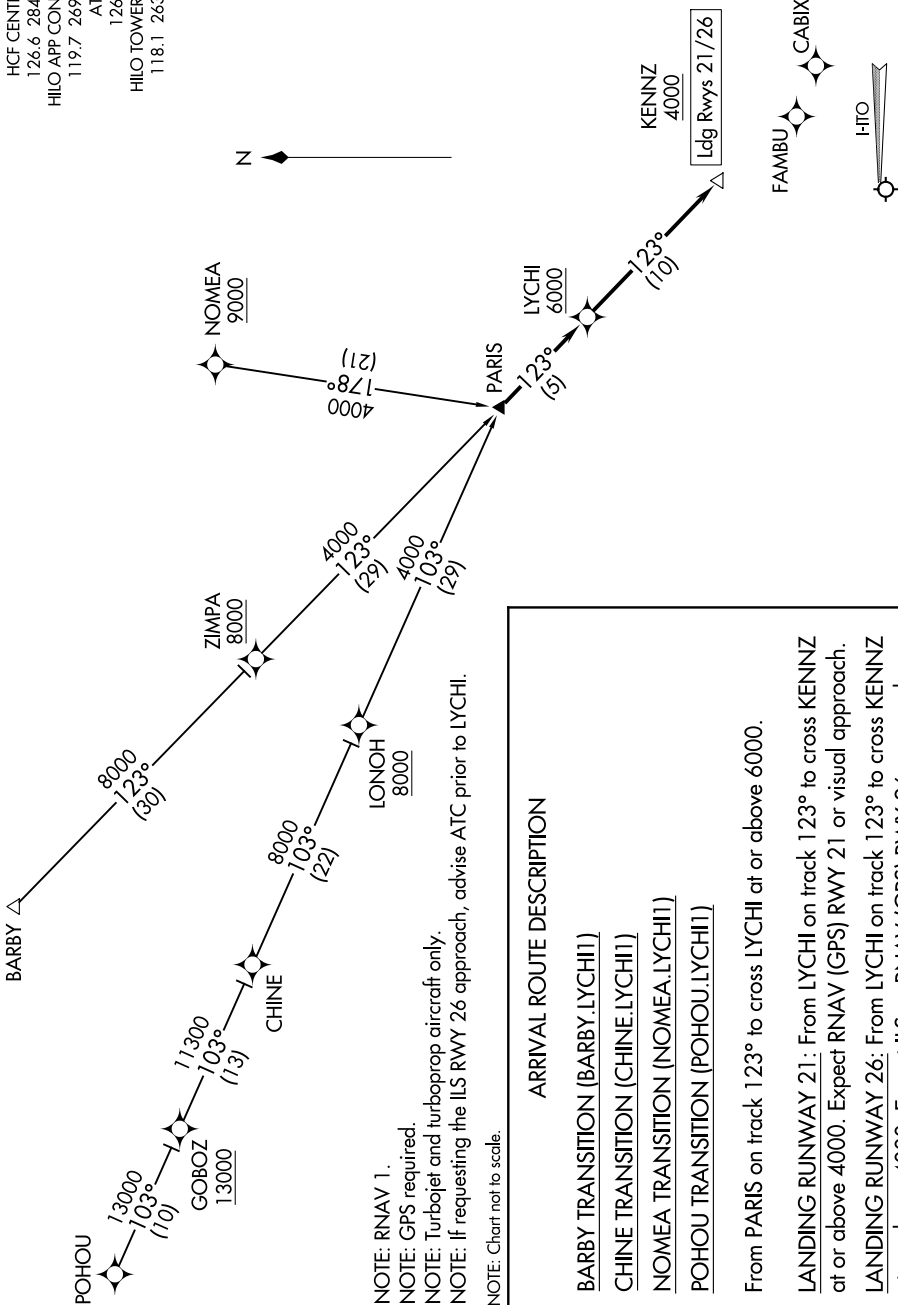


LYCHI ONE ARRIVAL (RNAV)

AL-756 (FAA)

HILO INTL (ITO)(PHTO)
HILO, HAWAII

HCF CENTER
126.6 284.6
HILO APP CON ★
119.7 269.2
ATIS
126.4
HILO TOWER ★
118.1 263.1



NOTE: RNAV 1.
 NOTE: GPS required.
 NOTE: Turbojet and turboprop aircraft only.
 NOTE: If requesting the ILS RWY 26 approach, advise ATC prior to LYCHI.
 NOTE: Chart not to scale.

ARRIVAL ROUTE DESCRIPTION

BARBY TRANSITION (BARBY.LYCHI1)
CHINE TRANSITION (CHINE.LYCHI1)
NOMEA TRANSITION (NOMEA.LYCHI1)
POHOU TRANSITION (POHOU.LYCHI1)

From PARIS on track 123° to cross LYCHI at or above 6000.

LANDING RUNWAY 21: From LYCHI on track 123° to cross KENZ at or above 4000. Expect RNAV (GPS) RWY 21 or visual approach.

LANDING RUNWAY 26: From LYCHI on track 123° to cross KENZ at or above 4000. Expect ILS or RNAV (GPS) RWY 26 approach.

PAC, 14 MAY 2026 to 09 JUL 2026

PAC, 14 MAY 2026 to 09 JUL 2026

LYCHI ONE ARRIVAL (RNAV)