

APP CRS	Rwy Ldg	9803
259°	TDZE	38
	Apt Elev	38


RNAV (GPS) RWY 26

HILO INTL (ITO) (PHTO)

RNP APCH.

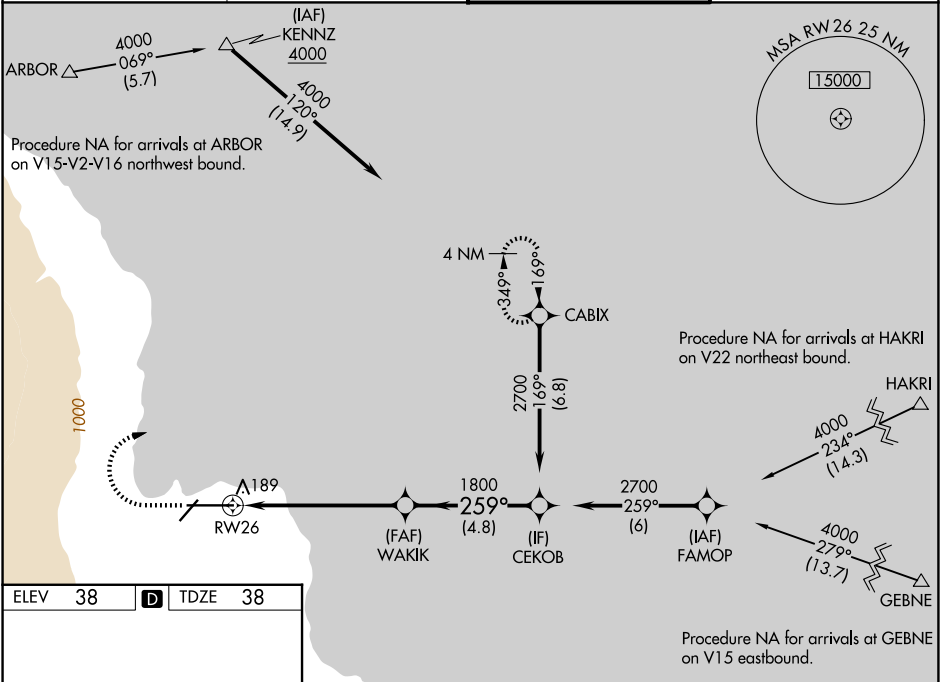
⚠ Circling NA south of Rwy 8-26. Rwy 26 helicopter visibility reduction below 3/4 SM NA. WAAS VNAV NA. For uncompensated Baro-VNAV systems, LNAV/VNAV NA below 15°C or above 54°C. For inop ALS, increase LNAV/VNAV all Cats visibility to 3/8 SM and increase LNAV Cat A/B visibility to 1 SM.

MALSR

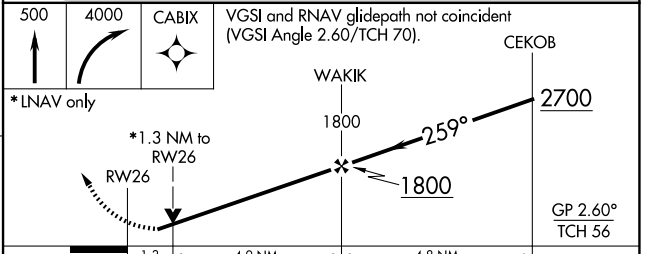
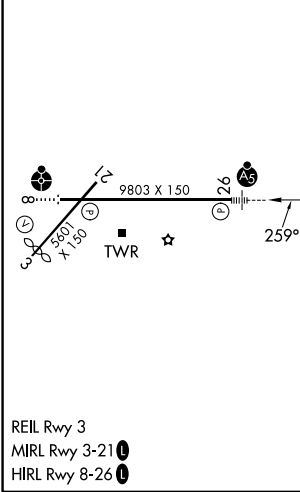


MISSED APPROACH: Climb to 500 then climbing right turn to 4000 direct CABIX and hold, continue climb-in-hold to 4000.

ATIS 126.4	HILO APP CON* 119.7 269.2	HILO TOWER* 118.1(CTAF) 263.1	GND CON 121.9
----------------------	-------------------------------------	---	-------------------------



ELEV 38	D	TDZE 38
---------	----------	---------



	1.3	4.9 NM	4.8 NM	
CATEGORY	A	B	C	D
LNAV/VNAV DA		350-3/4	312 (400-3/4)	
LNAV MDA		460-3/4	422 (500-3/4)	
CIRCLING	500-1	540-1	840-2 1/4	1320-3
	462 (500-1)	502 (600-1)	802 (900-2 1/4)	1282 (1300-3)

PAC: 14 MAY 2026 to 09 JUL 2026

PAC: 14 MAY 2026 to 09 JUL 2026