

VORTAC HNL 114.8 Chan 95	APP CRS 074°	Rwy Ldg 7989 TDZE 17 Apt Elev 32
--	------------------------	---

VOR RWY 4R

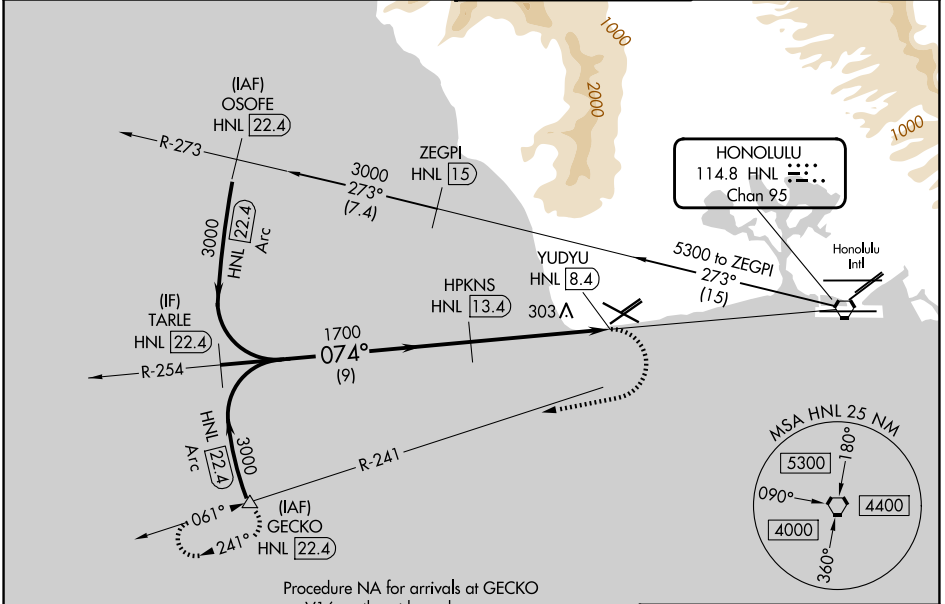
KALAELOA (JOHN RODGERS FLD) (JRF)(PHJR)

DME required.

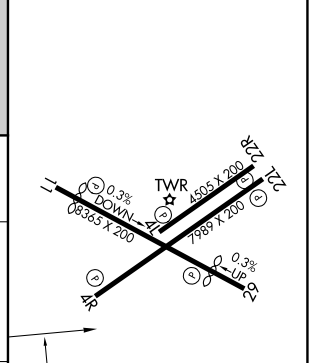
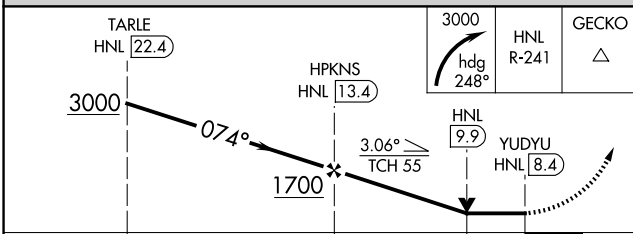
⚠ Circling NA north of Rwy 4R-22L. Rwy 4R helicopter visibility reduction below 3/4 SM NA. VDP NA when using HNL/PHNL altimeter setting. When local altimeter not received, use HNL/PHNL altimeter setting and increase all MDAs 40 feet and S-4R visibility Cat C/D 1/2 SM, and Circling visibility Cat C 1/2 SM.

MISSED APPROACH: Climbing right turn to 3000 on heading 248° and HNL VORTAC R-241 to GECKO/HNL 22.4 DME and hold.

ATIS 119.8	HCF APP CON 118.3 269.0	KALAELOA TOWER ★ 132.6 (CTAF) 340.2	GND CON 123.8 336.4
----------------------	-----------------------------------	---	-------------------------------



ELEV 32	TDZE 17
---------	---------



MIRL Rwy 4L-22R, 4R-22L and 11-29