

BEACH FOUR DEPARTURE

AL-762 (FAA)

KAHULUI (OGG)(PHOG)
KAHULUI, HAWAII

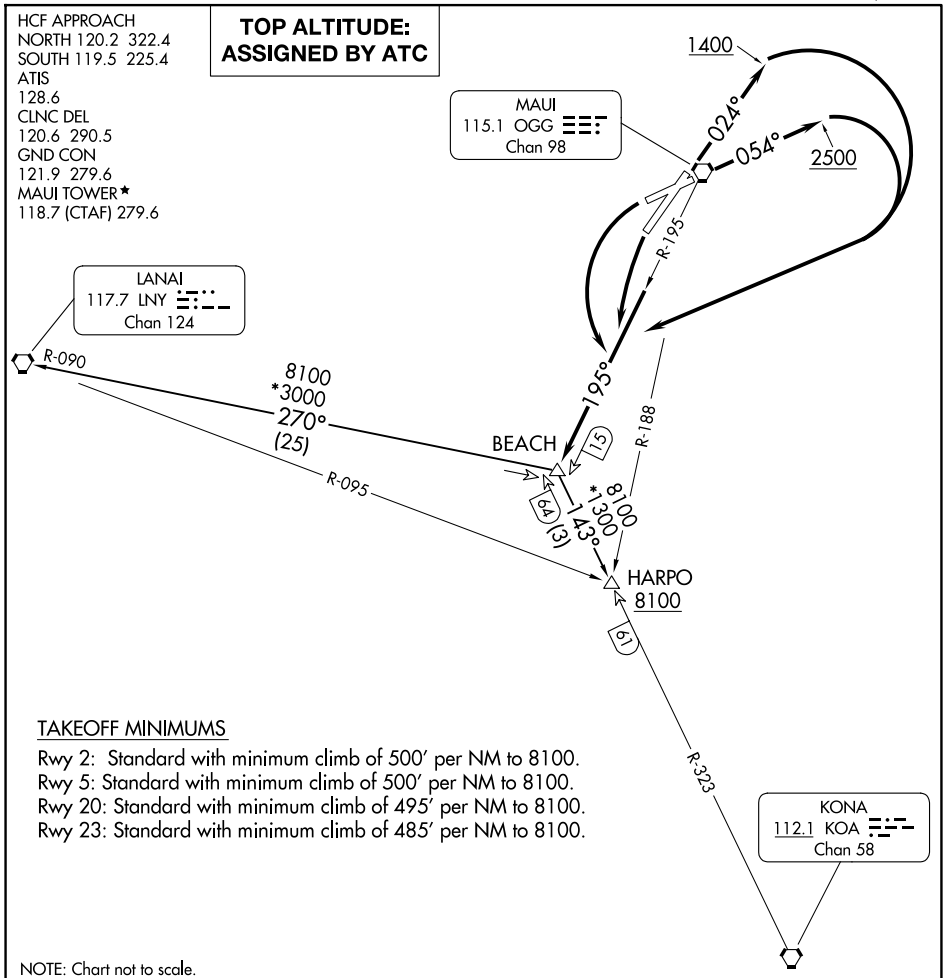
HCF APPROACH
 NORTH 120.2 322.4
 SOUTH 119.5 225.4
 ATIS
 128.6
 CLNC DEL
 120.6 290.5
 GND CON
 121.9 279.6
 MAUI TOWER*
 118.7 (CTAF) 279.6

**TOP ALTITUDE:
 ASSIGNED BY ATC**

MAUI
 115.1 OGG
 Chan 98

LANAI
 117.7 LNY
 Chan 124

KONA
 112.1 KOA
 Chan 58



TAKEOFF MINIMUMS

- Rwy 2: Standard with minimum climb of 500' per NM to 8100.
- Rwy 5: Standard with minimum climb of 500' per NM to 8100.
- Rwy 20: Standard with minimum climb of 495' per NM to 8100.
- Rwy 23: Standard with minimum climb of 485' per NM to 8100.

NOTE: Chart not to scale.



DEPARTURE ROUTE DESCRIPTION

- TAKEOFF RUNWAY 2: Climb on heading 024° to 1400 then climbing right turn via OGG R-195 to BEACH INT.
- TAKEOFF RUNWAY 5: Climb on heading 054° to 2500 then climbing right turn via OGG R-195 to BEACH INT.
- TAKEOFF RUNWAYS 20, 23: Climbing left turn via OGG R-195 to BEACH INT.

HARPO TRANSITION (BEACH4.HARPO): From over BEACH INT on KOA R-323 to HARPO INT.

LANAI TRANSITION (BEACH4.LNY): From over BEACH INT on LNY R-090 to LNY VORTAC.

BEACH FOUR DEPARTURE

(BEACH4.BEACH) 20AUG15

KAHULUI, HAWAII
KAHULUI (OGG)(PHOG)

PAC, 14 MAY 2026 to 09 JUL 2026

PAC, 14 MAY 2026 to 09 JUL 2026