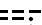




HCF CENTER
119.5 225.4
ATIS
128.6
MAUI TOWER*
118.7 279.6

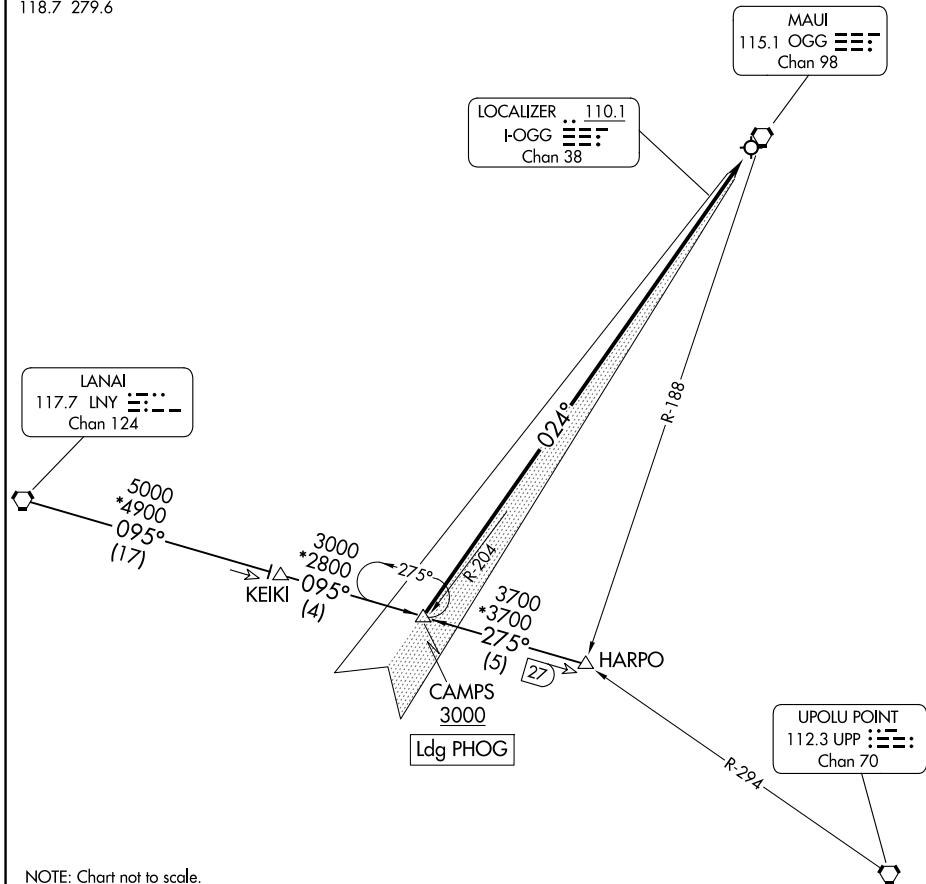
RADAR required to HARPO.
DME required for LANAI Transition.

MAUI
115.1 OGG 
Chan 98

LOCALIZER .. 110.1
I-OGG 
Chan 38

LANAI
117.7 LNY 
Chan 124

UPOLU POINT
112.3 UPP 
Chan 70



NOTE: Chart not to scale.

ARRIVAL ROUTE DESCRIPTION

HARPO TRANSITION (HARPO.CAMPS4): From over HARPO on LNY R-095 to CAMPS.
Thence

LANAI TRANSITION (LNY.CAMPS4): From over LNY VORTAC on LNY R-095 to CAMPS.
Thence

. . . . cross CAMPS at or above 3000, then on I-OGG localizer course. Expect
ILS Y or LOC Y RWY 2 approach.