

# HIAKA ONE DEPARTURE (RNAV)

AL-762 (FAA)

PAC, 14 MAY 2026 to 09 JUL 2026

**TOP ALTITUDE:**  
16000

NOTE: RNAV 1.  
NOTE: RADAR required.

NOTE: GPS required.

NOTE: Turbopjet and turboprop aircraft only.

NOTE: APACK departures expect direct/vectors to APACK/R463.

NOTE: CANON departures expect direct/vectors to CANON.

NOTE: CARRP departures expect direct/vectors to CARRP/A579.

NOTE: CHOKO departures expect direct/vectors to CHOKO.

NOTE: CLUTS departures expect direct/vectors to CLUTS/R465.

NOTE: DAINNO departures expect direct/vectors to DAINNO.

NOTE: DOVRR departures expect direct/vectors to DOVRR/B596.

NOTE: EBBER departures expect direct/vectors to EBBER/R577.

NOTE: JULLE departures expect direct/vectors to JULLE.

NOTE: KOA departures expect direct/vectors to KOA VORTAC.

NOTE: LILIA departures expect direct/vectors to LILIA.

NOTE: NONNI departures expect direct/vectors to NONNI.

NOTE: PUPPI departures expect direct/vectors to PUPPI.

NOTE: SAKKI departures expect direct/vectors to SAKKI.

NOTE: SCOON departures expect direct/vectors to SCOON.

THOMA

DAINNO

▲ CANON

▲ LILIA

▲ SYVAD △ PUPPI

NONNI ▲

◆ CHOKO

JULLE △ SAKKI

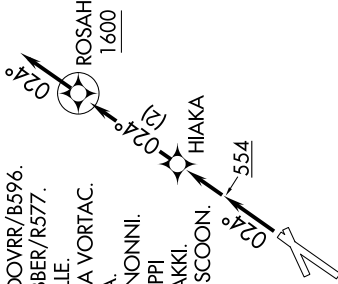
▲ ZIGIE

▲ APACK

▲ CLUTS

EBBER ▲

ATS  
128.6  
CLINC DEL  
120.6, 290.5  
GND CON  
121.9, 279.6  
MAJITOWER\*  
118.7, 279.6  
HCF APPROACH  
NORTH 120.2, 322.4  
SOUTH 119.5, 225.4



SCOON ▲

UPPU POINT  
UPP

◆ KONA  
KOA

▲ CARRP

▲ DOVRR

◆ TARDE

## ▼ DEPARTURE ROUTE DESCRIPTION

**TAKEOFF RUNWAY 2:** Climb heading 024° to 554, then direct HIAKA, thence. . . .  
... on track 024° to cross ROSAH at or above 1600, then on track 024° for RADAR vectors to assigned route/fix, maintain 16000 or as assigned by ATC. Expect clearance to filed altitude/flight level within 10 minutes after departure.

## TAKEOFF MINIMUMS

Rwy 2: Standard with minimum climb of 500' per NM to 554.

Rwys 5, 20, 23: NA - ATC.

NOTE: Chart not to scale.

# HIAKA ONE DEPARTURE (RNAV)

PAC, 14 MAY 2026 to 09 JUL 2026