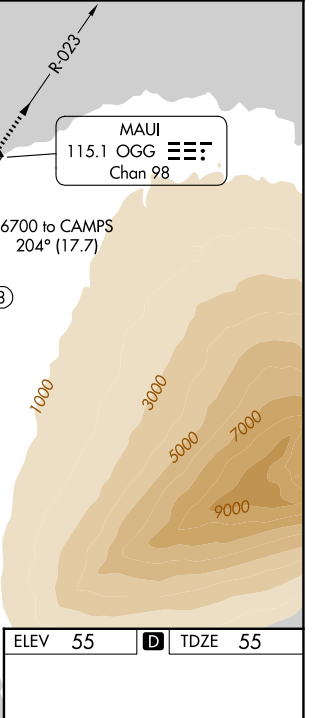
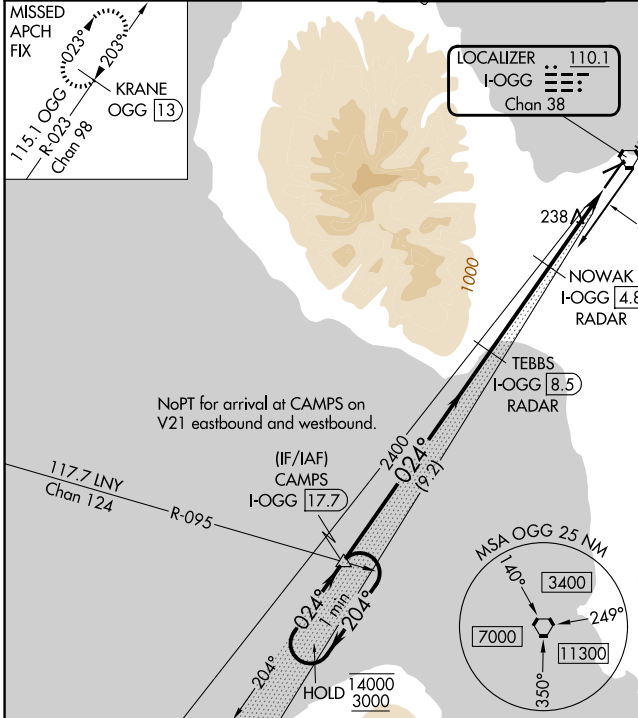


LOC/DME I-OGG 110.1 Chan 38	APP CRS 024°	Rwy Ldg TDZE Apt Elev 6995 55 55
---	------------------------	--

ILS Y or LOC Y RWY 2

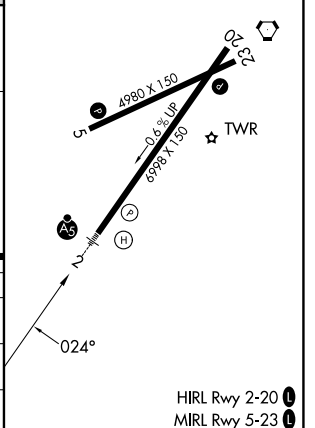
KAHALUI (OGG)(PHOG)

DME required. ▼ For inop ALS, increase S-ILS 2 Cat E visibility to 3/4 SM, and S-LOC 2 Cats C/D/E visibility to 1 1/8 SM.		MALSR 	MISSED APPROACH: Climb to 3000 on OGG VORTAC R-023 to KRANE/OGG 13 DME and hold.	
ATIS 128.6	HCF APPROACH 120.2 322.4 (N) 119.5 225.4 (S)	MAUI TOWER★ 118.7 (CTAF) 0 279.6	GND CON 121.9 279.6	UNICOM 122.95



Use I-OGG DME when on the localizer course. VGSI and ILS glidepath not coincident (VGSI Angle 3.00/TCH 77).

One Minute Holding Pattern	CAMPS I-OGG 17.7	TEBBS I-OGG 8.5	NOWAK I-OGG 4.8	I-OGG 2.5	I-OGG 1.3	KRANE OGG 13
1400 ← 204°	3000 → 024°	2400	2400	1220		
GS 3.00°	TCH 62					



CATEGORY	A	B	C	D	E
S-ILS 2	275-1/2 220 (300-1/2)				
S-LOC 2	520-1/2	465 (500-1/2)	520-1	465 (500-1)	
CIRCLING	520-1 465 (500-1)	620-1 565 (600-1)	800-2 1/4 745 (800-2/4)	1160-3 1105 (1200-3)	1720-3 1665 (1700-3)