

LOC/DME I-OGG <b>110.1</b> Chan 38	APP CRS <b>024°</b>	Rwy Ldg TDZE Apt Elev	<b>6995</b> <b>55</b> <b>55</b>
--	------------------------	-----------------------------	---------------------------------------

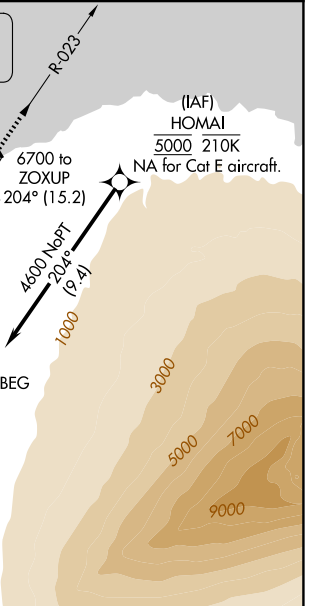
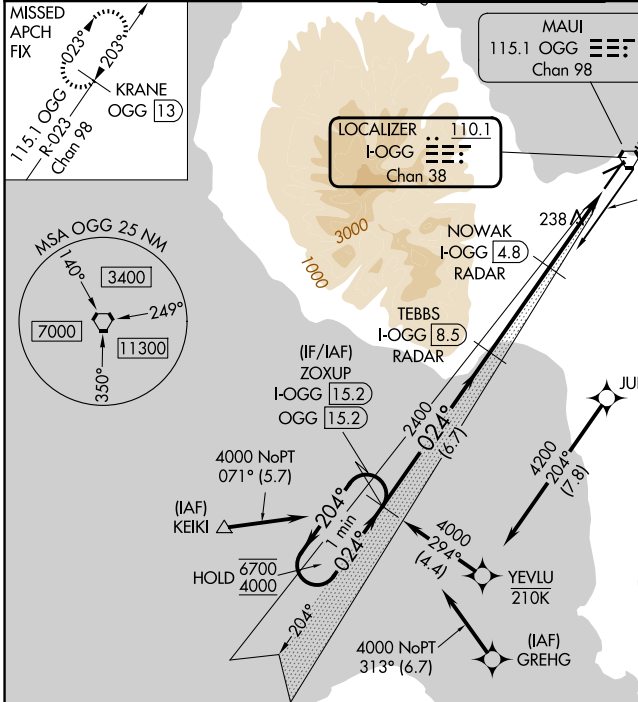
# ILS Z or LOC Z RWY 2

KAHULUI (OGG)(PHOG)

RNP APCH - GPS. From HOMAI or KEIKI or GREHG.  
DME required.  
For inop ALS, increase S-ILS 2 Cat E visibility to 3/4 SM, and S-LOC 2 Cats C/D/E visibility to 1 3/8 SM.

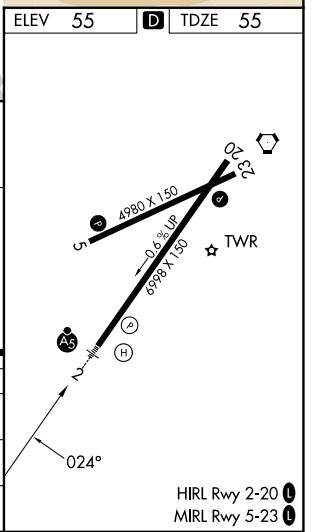
MALS R  
MISSED APPROACH: Climb to 3000 on OGG VORTAC R-023 to KRANE/OGG 13 DME and hold.

ATIS <b>128.6</b>	HCF APPROACH <b>120.2 322.4 (N)</b> <b>119.5 225.4 (S)</b>	MAUI TOWER ★ <b>118.7 (CTAF) 0 279.6</b>	GND CON <b>121.9 279.6</b>	UNICOM <b>122.95</b>
----------------------	--	---	-------------------------------	-------------------------



Use I-OGG DME when on the localizer course. VGSI and ILS glidepath not coincident (VGSI Angle 3.00/TCH 77).

One Minute Holding Pattern	ZOXUP I-OGG 15.2 OGG 15.2	TEBBS I-OGG 8.5 RADAR	3000 OGG R-023	KRANE OGG 13
6700 ← 204° 4000 → 024°	2400	NOWAK I-OGG 4.8 RADAR	I-OGG 2.5	I-OGG 1.3
GS 3.00° TCH 62	6.7 NM	3.7 NM	2.3 NM	1.2



CATEGORY	A	B	C	D	E
S-ILS 2	275-1/2 220 (300-1/2)				
S-LOC 2	520-1/2	465 (500-1/2)	520-1	465 (500-1)	
CIRCLING	520-1 465 (500-1)	620-1 565 (600-1)	800-2 1/4 745 (800-2 1/4)	1160-3 1105 (1200-3)	1720-3 1665 (1700-3)

PAC, 14 MAY 2026 to 09 JUL 2026

PAC, 14 MAY 2026 to 09 JUL 2026

HIRL Rwy 2-20  
MIRL Rwy 5-23