

APP CRS	Rwy Ldg	<b>6995</b>
<b>204°</b>	TDZE	<b>25</b>
	Apt Elev	<b>53</b>

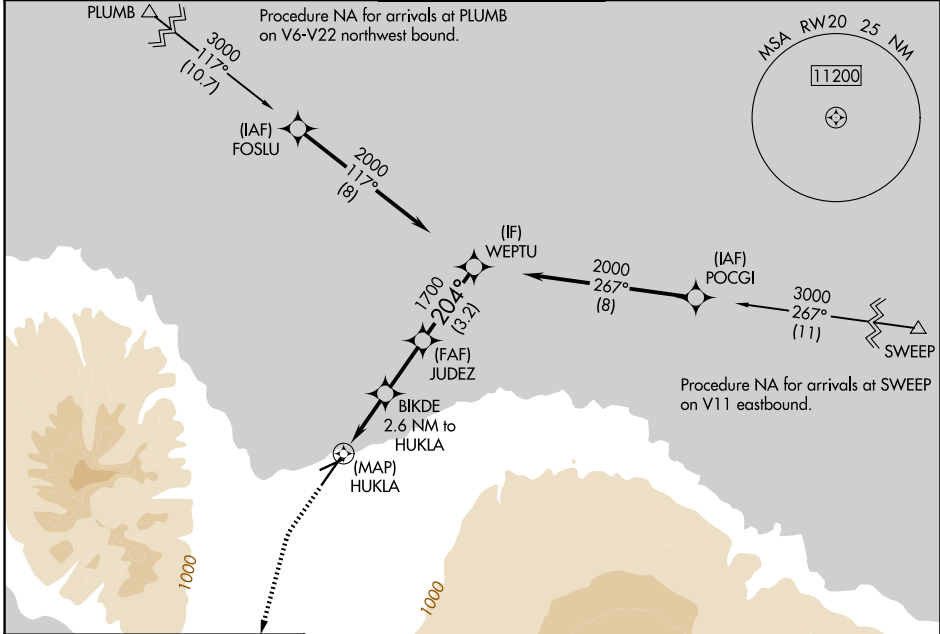
# RNAV (GPS) RWY 20

KAHALUI (OGG)(PHOG)

RNP APCH.  
 When local altimeter setting not received, procedure NA.

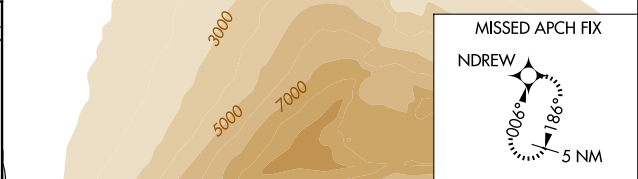
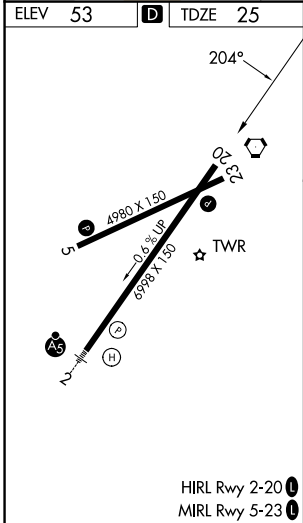
MISSED APPROACH: Climb to 500 then climbing left turn to 4300 direct NDREW and hold.

ATIS <b>128.6</b>	HCF APPROACH <b>120.2 322.4 (N)</b> <b>119.5 225.4 (S)</b>	MAUI TOWER * <b>118.7 (CTAF) 0 279.6</b>	GND CON <b>121.9 279.6</b>	UNICOM <b>122.95</b>
----------------------	--	---	-------------------------------	-------------------------



PAC, 14 MAY 2026 to 09 JUL 2026

PAC, 14 MAY 2026 to 09 JUL 2026



500	4300	NDREW	VGSi and descent angles not coincident (VGSi Angle 3.00/TCH 76)		WEPTU	
		0.8 NM to HUKLA	BIKDE 2.6 NM to HUKLA	JUDEZ	WEPTU	
		HUKLA	940	1700	2000	
		0.2	0.8	1.8 NM	2.3 NM	3.2 NM
CATEGORY	A		B		C	D
LNAV MDA	400-1 375 (400-1)					
CIRCLING	500-1 447 (500-1)	620-1 567 (600-1)	740-2 687 (700-2)	1140-3 1087 (1100-3)		