

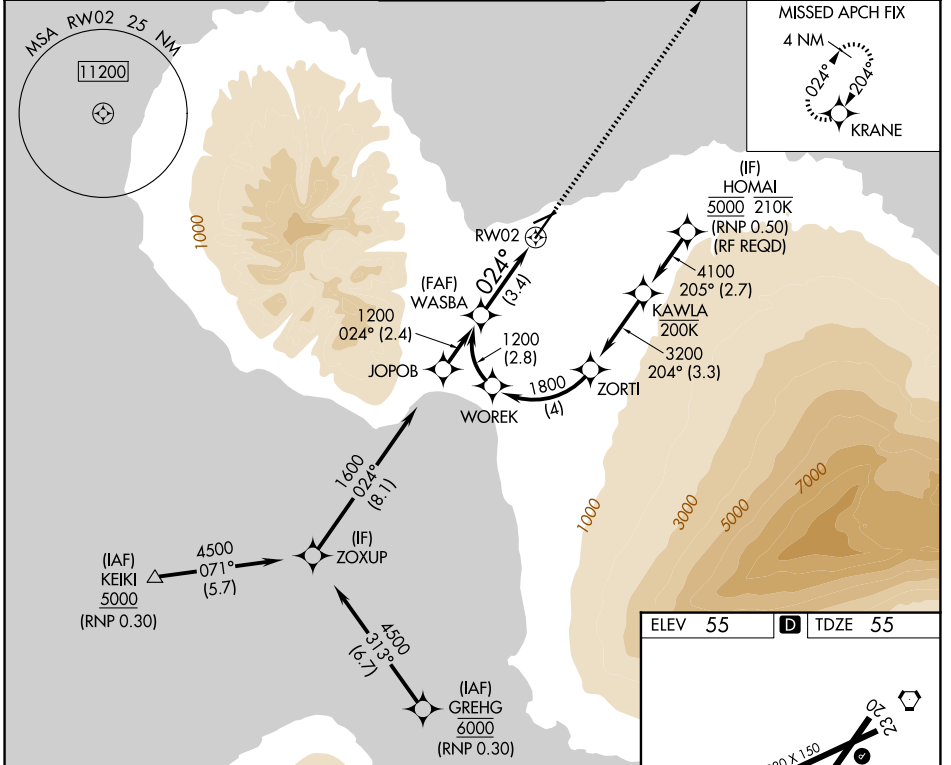
APP CRS	Rwy Ldg	<b>6995</b>
<b>024°</b>	TDZE	<b>55</b>
	Apt Elev	<b>55</b>

# RNAV (RNP) Z RWY 2

KAHULUI (OGG)(PHOG)

RNP AR APCH - GPS.	MALSR	MISSED APPROACH: Climb to 3000 direct KRANE and hold.
<p>▼ For uncompensated Baro-VNAV systems, procedure NA below 14°C or above 54° C. When local altimeter setting not received, procedure NA. For inop ALS, increase RNP 0.30 all Cats visibility to 7/8 SM.</p>		

ATIS <b>128.6</b>	HCF APPROACH <b>120.2 322.4 (N)</b> <b>119.5 225.4 (S)</b>	MAUI TOWER* <b>118.7 (CTAF) 0 279.6</b>	GND CON <b>121.9 279.6</b>	UNICOM <b>122.95</b>
----------------------	--	--	-------------------------------	-------------------------



WASBA	VGSi and RNAV glidepath not coincident (VGSi Angle 3.00/TCH 77).		3000	KRANE
1200	See planview for multiple IF locations.		↑	✧
GP 3.00°	024°		RW02	
TCH 62	3.4 NM			
CATEGORY	A	B	C	D
RNP 0.30 DA	394-1/2		339 (400-1/2)	
<b>AUTHORIZATION REQUIRED</b>				

