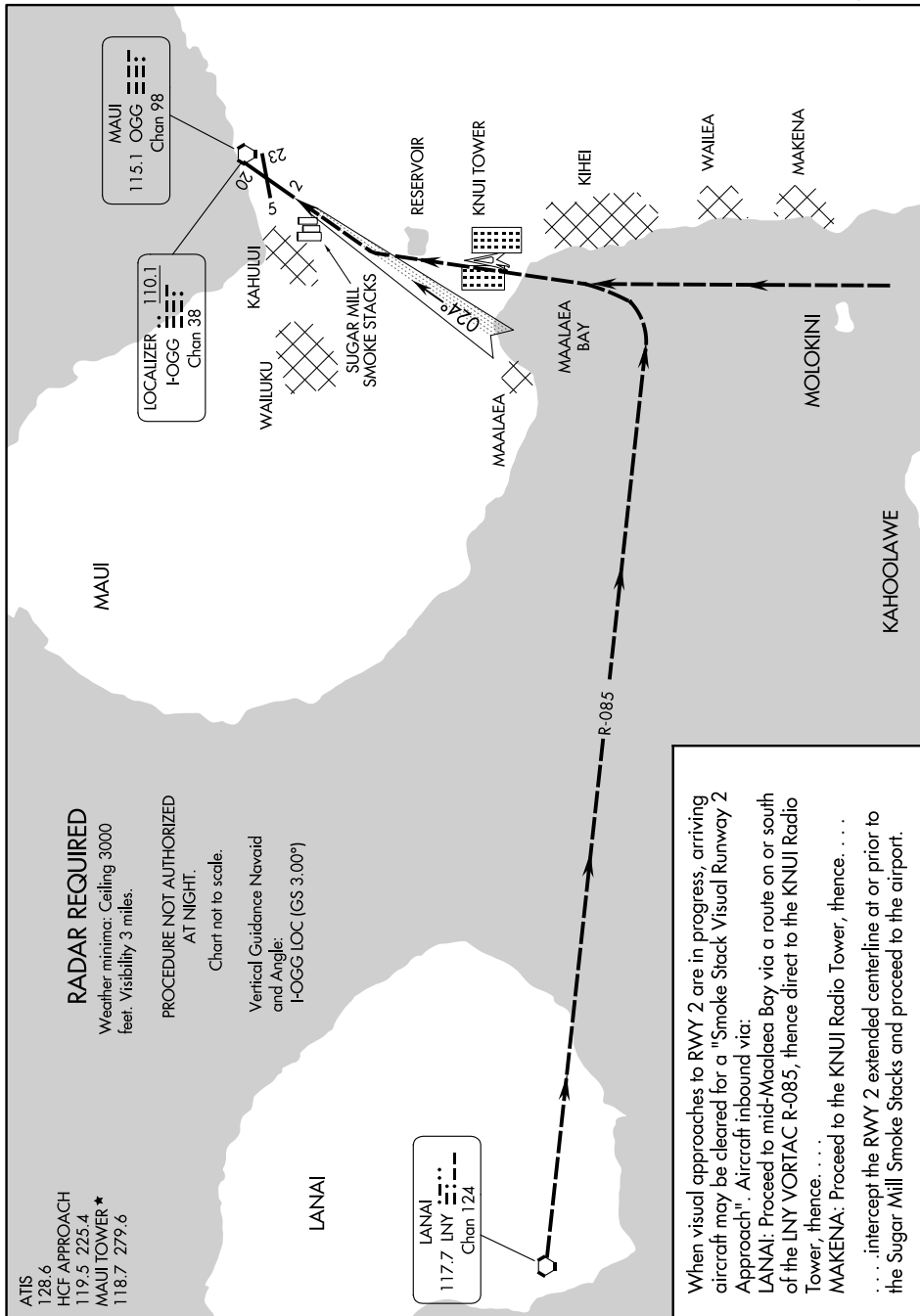


SMOKE STACK VISUAL RWY 2

PAC, 14 MAY 2026 to 09 JUL 2026



RADAR REQUIRED

Weather minima: Ceiling 3000 feet. Visibility 3 miles.

PROCEDURE NOT AUTHORIZED AT NIGHT.

Chart not to scale.

Vertical Guidance Navaid and Angle: I-OGG LOC (GS 3.00°)

ATIS 128.6
 HCF APPROACH 119.5 225.4
 MAUI TOWER ★ 118.7 279.6

LANAI 117.7 LNY Chan 124

When visual approaches to RWY 2 are in progress, arriving aircraft may be cleared for a "Smoke Stack Visual Runway 2 Approach". Aircraft inbound via:
 LANAI: Proceed to mid-Maalaea Bay via a route on or south of the LNY VORTAC R-085, thence direct to the KNUJI Radio Tower, thence. . . .
 MAKANA: Proceed to the KNUJI Radio Tower, thence. . . .
 . . . intercept the RWY 2 extended centerline at or prior to the Sugar Mill Smoke Stacks and proceed to the airport.

PAC, 14 MAY 2026 to 09 JUL 2026

SMOKE STACK VISUAL RWY 2

20° 54'N-156° 26'W

KAHULUI, HAWAII
KAHULUI (OGG)(PHOG)