

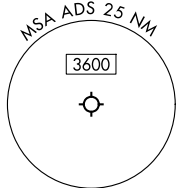
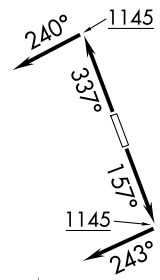
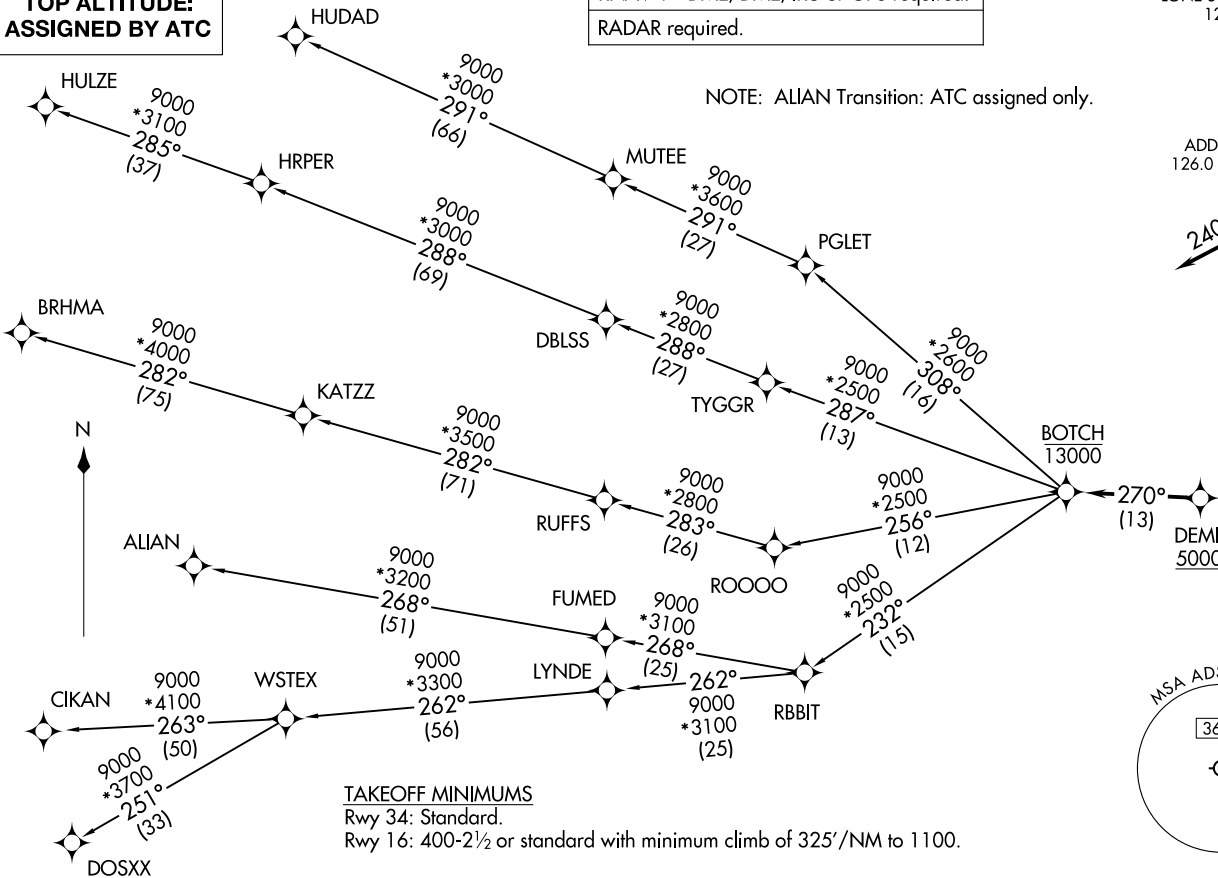
**TOP ALTITUDE:  
ASSIGNED BY ATC**

RNAV 1 - DME/DME/IRU or GPS required.

RADAR required.

LONE STAR DEP CON  
124.3 282.275  
ATIS  
133.4  
CLNC DEL  
119.55  
GND CON  
121.6  
ADDISON TOWER\*  
126.0 (CTAF) 239.0

NOTE: ALIAN Transition: ATC assigned only.



**TAKEOFF MINIMUMS**  
Rwy 34: Standard.  
Rwy 16: 400-2½ or standard with minimum climb of 325'/NM to 1100.

(CONTINUED ON FOLLOWING PAGE)

NOTE: Chart not to scale.

BOTCH TWO DEPARTURE (RNAV)  
BOTCH2.BOTCH 14MAY26  
DALLAS, TEXAS  
ADDISON (ADS)

BOTCH TWO DEPARTURE (RNAV)  
26134  
AL788 (FAA)  
ADDISON (ADS)  
DALLAS, TEXAS

# BOTCH TWO DEPARTURE (RNAV)



## DEPARTURE ROUTE DESCRIPTION

TAKEOFF RUNWAY 16: Climb on heading 157° to 1145, then on heading 243° or as assigned by ATC, for vectors to cross DEMII at or above 5000, thence. . .

TAKEOFF RUNWAY 34: Climb on heading 337° to 1145, then on heading 240° or as assigned by ATC, for vectors to cross DEMII at or above 5000, thence. . .

. . . on track 270° to cross BOTCH at or below 13000, then on (transition). Maintain ATC assigned altitude, expect filed altitude 10 minutes after departure.

ALIAN TRANSITION (BOTCH2.ALIAN)

BRHMA TRANSITION (BOTCH2.BRHMA)

CIKAN TRANSITION (BOTCH2.CIKAN)

DOSXX TRANSITION (BOTCH2.DOSXX)

HUDAD TRANSITION (BOTCH2.HUDAD)

HULZE TRANSITION (BOTCH2.HULZE)

WSTEX TRANSITION (BOTCH2.WSTEX)

SC-2, 14 MAY 2026 to 11 JUN 2026

SC-2, 14 MAY 2026 to 11 JUN 2026