

VOR RAL 108.6	APP CRS 079°	Rwy Ldg TDZE Apt Elev	5401 795 819
-------------------------	------------------------	-----------------------------	---

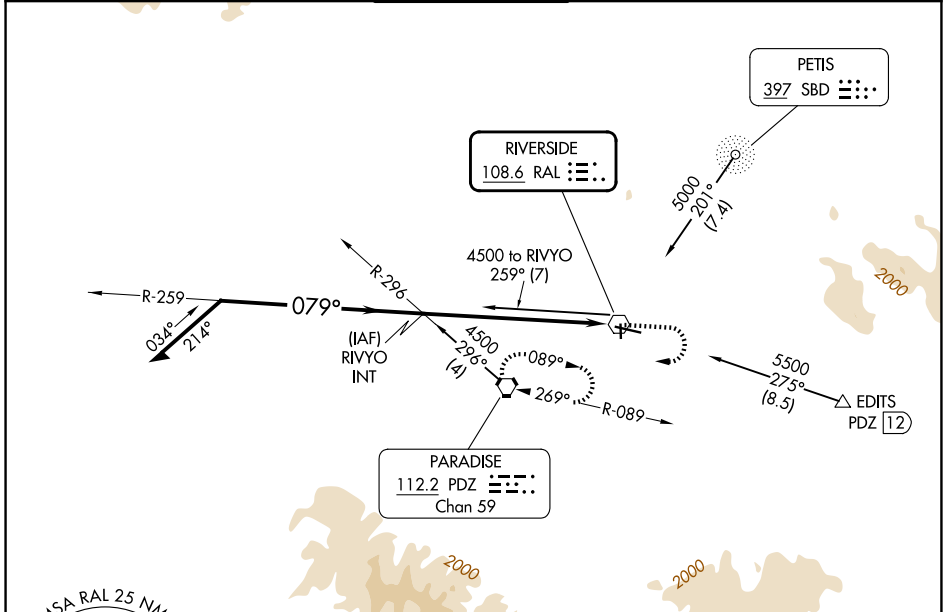
VOR RWY 9

RIVERSIDE (RAL)

⚠ When local altimeter setting not received, use Chino altimeter setting and increase MDA 60 feet.

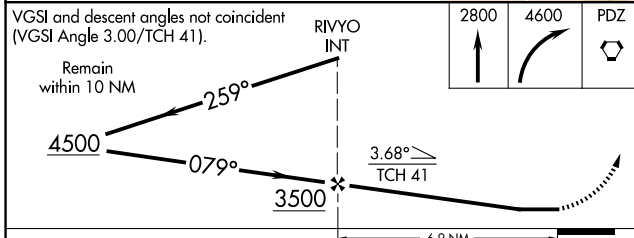
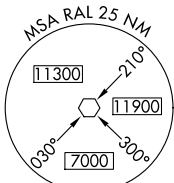
MISSED APPROACH: Climb to 2800 then climbing right turn to 4600 direct PDZ VORTAC and hold.

ATIS 128.8	SOCAL APP CON 135.4 377.125	RIVERSIDE TOWER ★ 121.0 (CTAF) 0 257.8	GND CON 124.125	UNICOM 122.95
----------------------	---------------------------------------	---	---------------------------	-------------------------

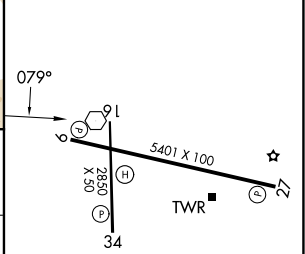


SW-3, 14 MAY 2026 to 11 JUN 2026

SW-3, 14 MAY 2026 to 11 JUN 2026



ELEV 819	TDZE 795
----------	----------



CATEGORY	A	B	C	D
S-9	2020-1¼ 1225 (1300-1¼)	2020-1½ 1225 (1300-1½)	2020-3 1225 (1300-3)	NA
CIRCLING	2020-1¼ 1201 (1300-1¼)	2020-1½ 1201 (1300-1½)	2020-3 1201 (1300-3)	NA

MIRL Rwy 9-27 and 16-34

FAF to MAP 6.9 NM					
Knots	60	90	120	150	180
Min:Sec	6:54	4:36	3:27	2:46	2:18