

MARYSVILLE, CALIFORNIA

HI-ILS or LOC Z RWY 15

LOC I-BAB 109.5	APCH CRS 145°	Rwy ldg TDZE Arpt Elev	12,001 113 113
---------------------------	-------------------------	------------------------------	---

(USAF)

BEALE AFB (KBAB)

RADAR or DME required

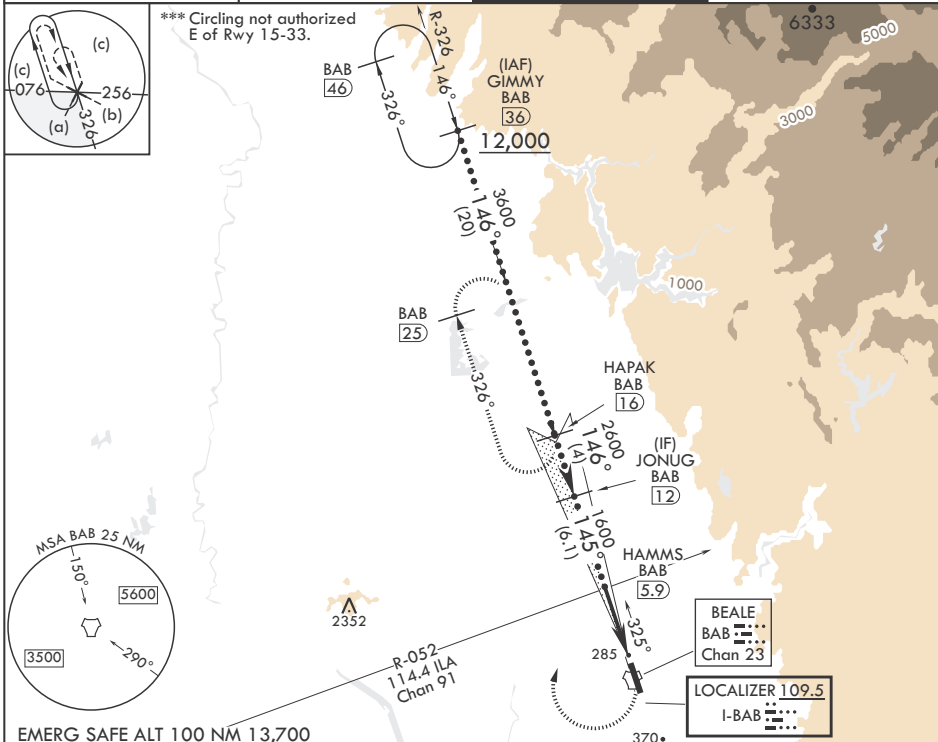
▼ * When ALS inop, increase CAT CDE RVR to 40 and vis to 3/4 mile.
** When ALS inop, increase CAT CDE vis to 1 3/8 miles.

ALSF-1

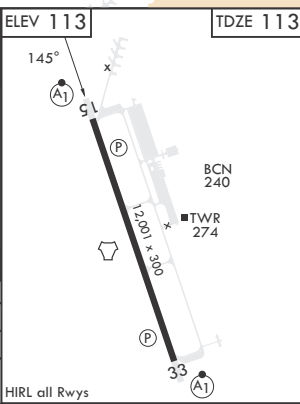
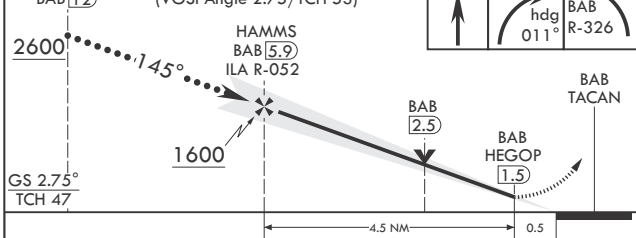


MISSED APPROACH: Climb to to 700 on heading 145°, then climbing right turn to 4400 heading 011° to intercept BAB R-326 to HAPAK and hold, continue climb in hold to 4400.

ATIS* 124.55 273.5	NORCAL APP CON 125.4 259.1	TOWER* 119.4 284.75	GND CON 121.6 257.75
------------------------------	--------------------------------------	-------------------------------	--------------------------------



JONUG BAB 12	VGSI and glideslope not coincident. (VGSI Angle 2.75/TCH 53)	700	4400	↑	hdg 011°	BAB R-326	ELEV 113	TDZE 113
--------------	--	-----	------	---	----------	-----------	----------	----------



CATEGORY	C	D	E
S-ILS 15*	313/24	200	(200-1/2)
S-LOC 15**	600/50	487	(500-1)
☐ CIRCLING***	600-1 1/2 487 (500-1 1/2)	800-2 1/4 687 (700-2 1/4)	800-2 1/2 687 (700-2 1/2)

MARYSVILLE, CALIFORNIA

39°08'N - 121°26'W

BEALE AFB (KBAB)

Amdt 6 25JAN24

HI-ILS or LOC Z RWY 15

SW-2, 14 MAY 2026 to 11 JUN 2026

SW-2, 14 MAY 2026 to 11 JUN 2026