

MARYSVILLE, CALIFORNIA

ILS or LOC Y RWY 33

LOC I-MIZ 109.5	APCH CRS 325°	Rwy ldg TDZE Arprt Elev	12,001 105 113
---------------------------	-------------------------	-------------------------------	-------------------------------------------

-(USAF)

BEALE AFB (KBAB)

RADAR or DME required

▼ * When ALS inop, increase RVR to 40 and vis to 3/4 mile.
 ** When ALS inop, increase CAT AB RVR to 55 and vis to 1 mile;
 CAT CDE RVR to 60 and vis to 1 1/8 miles.

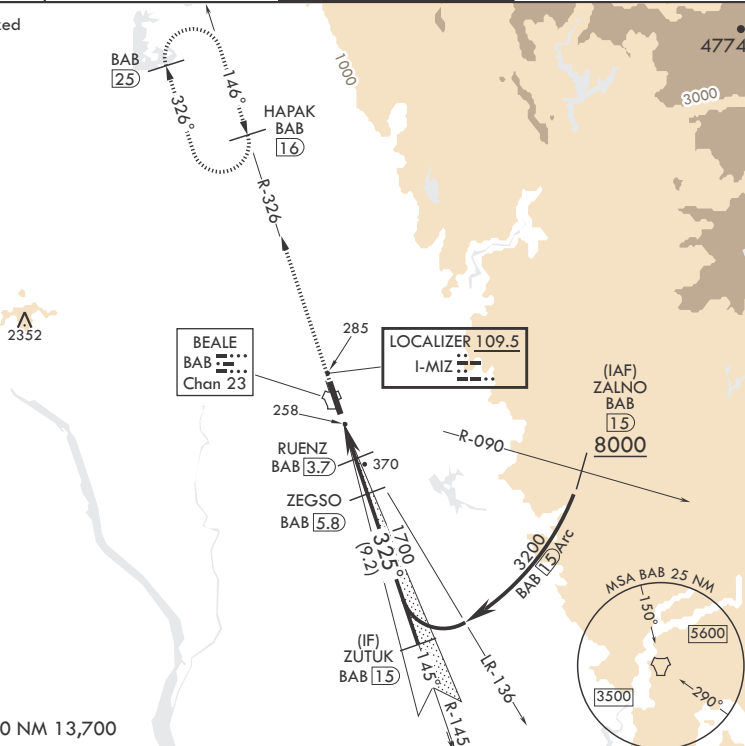
ALSF-1



MISSED APPROACH: Climb to 3600 intercept
 BAB TACAN R-326 to HAPAK and hold.

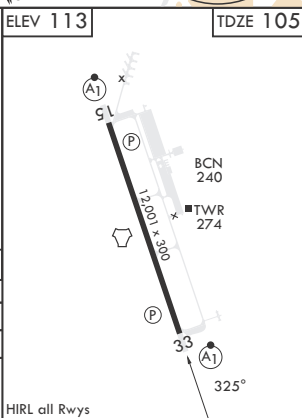
ATIS* 124.55 273.5	NORCAL APP CON 125.4 259.1	TOWER* 119.4 284.75	GND CON 121.6 257.75
------------------------------	--------------------------------------	-------------------------------	--------------------------------

*** Circling not authorized
 E of Rwy 15-33.



EMERG SAFE ALT 100 NM 13,700

3600 BAB R-326	HAPAK BAB 16	ZUTUK BAB 1.5	ELEV 113	TDZE 105	
BAB TACAN	ZAPUX BAB 1.5	BAB 2.1	RUENZ BAB 3.7	ZEGSO BAB 5.8	
1000		1700		325°	
0.5		2.2 NM		2.1 NM	
GS 3.00°		TCH 50			
CATEGORY	A	B	C	D	E
S-ILS 33*	305/24		200	(200-1/2)	
S-LOC 33**	520/24	415 (500-1/2)	520/40	415	(500-3/4)
CIRCLING***	600-1	487 (500-1)	600-1 1/2 487 (500-1 1/2)	800-2 1/4 687 (700-2 1/4)	800-2 1/2 687 (700-2 1/2)



MARYSVILLE, CALIFORNIA

39°08'N - 121°26'W

BEALE AFB (KBAB)

Amdt 6 22FEB24

ILS or LOC Y RWY 33

SW-2, 14 MAY 2026 to 11 JUN 2026

SW-2, 14 MAY 2026 to 11 JUN 2026