

MARYSVILLE, CALIFORNIA

RNAV (GPS) RWY 15

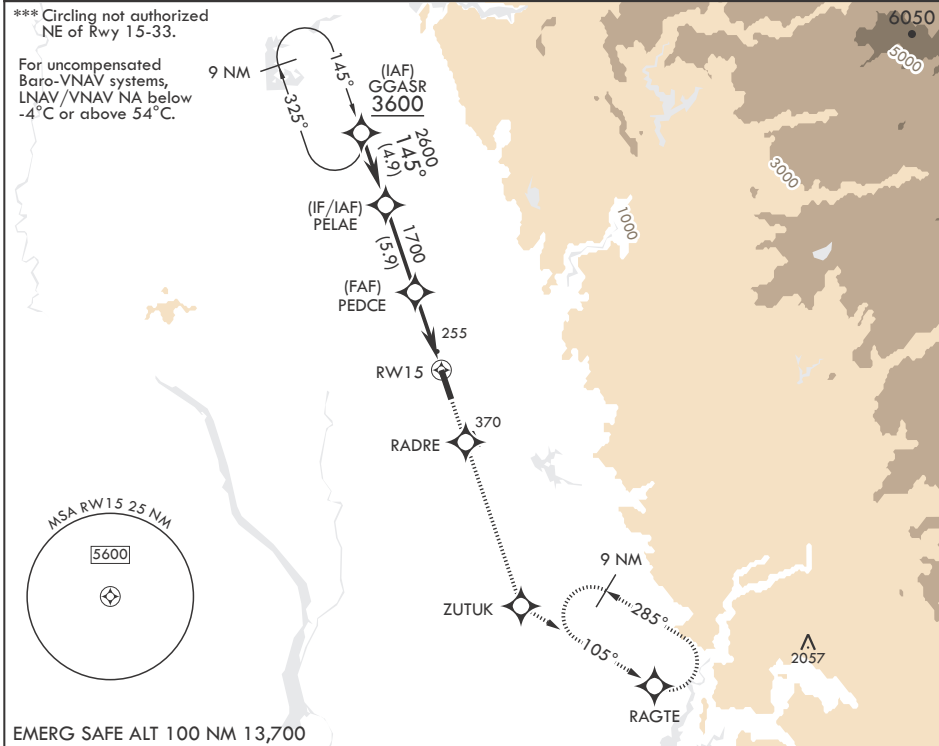
APCH CRS	Rwy Idg	12,001
145°	THRE	113
	Arprt Elev	113

-(USAF)

BEALE AFB (KBAB)

RNP APCH	ALSF-1	MISSED APPROACH: Climb to 3600 direct RADRE, track 145° to ZUTUK, track 105° to RAGTE and hold, continue climb-in-hold to 3600.
<p>▼ * When ALS inop, increase RVR to 60, vis to 1 1/8 miles. ** When ALS inop, increase CAT AB RVR to 55 and vis to 1 mile; CAT CDE vis to 1 3/8 miles.</p>		

ATIS★	NORCAL APP CON	TOWER★	GND CON
124.55 273.5	125.4 259.1	119.4 284.75	121.6 257.75



PELAE	VGSi and RNAV glidepath not coincident (VGSi Angle 2.75/TCH 53).			3600	RADRE	tr 145°	ZUTUK	ELEV 113	THRE 113
2600	145°		1700	1.5 NM to RWY 15		RWY 15			
GP 2.75°	TCH 47		5.3 NM						
CATEGORY	A	B	C	D	E				
LNAV/VNAV DA*	530/40		417		(500-¾)				
LNAV MDA**	600/24	487 (500-½)	600/50	487	(500-1)				
☐ CIRCLING***	600-1	487 (500-1)	600-1½	800-2¼	800-2½				
			487 (500-½)	687 (700-2¼)	687 (700-2½)				

HIRL all Rwys

MARYSVILLE, CALIFORNIA

39°08'N - 121°26'W

BEALE AFB (KBAB)

Amdt 2 25JAN24

RNAV (GPS) RWY 15

SW-2, 14 MAY 2026 to 11 JUN 2026

SW-2, 14 MAY 2026 to 11 JUN 2026