

MARYSVILLE, CALIFORNIA

# TACAN Y RWY 33

TACAN BAB Chan 23	APCH CRS 317°	Rwy ldg 12,001
		TDZE 105
		Arprt Elev 113

-(USAF)

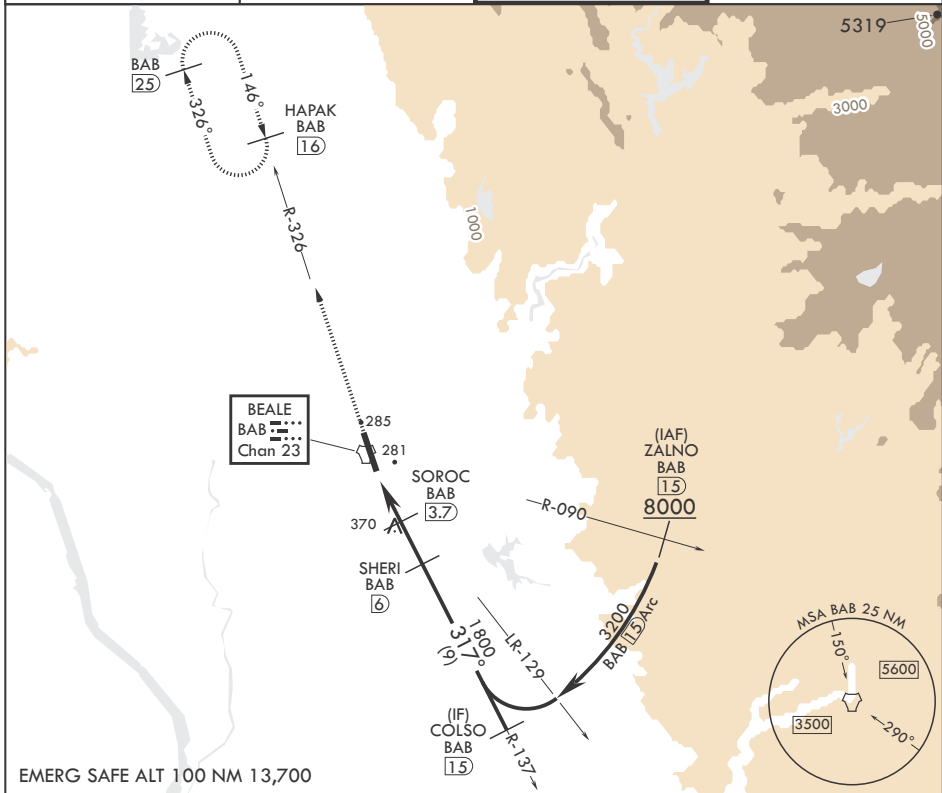
BEALE AFB (KBAB)

▼ \* When ALS inop, increase CAT AB RVR to 55 and vis to 1 mile, CAT CDE vis to 1 1/4 miles.  
\*\* Circling not authorized E of Rwy 15-33.

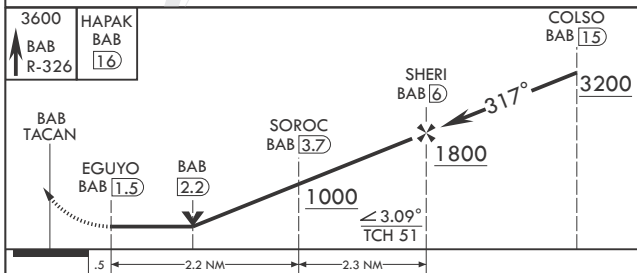


MISSED APPROACH: Climb to 3600 intercept BAB TACAN R-326 to HAPAK and hold.

ATIS* 124.55 273.5	NORCAL APP CON 125.4 259.1	TOWER* 119.4 284.75	GND CON 121.6 257.75
-----------------------	-------------------------------	------------------------	-------------------------

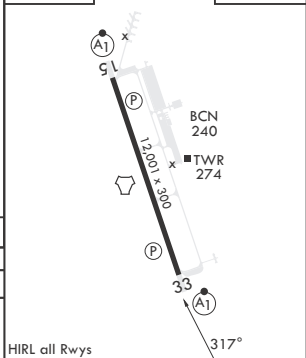


EMERG SAFE ALT 100 NM 13,700



ELEV 113	TDZE 105
----------	----------

CATEGORY	A	B	C	D	E
S-33*	540/24 435 (500-3/4)		540/40 435 (500-3/4)		
CIRCLING**	600-1 487 (500-1)		600-1 1/2 487 (500-1 1/2)	800-2 1/4 687 (700-2 1/4)	800-2 1/2 687 (700-2 1/2)



MARYSVILLE, CALIFORNIA  
Amdt 6 25JAN24

39°08'N - 121°26'W

BEALE AFB (KBAB)

# TACAN Y RWY 33

SW-2, 14 MAY 2026 to 11 JUN 2026

SW-2, 14 MAY 2026 to 11 JUN 2026

HIRL all Rwys