

APP CRS <b>349°</b>	Rwy Ldg TDZE Apt Elev	<b>6500</b> <b>96</b> <b>153</b>
------------------------	-----------------------------	--

# RNAV (RNP) Z RWY 35

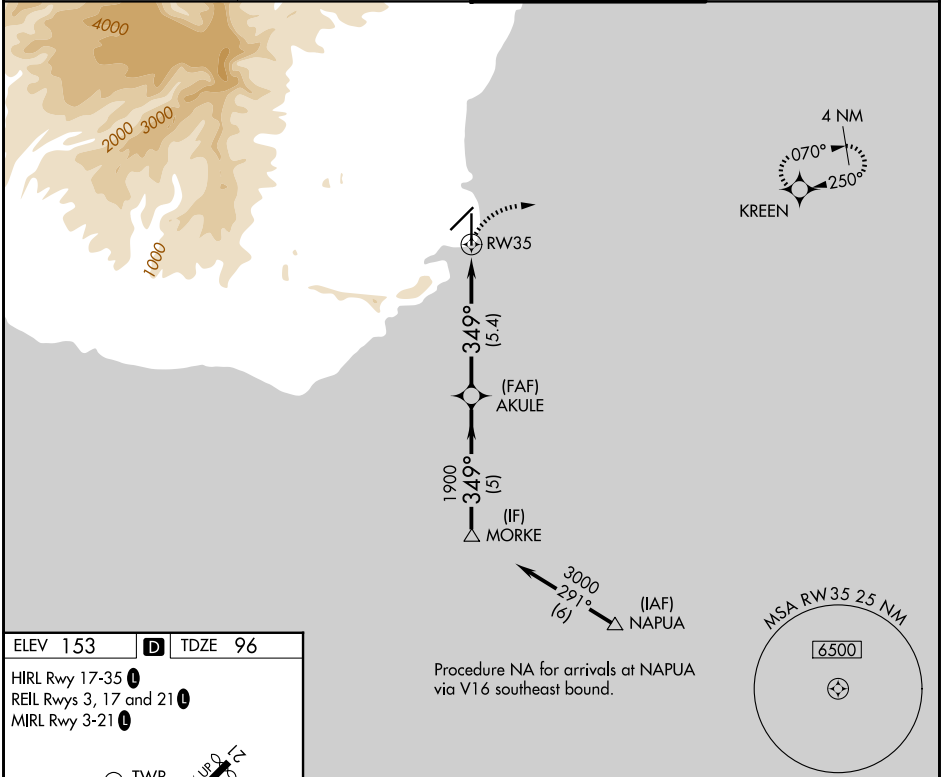
LIHUE (LIH)(PHLI)

**V** GPS required. For inoperative MALSR, increase RNP 0.30 visibility to 1¾. For uncompensated Baro-VNAV systems, procedure NA below 14°C (57°F) or above 48°C (119°F).



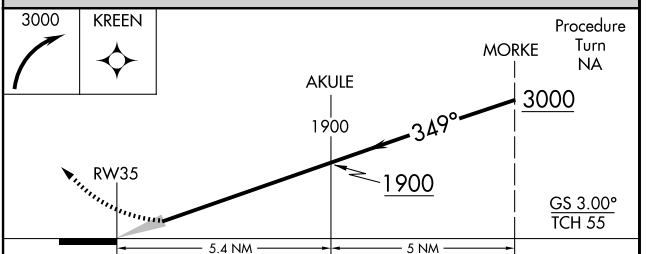
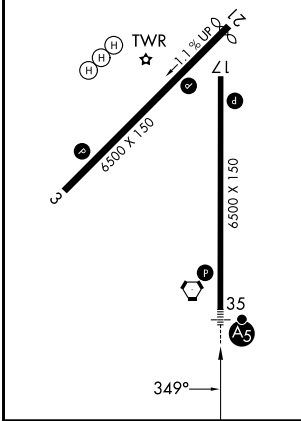
**MISSED APPROACH:** Climbing right turn to 3000 direct KREEN and hold.

ATIS <b>127.2</b>	HCF CENTER <b>126.5 269.4</b>	LIHUE TOWER* <b>118.9(CTAF) 263.1</b>	GND CON <b>121.9</b>
----------------------	----------------------------------	--	-------------------------



ELEV 153	<b>D</b>	TDZE 96
----------	----------	---------

HIRL Rwy 17-35  
REIL Rwys 3, 17 and 21  
MIRL Rwy 3-21



CATEGORY	A	B	C	D
RNP 0.30 DA	599-1¼ 503 (500-1¼)			

**AUTHORIZATION REQUIRED**

PAC, 14 MAY 2026 to 09 JUL 2026

PAC, 14 MAY 2026 to 09 JUL 2026