

LOC/DME I-LNY	APP CRS	Rwy Ldg TDZE	5000
111.1	033°	1307	
Chan 48		Apt Elev	1308

ILS or LOC RWY 3

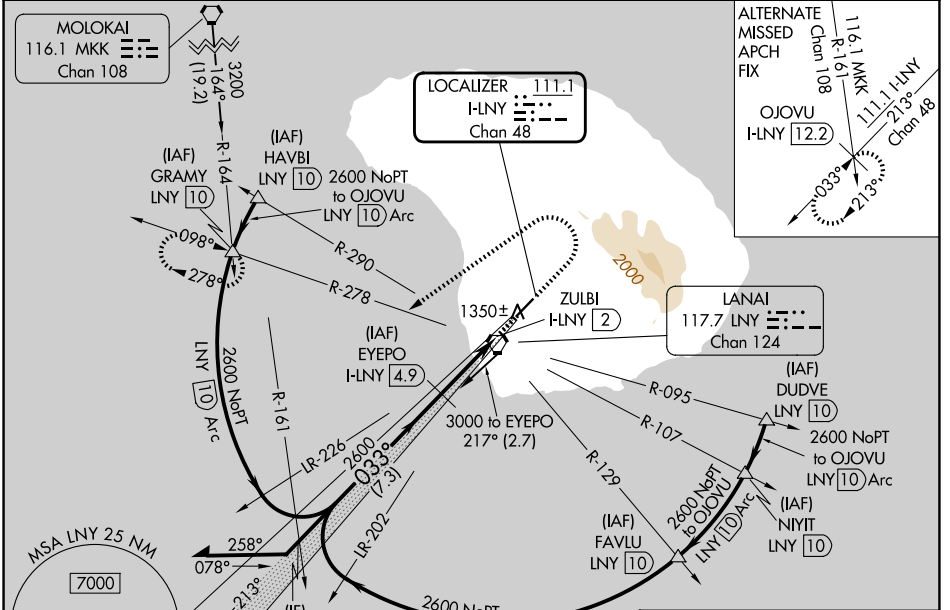
LANAI (LNY)(PHNY)

DME required.

NA Circling Rwy 21 NA at night. Circling NA for Cat C southeast of Rwy 3-21. Autopilot coupled approach NA below 2300. When local altimeter setting not received, procedure NA, except for operators with approved weather reporting service.

MISSED APPROACH: Climb to 1800 then climbing left turn to 3500 on heading 224° and LNY VORTAC R-278 to GRAMY INT/LNY VORTAC 10 DME and hold.

AWOS-3P 118.375	HCF CENTER 119.3 307.1	CTAF 122.9
---------------------------	----------------------------------	----------------------



VGSI and ILS glidepath not coincident (VGSI Angle 3.00/TCH 49).

Remain within 10 NM

3000

2600

033°

213°

GS 3.00° TCH 52

2600

2.9 NM

1 NM

EYEPO I-LNY 4.9

ZULBI I-LNY 2

1800

3500

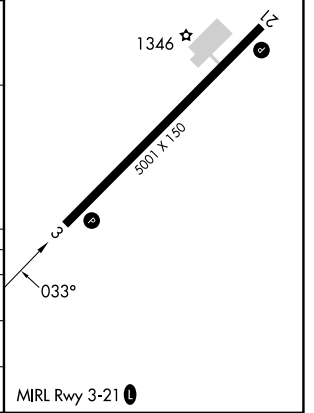
hdg 224°

Use I-LNY DME when on the localizer course.

GRAMY I-LNY 10

ELEV 1308	D	TDZE 1307
-----------	---	-----------

CATEGORY	A	B	C	D
S-ILS 3	1588-1 281 (300-1)			
S-LOC 3	1600-1¼ 293 (300-1¼)			
CIRCLING	1900-1¼ 592 (600-1¼)	1940-1¼ 632 (700-1¼)	2240-2¾ 932 (1000-2¾)	NA



PAC, 14 MAY 2026 to 09 JUL 2026

PAC, 14 MAY 2026 to 09 JUL 2026