

APP CRS	Rwy Ldg	5000
033°	TDZE	1307
	Apt Elev	1308

RNAV (GPS) RWY 3

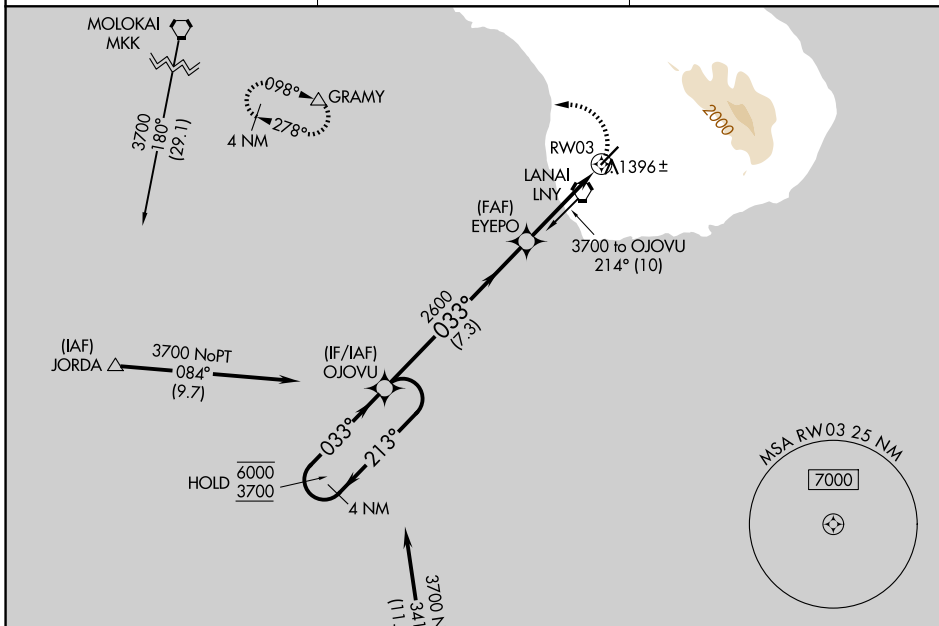
LANAI (LNY)(PHNY)

RNP APCH - GPS.

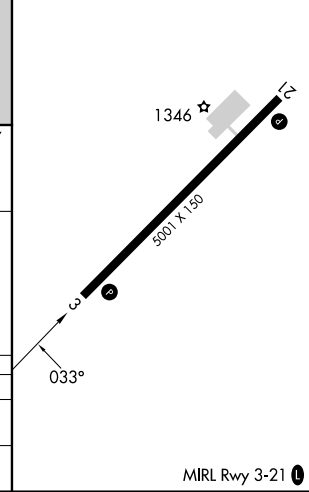
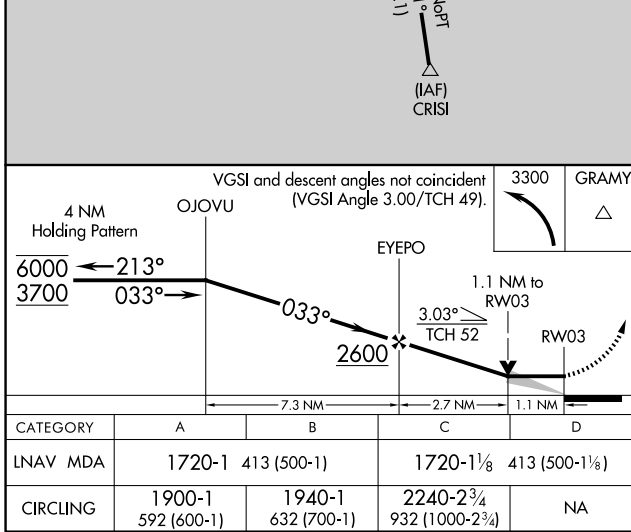
⚠ Circling Rwy 21 NA at night. Circling NA for Cat C southeast of Rwy 3-21. When local altimeter setting not received, procedure NA, except for operators with approved weather reporting service.

MISSED APPROACH: Climbing left turn to 3300 direct GRAMY and hold.

AWOS-3P 118.375	HCF CENTER 119.3 307.1	CTAF 122.9 0
---------------------------	----------------------------------	-------------------------------



ELEV 1308	D TDZE 1307
-----------	--------------------



CATEGORY	A	B	C	D
RNAV MDA	1720-1	413 (500-1)	1720-1½	413 (500-1½)
CIRCLING	1900-1 592 (600-1)	1940-1 632 (700-1)	2240-2¾ 932 (1000-2¾)	NA

PAC, 14 MAY 2026 to 09 JUL 2026

PAC, 14 MAY 2026 to 09 JUL 2026