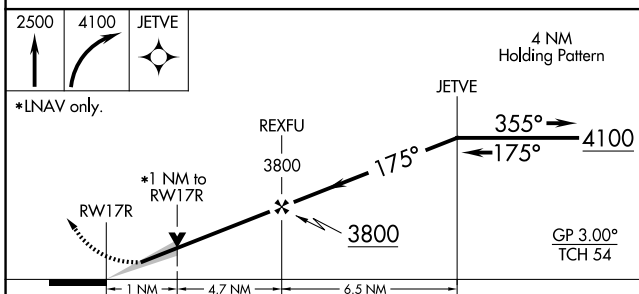
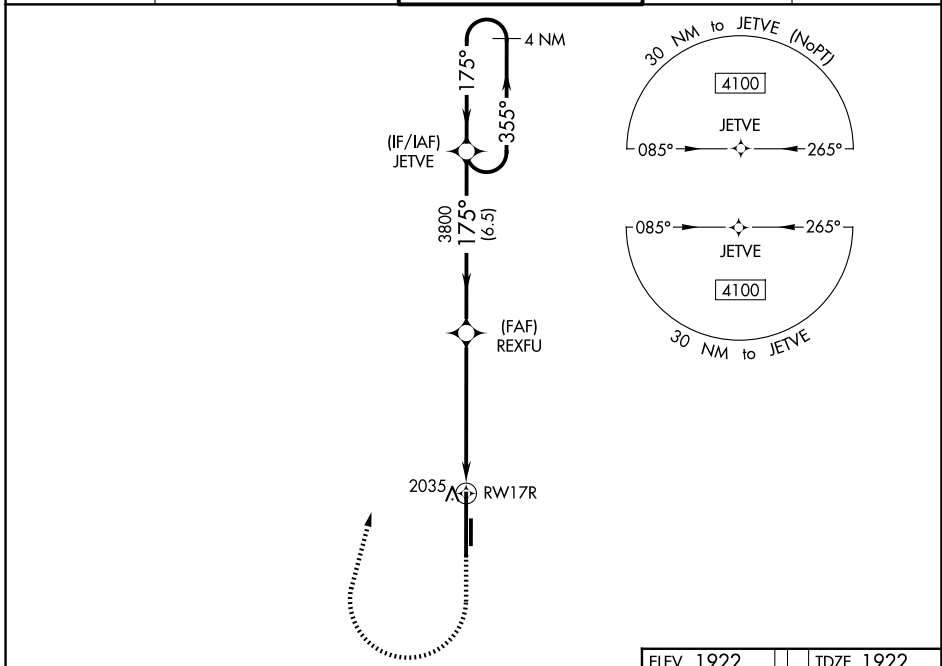


WAAS CH 86717 W17A	APP CRS 175°	Rwy Ldg 13503 TDZE 1922 Apt Elev 1922
--	------------------------	--

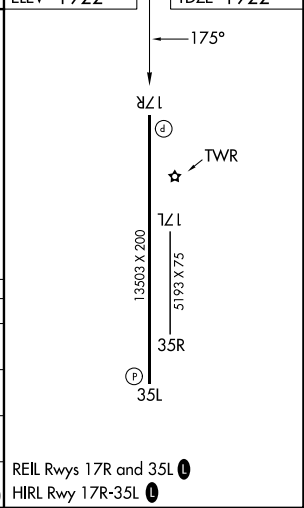
RNAV (GPS) RWY 17R

CLINTON/SHERMAN (CSM)

<p>▼ For uncompensated Baro-VNAV systems, LNAV/VNAV NA below -12°C (11°F) or above 54°C (130°F). Circling NA east of Rwy 17R-35L. DME/DME RNP-0.3 NA.</p>	<p>MISSED APPROACH: Climb to 2500 then climbing right turn to 4100 direct JETVE and hold.</p>			
ASOS 118.45	FORT WORTH CENTER 128.4 269.37	CLINTON/SHERMAN TOWER* 119.6 (CTAF) 0 256.9	GND CON 121.7 239.0	UNICOM 122.95



ELEV 1922	TDZE 1922
<p>2500 4100 JETVE</p> <p>*LNAV only.</p> <p>RW17R 1 NM 4.7 NM 6.5 NM</p> <p>REXFU 3800</p> <p>JETVE 3800</p> <p>GP 3.00° TCH 54</p>	<p>4 NM Holding Pattern</p> <p>JETVE</p> <p>355° 4100</p> <p>175°</p> <p>175°</p> <p>3800</p>
CATEGORY	A B C D E
LPV DA	2122-3/4 200 (200-3/4)
LNAV/VNAV DA	2234-1 312 (400-1)
LNAV MDA	2300-1 378 (400-1)
CIRCLING	2340-1 418 (500-1) 2380-1 458 (500-1) 2380-1 1/2 698 (700-2 1/4) 2620-2 1/2 698 (700-2 1/2)



SC-1, 14 MAY 2026 to 11 JUN 2026

SC-1, 14 MAY 2026 to 11 JUN 2026