

WAAS CH 40217 W35A	APP CRS 355°	Rwy Ldg TDZE Apt Elev	13503 1913 1922
----------------------------------------	------------------------	-----------------------------	--------------------------------------------

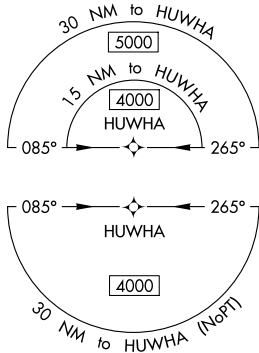
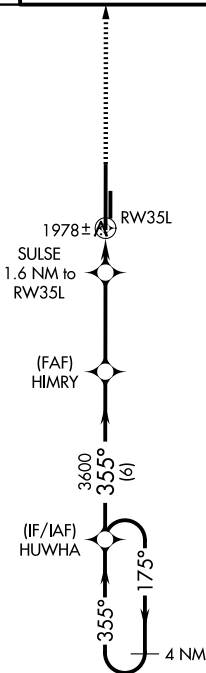
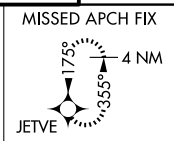
RNAV (GPS) RWY 35L

CLINTON/SHERMAN (CS/M)

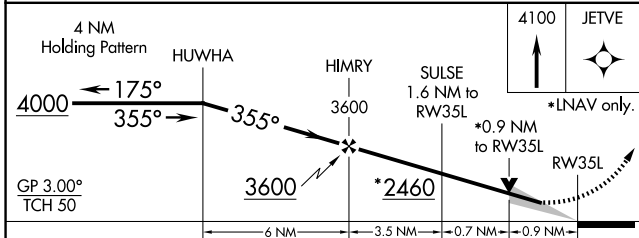
▼ For uncompensated Baro-VNAV systems, LNAV/VNAV NA below -12°C (11°F) or above 54°C (130°F). Circling NA east of Rwy 17R-35L. DME/DME RNP-0.3 NA.

MISSED APPROACH: Climb to 4100 direct JETVE and hold.

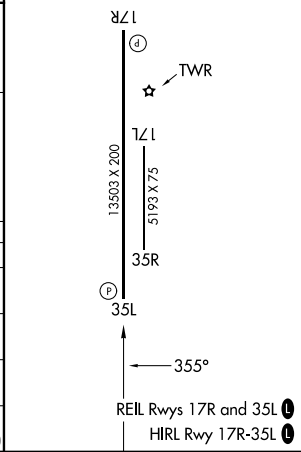
ASOS 118.45	FORT WORTH CENTER 128.4 269.37	CLINTON/SHERMAN TOWER* 119.6 (CTAF) 256.9	GND CON 121.7 239.0	UNICOM 122.95
-----------------------	------------------------------------------	-----------------------------------------------------	-------------------------------	-------------------------



ELEV	1922	TDZE	1913
------	------	------	------



CATEGORY	A	B	C	D	E
LPV DA		2113-¾	200 (200-¾)		
LNAV/VNAV DA		2163-¾	250 (300-¾)		
LNAV MDA		2240-1	327 (400-1)		
CIRCLING	2340-1 418 (500-1)	2380-1 458 (500-1)	2380-1½ 458 (500-1½)	2620-2¼ 698 (700-2¼)	2620-2½ 698 (700-2½)



SC-1, 14 MAY 2026 to 11 JUN 2026

SC-1, 14 MAY 2026 to 11 JUN 2026