

LOC/DME I-PAJ 109.1 Chan 28	APP CRS 191°	Rwy Ldg 10801
		TDZE 991
		Apt Elev 1027

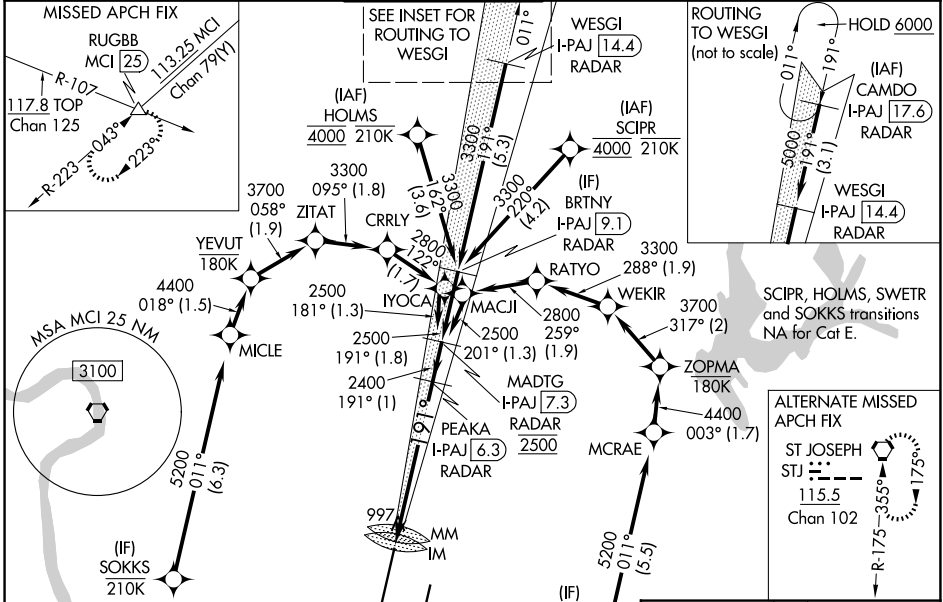
ILS RWY 19R (SA CAT I)

KANSAS CITY INTL (MCI)

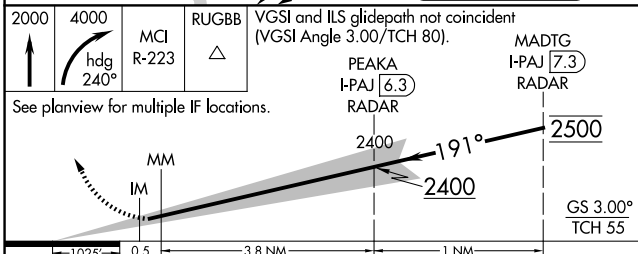
RNP APCH - GPS. From SCIPR or HOLMS or SWETR or SOKKS.
 DME or RADAR required. RADAR required for procedure entry at CAMDO.
 Requires specific OPSPEC, MSPEC, or LOA approval. Simultaneous approach authorized except from SCIPR, HOLMS, SOKKS, and SWETR.

ALSF-2
 MISSED APPROACH: Climb to 2000 then climbing right turn to 4000 on heading 240° and MCI VORTAC R-223 to RUGBB INT/MCI 25 DME and hold.

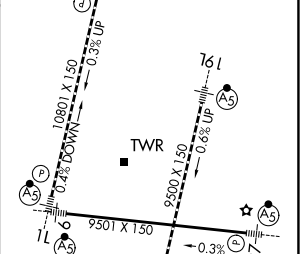
D-ATIS 128.375	KANSAS CITY APP CON 120.95 318.1	INTERNATIONAL TOWER 128.2 254.25	GND CON 121.8	CLNC DEL 135.7	CPDLC
--------------------------	--	--	-------------------------	--------------------------	-------



ELEV 1027	TDZE 991
LOCALIZER 109.1 I-PAJ Chan 28	



2000	4000	MCI R-223	RUGBB
↑	hdg 240°		△



CATEGORY	A	B	C	D	E
S-ILS 19R					

RA 135/14 150 DA 1141

SA CATEGORY I ILS - SPECIAL AIRCREW & AIRCRAFT CERTIFICATION REQUIRED

HIRL all Rwws
 TDZ/CL Rwws 1L, 1R, 19L and 19R

NC-3, 14 MAY 2026 to 11 JUN 2026

NC-3, 14 MAY 2026 to 11 JUN 2026