

LOC/DME I-DOT 110.5 Chan 42	APP CRS 011°	Rwy Ldg 10801 TDZE 1014 Apt Elev 1027
---	------------------------	--

ILS or LOC RWY 1L

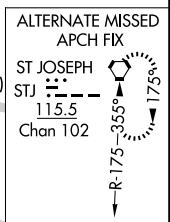
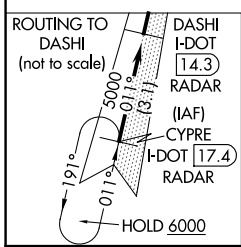
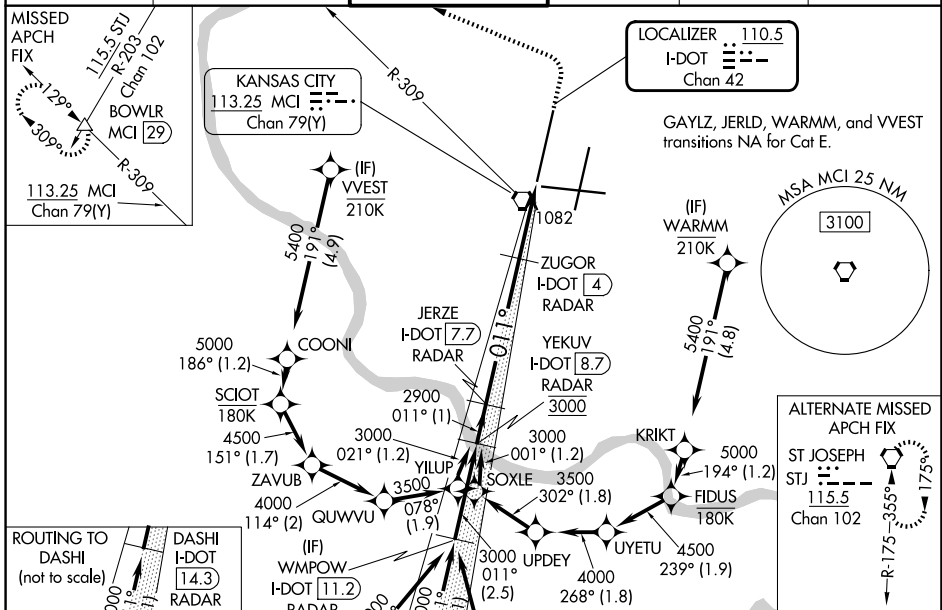
KANSAS CITY INTL (MCI)

RNP APCH - GPS. From GAYLZ or JERLD or WARMM or VVEST.
 DME or RADAR required. RADAR required for procedure entry at CYPRE.
 For inop ALS, increase S-ILS 1L Cat E visibility to RVR 4000 and S-LOC 1L Cat E visibility to RVR 5000. Simultaneous approach authorized except from GAYLZ, JERLD, VVEST, and WARMM.

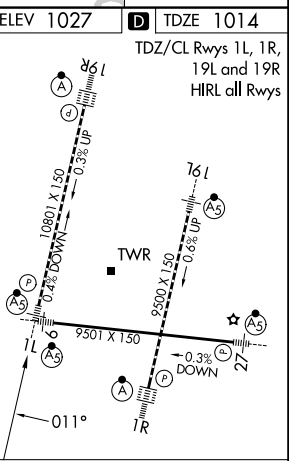
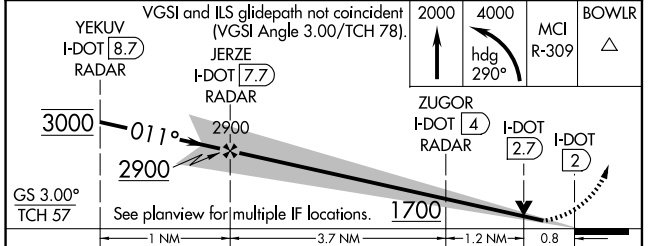
MALS R

 MISSED APPROACH: Climb to 2000 then climbing left turn to 4000 on heading 290° and MCI R-309 to BOWL R INT/MCI 29 DME and hold.

D-ATIS 128.375	KANSAS CITY APP CON 120.95 318.1	INTERNATIONAL TOWER 128.2 254.25	GND CON 121.8	CLNC DEL 135.7	CPDLC
--------------------------	--	--	-------------------------	--------------------------	-------



ELEV 1027	TDZE 1014
TDZ/CL Rwy 1L, 1R, 19L and 19R HIRL all Rwys	



CATEGORY	A	B	C	D	E
S-ILS 1L	1214/18 200 (200-½)				
S-LOC 1L	1340/24	326 (400-½)	1340/26		326 (400-½)
CIRCLING	1540-1	513 (600-1)	1540-1½ 513 (600-1½)	1580-2	553 (600-2)

FAF to MAP 5.7 NM					
Knots	60	90	120	150	180
Min:Sec	5:42	3:48	2:51	2:17	1:54

NC-3, 14 MAY 2026 to 11 JUN 2026

NC-3, 14 MAY 2026 to 11 JUN 2026