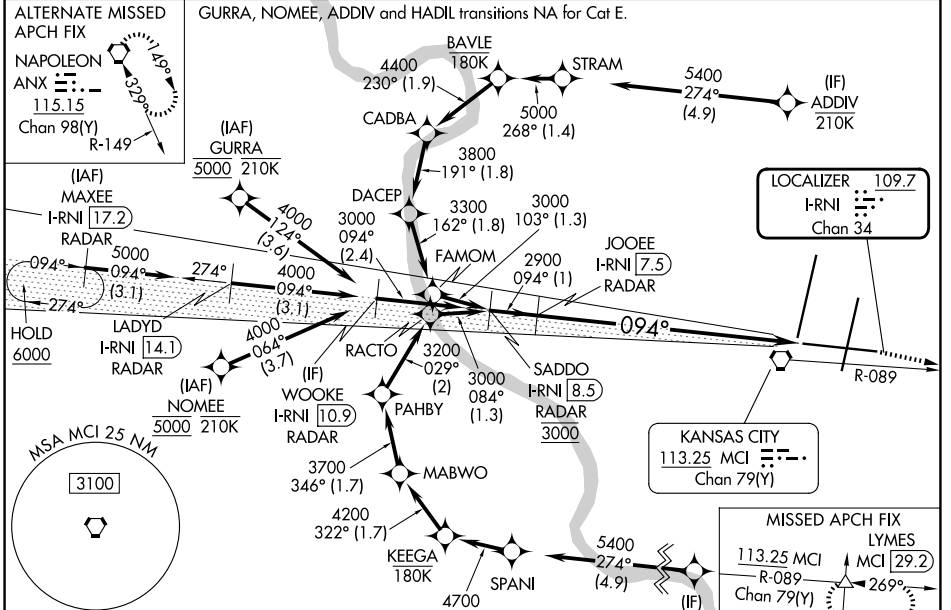


LOC/DME I-RNI 109.7 Chan 34	APP CRS 094°	Rwy Ldg TDZE Apt Elev 9501 1016 1027
---	------------------------	--

ILS or LOC RWY 9

KANSAS CITY INTL (MCI)

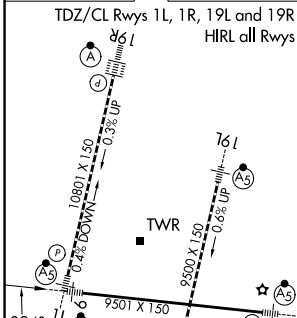
RNP APCH-GPS. From GURRA or NOMEIE or ADDIV or HADIL.		MALSR 	MISSED APPROACH: Climb to 4000 on MCI R-089 to LYMES INT/MCI 29.2 DME and hold.
DME or RADAR required. RADAR required for procedure entry at MAXEE.			
<p>▼ Inop table does not apply to S-ILS 9. For inop ALS, increase S-LOC 9 Cats A/B visibility to RVR 5500 and S-LOC 9 Cat E visibility to 1 3/4 SM.</p>			
D-ATIS 128.375	KANSAS CITY APP CON 120.95 318.1	INTERNATIONAL TOWER 128.2 254.25	GND CON 121.8
CLNC DEL 135.7		CPDLC	



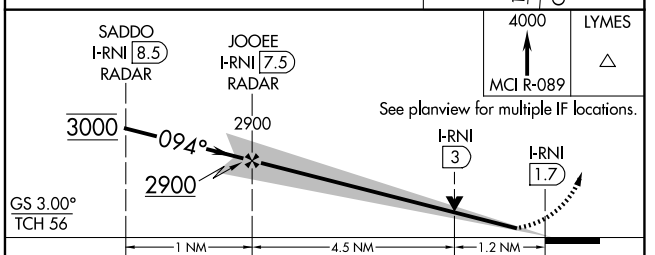
NC-3, 14 MAY 2026 to 11 JUN 2026

NC-3, 14 MAY 2026 to 11 JUN 2026

ELEV 1027	TDZE 1016
-----------	-----------



FAF to MAP 5.7 NM					
Knots	60	90	120	150	180
Min:Sec	5:42	3:48	2:51	2:17	1:54



CATEGORY	A	B	C	D	E
S-ILS 9	1266/40 250 (300-3/4)				
S-LOC 9	1460/40	444 (500-3/4)	1460/45 444 (500-3/4)		
CIRCLING	1540-1	513 (600-1)	1540-1 1/2	1580-2	553 (600-2)