

JSONN FOUR ARRIVAL (RNAV) Transition Routes
(JSONN.JSONN4) 10AUG23

(JSONN.JSONN4) 23222
JSONN FOUR ARRIVAL (RNAV) Transition Routes

AL-780 (FAA)

KANSAS CITY INTL (MCI)
KANSAS CITY, MISSOURI

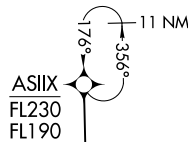
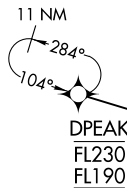
KANSAS CITY APP CON
120.95 318.1
D-ATIS
128.375

RNAV 1 - DME/DME/ IRU or GPS.

RADAR required.

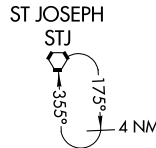
ASIX TRANSITION (ASIX.JSONN4)

DPEAK TRANSITION (DPEAK.JSONN4)



12000
*2900
176°
(27)

12000
*2900
104°
(58)



NOTE: Expect runway assignment from Kansas City TRACON upon initial contact.

NOTE: Chart not to scale.

(CONTINUED ON FOLLOWING PAGE)

See following page for arrival routes

KANSAS CITY, MISSOURI
KANSAS CITY INTL (MCI)

RNAV 1 - DME/DME/ IRU or GPS.
RADAR required.

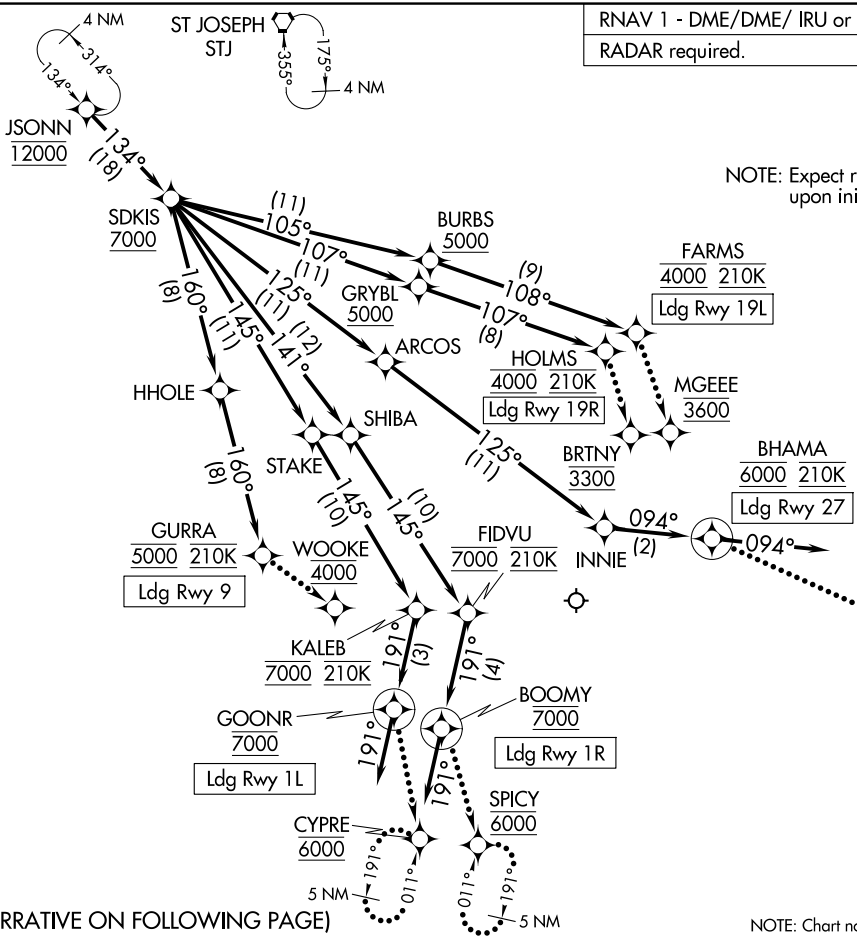
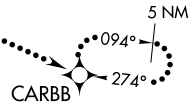
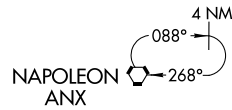
KANSAS CITY APP CON
120.95 318.1
D-ATIS
128.375

(JSONN,JSONN4) 23222

AL-780 (FAA)

KANSAS CITY INTL (MCI)
KANSAS CITY, MISSOURI

NOTE: Expect runway assignment from Kansas City TRACON upon initial contact.



JSONN FOUR ARRIVAL (RNAV) Arrival Routes
(JSONN,JSONN4) 10AUG23

KANSAS CITY, MISSOURI
KANSAS CITY INTL (MCI)

(NARRATIVE ON FOLLOWING PAGE)

NOTE: Chart not to scale.

ARRIVAL ROUTE DESCRIPTION

From JSONN on track 134° to cross SDKIS at or above 7000.

LANDING RUNWAY 1L: From SDKIS on track 145° to STAKE, then on track 145° to cross KALEB at 7000 and at 210K, then on track 191° to cross GOONR at 7000, then on track 191°. Expect RADAR vectors to final approach course for RNP, GPS, or ILS RWY 1L approach.

LANDING RUNWAY 1R: From SDKIS on track 141° to SHIBA, then on track 145° to cross FIDVU at 7000 and at 210K, then on track 191° to cross BOOMY at 7000, then on track 191°. Expect RADAR vectors to final approach course for RNP, GPS, or ILS RWY 1R approach.

LANDING RUNWAY 9: From SDKIS on track 160° to HHOLE, then on track 160° to cross GURRA at 5000 and at 210K. Expect RNP Z RWY 9 approach, or expect RADAR vectors to final approach course for ILS or GPS RWY 9 approaches.

LANDING RUNWAY 19L: From SDKIS on track 105° to cross BURBS at or above 5000, then on track 108° to cross FARMS at 4000 and at 210K. Expect RNP Z RWY 19L approach, or expect RADAR vectors to final approach course for ILS or GPS RWY 19L approaches.

LANDING RUNWAY 19R: From SDKIS on track 107° to cross GRYBL at or above 5000, then on track 107° to cross HOLMS at 4000 and at 210K. Expect RNP Z RWY 19R approach, or expect RADAR vectors to final approach course for ILS or GPS RWY 19R approaches.

LANDING RUNWAY 27: From SDKIS on track 125° to ARCOS, then on track 125° to INNIE, then on track 094° to cross BHAMA at 6000 and at 210K, then on track 094°. Expect RADAR vectors to final approach course for RNP, GPS, or ILS RWY 27 approach.

LOST COMMUNICATIONS

RUNWAY 1L: After GOONR proceed to CYPRE at 6000 and hold.

RUNWAY 1R: After BOOMY proceed to SPICY at 6000 and hold.

RUNWAY 9: After GURRA proceed to WOOKIE at 4000, then on ILS or LOC RWY 9 approach.

RUNWAY 19L: After FARMS proceed to MGEEE at 3600, then on ILS or LOC RWY 19L approach.

RUNWAY 19R: After HOLMS proceed to BRTNY at 3300, then on ILS or LOC RWY 19R approach.

RUNWAY 27: After BHAMA maintain 6000, proceed to CARBB and hold.

NC-3, 14 MAY 2026 to 11 JUN 2026

NC-3, 14 MAY 2026 to 11 JUN 2026