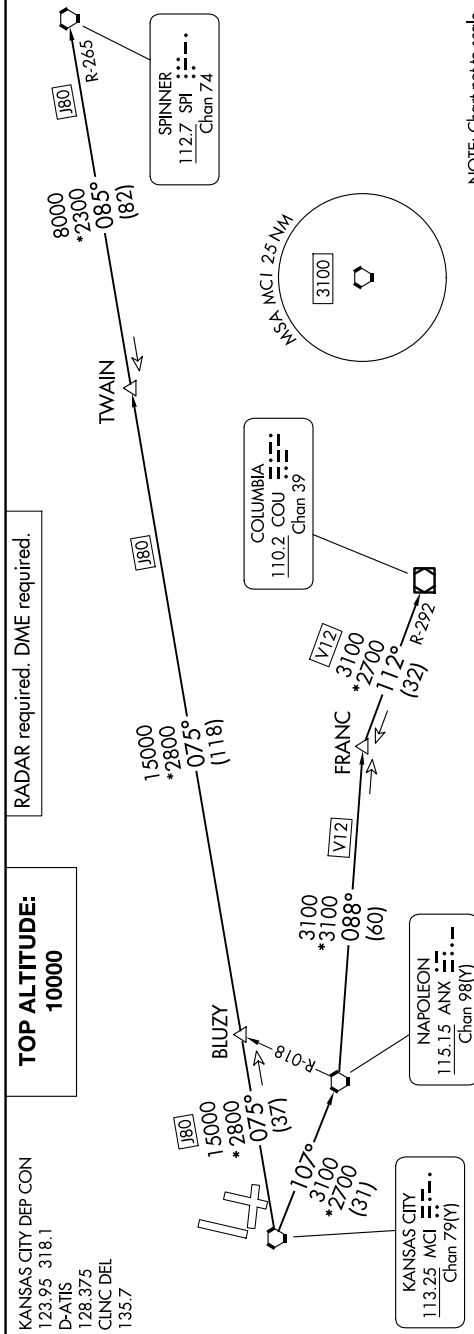


LAKES FIVE DEPARTURE

AL-780 (FAA)

KANSAS CITY INTL (MCI)
KANSAS CITY, MISSOURI

NC-3, 14 MAY 2026 to 11 JUN 2026



NOTE: Chart not to scale.

DEPARTURE ROUTE DESCRIPTION

TAKEOFF ALL RUNWAYS: Climb on assigned heading for RADAR vectors to appropriate route. Maintain 10000 or as assigned by ATC. Expect filed altitude 10 minutes after departure.

COLUMBIA TRANSITION [LAKES5.COU]: From over MCI VORTAC on MCI R-107 to ANX VORTAC, then on ANX R-088 and COU R-292 to COU VOR/DME.

FRANC TRANSITION [LAKES5.FRANC]: From over MCI VORTAC on MCI R-107 to ANX VORTAC, then on ANX R-088 to FRANC.

SPINNER TRANSITION [LAKES5.SPI]: From over MCI VORTAC on MCI R-075 and SPI R-265 to TWAIN, then on SPI R-265 to SPI VORTAC.

TWAIN TRANSITION [LAKES5.TWAIN]: From over MCI VORTAC on MCI R-075 and SPI R-265 to TWAIN.

TOP ALTITUDE:
10000

KANSAS CITY DEP CON
123.95 318.1
D-ATIS
128.375
CLNC DEL
135.7

LAKES FIVE DEPARTURE

(LAKES5.MCI) 05OCT23



TAKEOFF MINIMUMS
Rwys 1L/R, 9, 19L/R, 27: Standard.

NC-3, 14 MAY 2026 to 11 JUN 2026

KANSAS CITY, MISSOURI
KANSAS CITY INTL (MCI)