

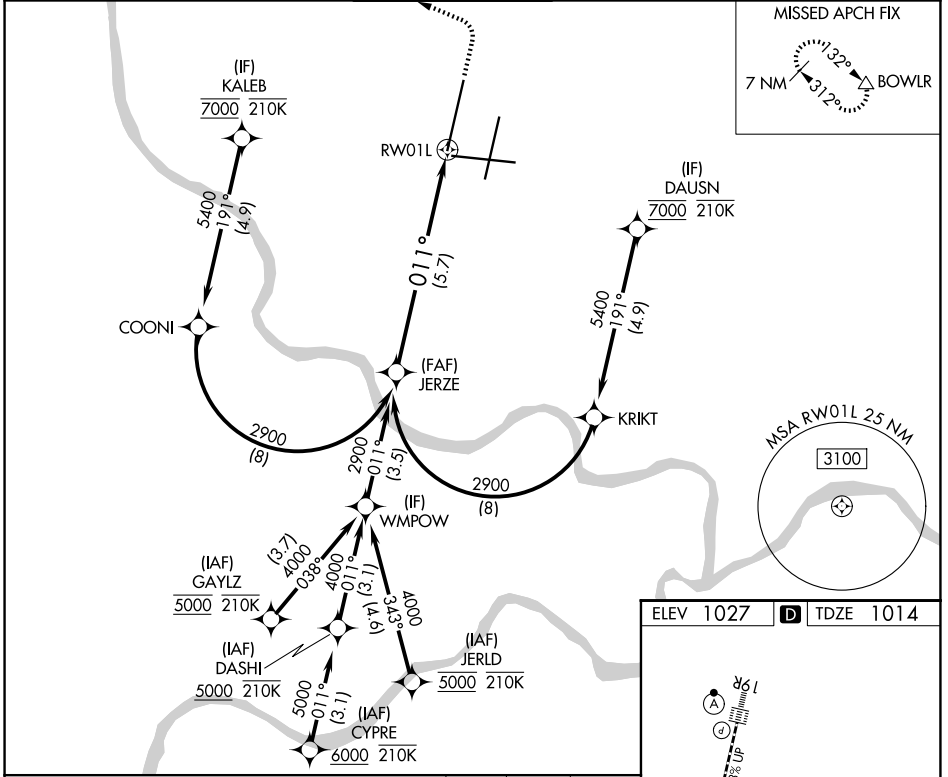
APP CRS	Rwy Ldg	<b>10801</b>
<b>011°</b>	TDZE	<b>1014</b>
	Apt Elev	<b>1027</b>

# RNAV (RNP) Z RWY 1L

KANSAS CITY INTL (MCI)

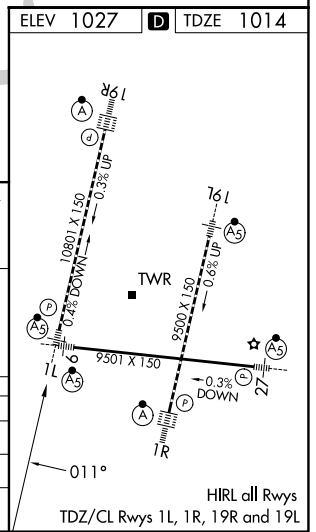
RNP AR APCH - GPS.		MALSR	MISSED APPROACH: Climb to 2000 then climbing left turn to 4000 direct BOWL R and hold.
<p>Use of FD or AP required during simultaneous operations. For uncompensated Baro-VNAV systems, procedure NA below -19°C or above 54°C. For inop ALS, increase RNP 0.10 all Cats visibility to RVR 4000 and RNP 0.30 all Cats visibility to RVR 6000. Simultaneous approach authorized, except for arrivals at KALEB, DAUSN, GAYLZ and JERLD.</p>			

D-ATIS	KANSAS CITY APP CON	INTERNATIONAL TOWER	GND CON	CLNC DEL	CPDLC
<b>128.375</b>	<b>120.95 318.1</b>	<b>128.2 254.25</b>	<b>121.8</b>	<b>135.7</b>	



NC-3, 14 MAY 2026 to 11 JUN 2026

NC-3, 14 MAY 2026 to 11 JUN 2026



<p>JERZE</p> <p>2900</p> <p>GP 3.00° TCH 57</p> <p>See planview for multiple IF locations.</p> <p>5.7 NM</p>		<p>VGSI and RNAV glidepath not coincident (VGSI Angle 3.00/TCH 78).</p>		<p>2000</p> <p>4000</p> <p>BOWL R</p>
CATEGORY	A	B	C	D
RNP 0.10 DA		1264/24	250 (300-½)	
RNP 0.30 DA		1418/40	404 (400-¾)	

## AUTHORIZATION REQUIRED