


RNAV (RNP) Z RWY 9 KANSAS CITY INTL (MCI)

APP CRS	Rwy Ldg	9501
094°	TDZE	1016
	Apt Elev	1027

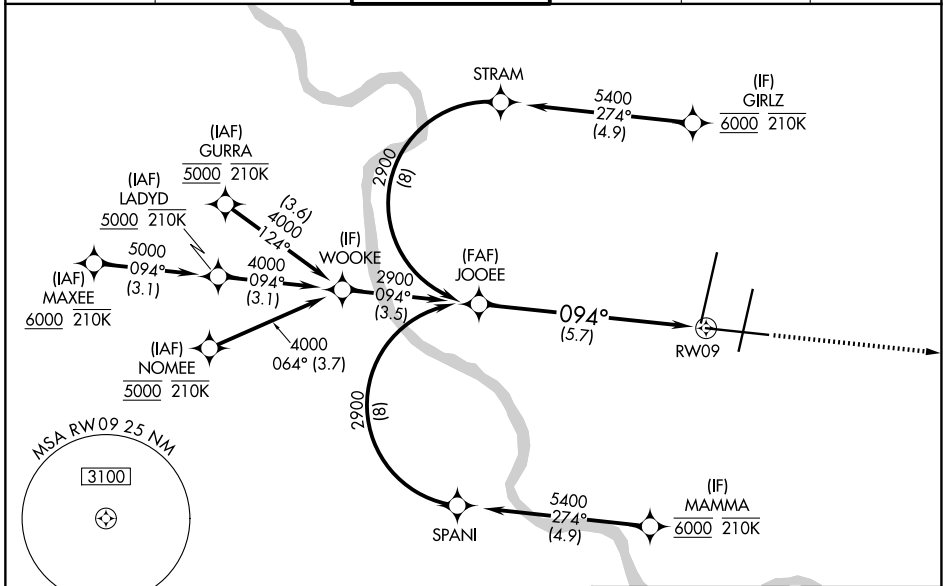
RNP AR APCH - GPS.

▼ For uncompensated Baro-VNAV systems, procedure NA below -19°C or above 54°C. For inop ALS, increase RNP 0.20 all Cats visibility to RVR 4500; increase RNP 0.30 all Cats visibility to RVR 6000.

MALSR 

MISSED APPROACH: Climb to 4000 direct DUSTN and on track 092° LYMES and hold.

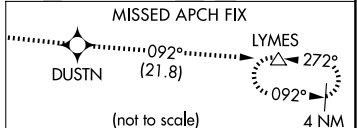
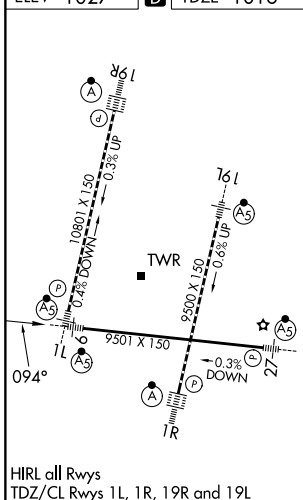
D-ATIS 128.375	KANSAS CITY APP CON 120.95 318.1	INTERNATIONAL TOWER 128.2 254.25	GND CON 121.8	CLNC DEL 135.7	CPDLC
--------------------------	--	--	-------------------------	--------------------------	-------






NC-3, 14 MAY 2026 to 11 JUN 2026

NC-3, 14 MAY 2026 to 11 JUN 2026

ELEV 1027	D	TDZE 1016
-----------	----------	-----------



JOOEE 2900 2900 GP 3.00° TCH 56 5.7 NM RWY 9	4000	DUSTN	tr 092°	LYMES
				
See planview for multiple IF locations.				
CATEGORY	A	B	C	D
RNP 0.20 DA		1319/24	303 (300-1/2)	
RNP 0.30 DA		1418/40	402 (400-3/4)	

AUTHORIZATION REQUIRED