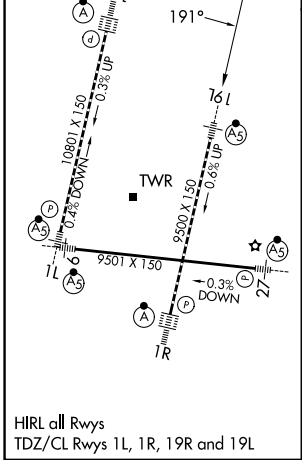
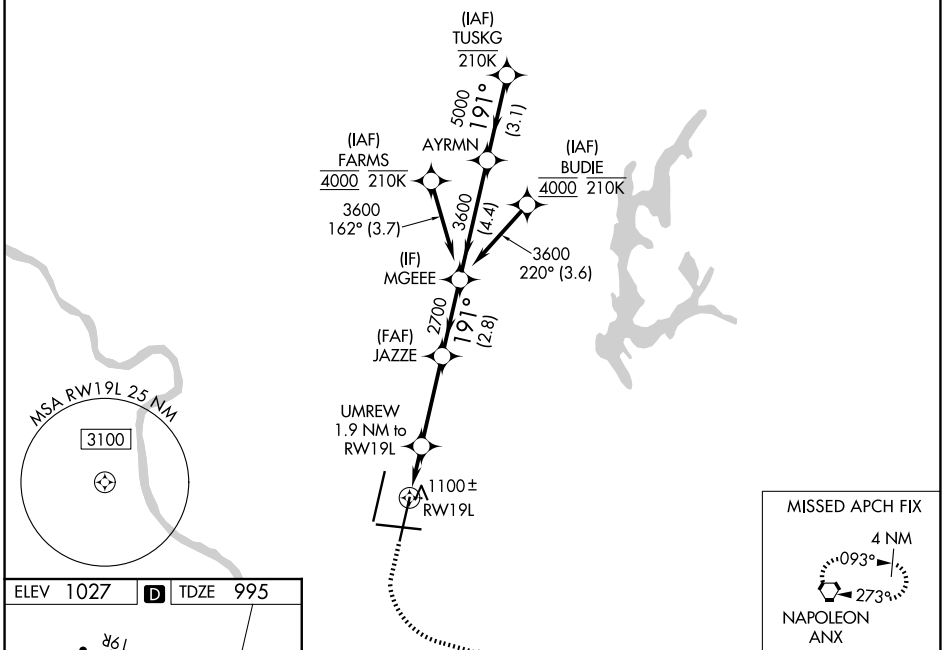


WAAS CH 82108 W19A	APP CRS 191°	Rwy Ldg TDZE 995 Apt Elev 1027
--	------------------------	--

RNAV (GPS) Y RWY 19L

KANSAS CITY INTL (MCI)

RNP APCH - GPS.		MALSR		MISSED APPROACH: Climb to 1500 then climbing left turn to 4000 direct ANX VORTAC and hold.	
<p>▼ Use of FD or AP required during simultaneous operations. LNAV procedure NA during simultaneous operations. For uncompensated Baro-VNAV systems, LNAV/VNAV NA below -21°C or above 54°C. For inop ALS, increase LNAV/VNAV all Cats and LNAV Cats C/D visibility to RVR 5500. Simultaneous approach authorized except from BUDIE and FARMS.</p>					
D-ATIS 128.375	KANSAS CITY APP CON 120.95 318.1	INTERNATIONAL TOWER 128.2 254.25	GND CON 121.8	CLNC DEL 135.7	CPDLC



1500	4000	ANX				
			JAZZE	MGEEE	AYRNM	TUSKG
			UMREW 1.9 NM to RWY 19L	3600	5000	6000
			1 NM to RWY 19L	2700	191°	GP 3.00° TCH 59
			1 NM	0.9 NM	3.3 NM	2.8 NM
			A	B	C	D
CATEGORY	LPV DA	1195/18		200 (200-½)		
CATEGORY	LNAV/VNAV DA	1365/35		370 (400-⅝)		
CATEGORY	LNAV MDA	1360/24	365 (400-½)		1360/35	365 (400-⅝)
CATEGORY	CIRCLING	1540-1	513 (600-1)		1540-1½	1580-2
					513 (600-1½)	553 (600-2)

NC-3, 14 MAY 2026 to 11 JUN 2026

NC-3, 14 MAY 2026 to 11 JUN 2026