

WAAS CH 42808 W01B	APP CRS 011°	Rwy Ldg 10801 TDZE 1014 Apt Elev 1027
--	------------------------	--


RNAV (GPS) Y RWY 1L

KANSAS CITY INTL (MCI)

RNP APCH - GPS.

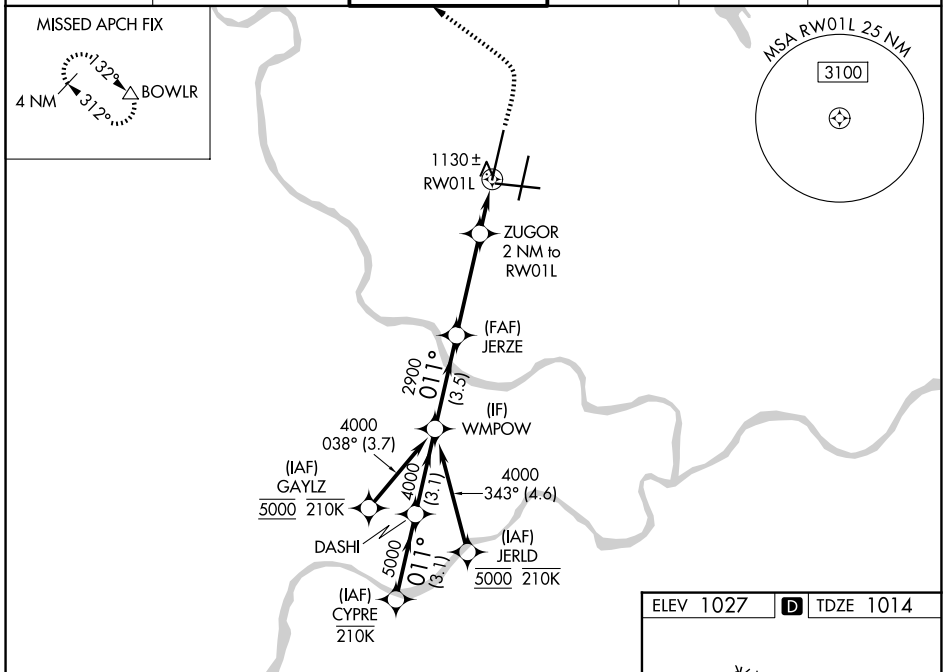
▼ Use of FD or AP required during simultaneous operations. LNAV procedure NA during simultaneous operations. For uncompensated Baro-VNAV systems, LNAV/VNAV NA below -19°C or above 54°C. For inop ALS, increase LNAV/VNAV all Cats visibility to RVR 4500 and LNAV Cats C/D visibility to RVR 5500. Simultaneous approach authorized except from GAYLZ and JERLD.

MALSR

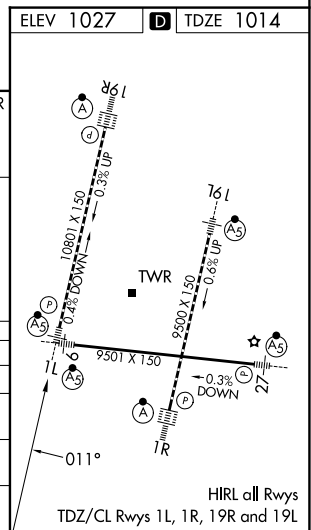


MISSED APPROACH: Climb to 2000 then climbing left turn to 4000 direct BOWL R and hold.

D-ATIS 128.375	KANSAS CITY APP CON 120.95 318.1	INTERNATIONAL TOWER 128.2 254.25	GND CON 121.8	CLNC DEL 135.7	CPDLC
--------------------------	--	--	-------------------------	--------------------------	-------



CYPRE	VGSI and RNAV glidepath not coincident (VGSI Angle 3.00/TCH 78).				2000	4000	BOWL R
	DASHI	WMPPOW	JERZE	ZUGOR			
6000	5000	4000	2900	2000			
GP 3.00° TCH 57			1700	0.9 NM to RW01L			
	~3.1 NM	~3.1 NM	~3.5 NM	~3.7 NM	~1.1 NM	0.9 NM	
CATEGORY	A	B	C	D			
LPV DA	1214/18		200 (200-½)				
LNAV/VNAV DA	1328/24		314 (400-½)				
LNAV MDA	1380/24	366 (400-½)	1380/35	366 (400-¾)			
CIRCLING	1540-1	513 (600-1)	1540-1½	513 (600-1½)	1580-2	553 (600-2)	



NC-3, 14 MAY 2026 to 11 JUN 2026

NC-3, 14 MAY 2026 to 11 JUN 2026