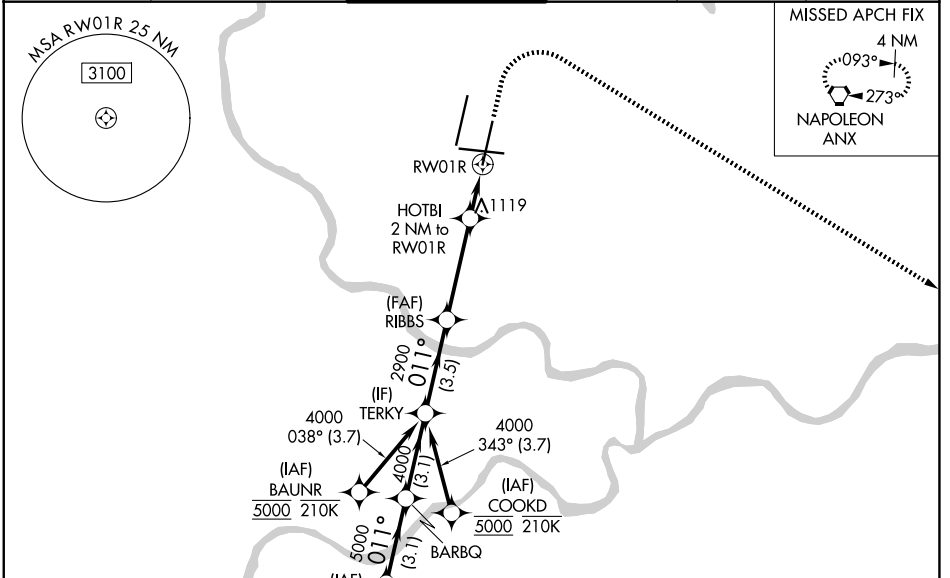


WAAS CH 58208 W01A	APP CRS 011°	Rwy Ldg 9500 TDZE 1017 Apt Elev 1027
---------------------------------	------------------------	---

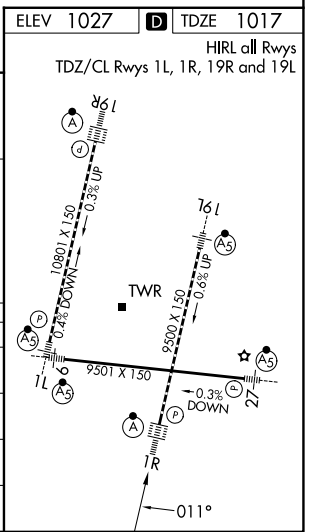
RNAV (GPS) Y RWY 1R

KANSAS CITY INTL (MCI)

RNP APCH - GPS.		ALSF-2		MISSED APPROACH: Climb to 1500 then climbing right turn to 4000 direct ANX VORTAC and hold.	
<p>▼ LNAV procedure NA during simultaneous operations. Use of FD or AP required during simultaneous operations. For uncompensated Baro-VNAV systems, LNAV/VNAV NA below -19°C or above 54°C. Simultaneous approach authorized except from BAUNR or COOKD. For inop ALS, increase LNAV/VNAV all Cats visibility to RVR 4500 and LNAV Cats C/D visibility to RVR 5500.</p>					
D-ATIS 128.375	KANSAS CITY APP CON 120.95 318.1	INTERNATIONAL TOWER 128.2 254.25	GND CON 121.8	CLNC DEL 135.7	CPDLC



SPICY		VGSI and RNAV glidepath not coincident (VGSI Angle 3.00/TCH 74).		1500	4000	ANX
BARBQ		TERKY	RIBBS	HOTBI 2 NM to RW01R	0.9 NM to RW01R	RW01R
6000	5000	4000	2900	1700		
GP 3.00°						
TCH 59						
	← 3.1 NM	← 3.1 NM	← 3.5 NM	← 3.7 NM	← 1.1 NM	← 0.9 NM
CATEGORY	A		B		C	D
LPV DA	1217/18		200 (200-½)			
LNAV/VNAV DA	1311/24		294 (300-½)			
LNAV MDA	1380/24	363 (400-½)	1380/35	363 (400-¾)		
CIRCLING	1540-1	513 (600-1)	1540-1½	513 (600-1½)	1580-2	553 (600-2)



NC-3, 14 MAY 2026 to 11 JUN 2026

NC-3, 14 MAY 2026 to 11 JUN 2026