

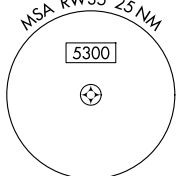
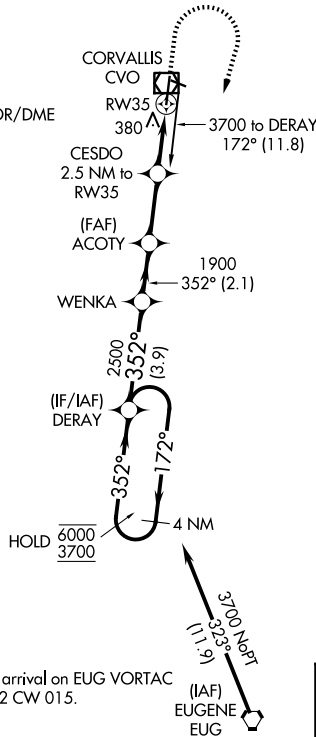
WAAS CH <b>69517</b> <b>W35A</b>	APP CRS <b>352°</b>	Rwy Ldg TDZE <b>250</b> Apt Elev <b>250</b>
--	------------------------	---

# RNAV (GPS) RWY 35

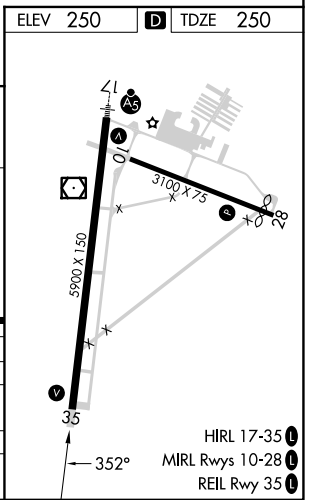
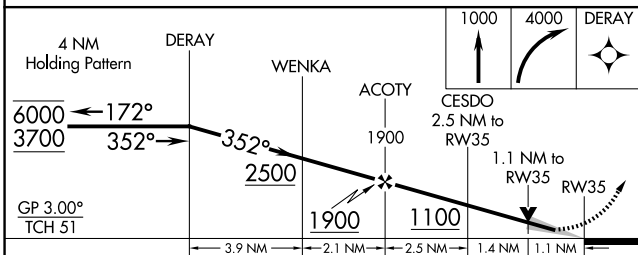
CORVALLIS MUNI (CVO)

RNP APCH - GPS.		MISSED APPROACH: Climb to 1000 then climbing right turn to 4000 direct DERAY and hold, continue climb-in-hold to 4000.
AWOS-3PT <b>135.775</b>	CASCADE APP CON * <b>127.5 348.7</b>	UNICOM <b>123.075 (CTAF) 0</b>

Procedure NA for arrival on CVO VOR/DME airway radials 081 CW 217.



Procedure NA for arrival on EUG VORTAC airway radials 292 CW 015.



CATEGORY	A	B	C	D
LPV DA	500-3/4 250 (300-3/4)			
LNAV/VNAV DA	551-7/8 301 (400-7/8)			
LNAV MDA	640-1	390 (400-1)	640-1 1/8	390 (400-1 1/8)
CIRCLING	720-1 470 (500-1)	740-1 490 (500-1)	920-1 3/4 670 (700-1 3/4)	1080-2 3/4 830 (900-2 3/4)

- HIRL 17-35 1
- MIRL Rwy 10-28 1
- REIL Rwy 35 1

NW-1, 14 MAY 2026 to 11 JUN 2026

NW-1, 14 MAY 2026 to 11 JUN 2026