

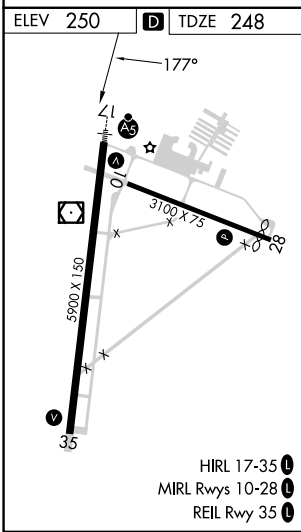
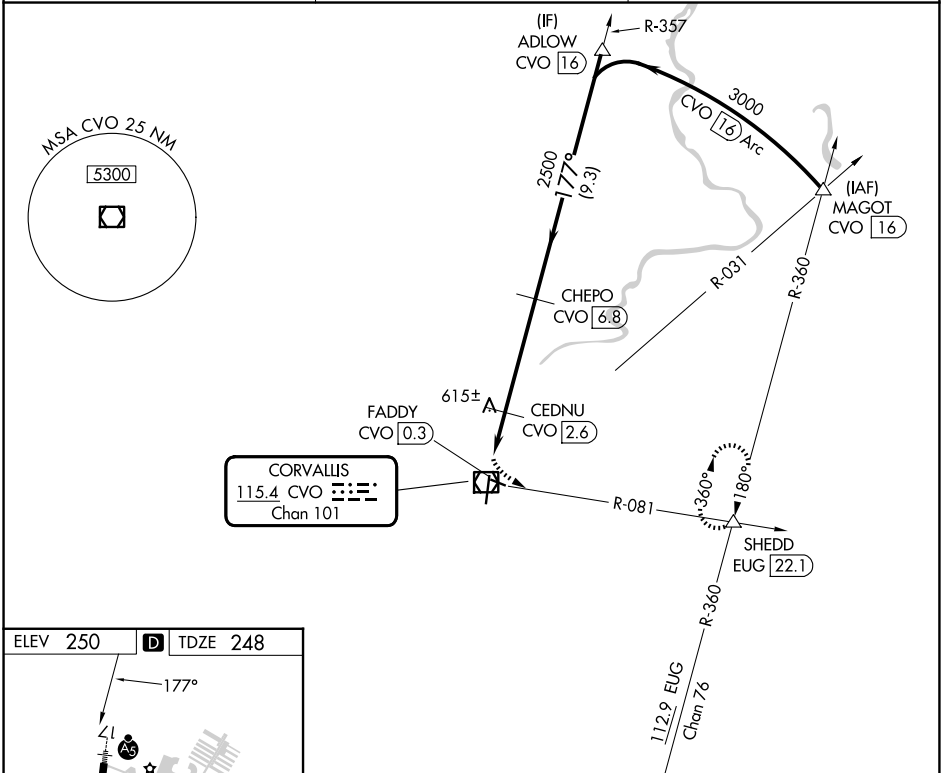
VOR/DME CVO 115.4 Chan 101	APP CRS 177°	Rwy Ldg TDZE 5900 248	Apt Elev 250
--	------------------------	---	------------------------

VOR RWY 17

CORVALLIS MUNI (CVO)

DME required.	MALSR 	MISSED APPROACH: Climbing left turn to 3000 on CVO VOR/DME R-081 to SHEDD INT/EUG 22.1 DME and hold, continue climb-in-hold to 3000.
<p>▼ Circling Rwy 28 NA at night. When local altimeter setting not received, procedure NA. For inop ALS, increase S-17 Cat C/D visibility to 1 3/4 SM.</p> <p>▲</p>		

AWOS-3PT 135.775	CASCADE APP CON * 127.5 348.7	UNICOM 123.075 (CTAF) ☺
----------------------------	---	-----------------------------------



ELEV 250	D	TDZE 248		
3000 CVO R-081	SHEDD CVO R-081	VGSI and descent angles not coincident (VGSI Angle 3.00/TCH 45)	ADLOW CVO 16	
CVO VOR/DME FADDY CVO 0.3	CEDNU CVO 2.6	CHEPO CVO 6.8		
1100	2500	3000		
1.8 NM	0.6	4.1 NM	9.3 NM	
CATEGORY	A	B	C	D
S-17	880-1/2	632 (700-1/2)	880-1 3/8	632 (700-1 3/8)
CIRCLING	880-1	630 (700-1)	920-1 3/4	1080-2 3/4
			670 (700-1 3/4)	830 (900-2 3/4)

NW-1, 14 MAY 2026 to 11 JUN 2026

NW-1, 14 MAY 2026 to 11 JUN 2026