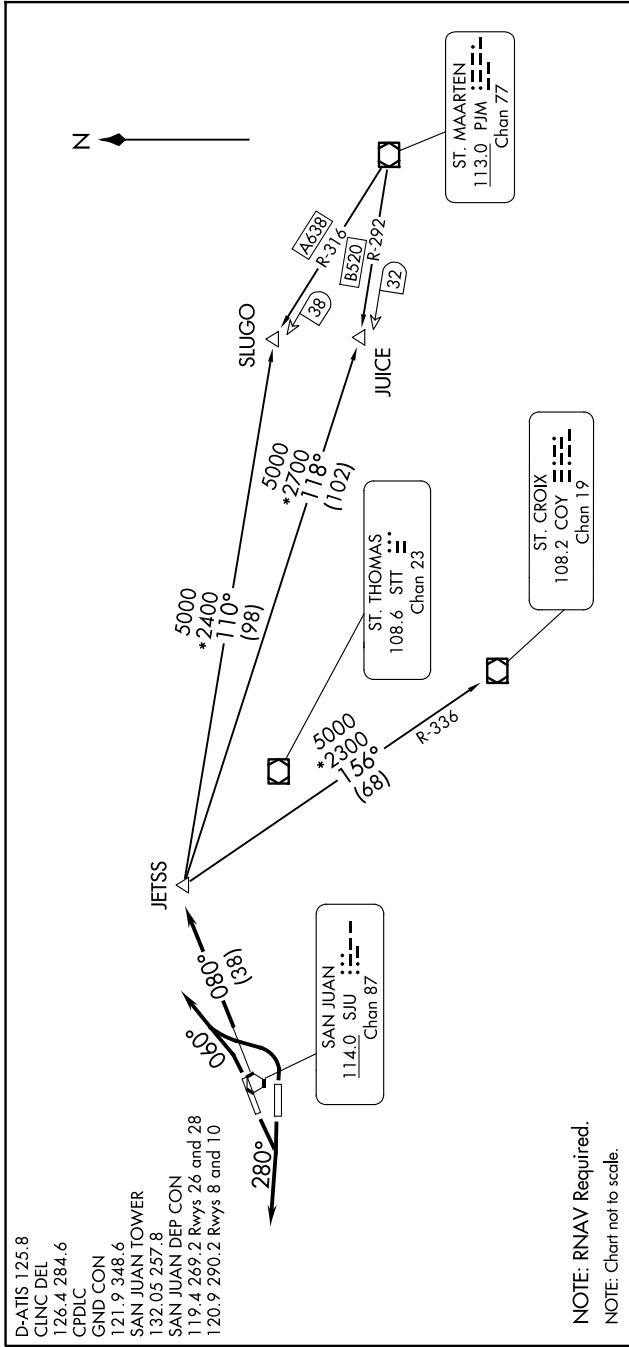


# JETSS ONE DEPARTURE

AL-784 (FAA)

LUIS MUNOZ MARIN INTL (SJU)(TJSJ)  
SAN JUAN, PUERTO RICO

SE-3, 14 MAY 2026 to 11 JUN 2026



NOTE: RNAV Required.  
NOTE: Chart not to scale.

## DEPARTURE ROUTE DESCRIPTION

▶ **TAKE-OFF RUNWAYS 8 AND 10:** Turn left heading 060° for vector to intercept SJU R-080 to JETSS INT. Thence.....

**TAKE-OFF RUNWAYS 26 AND 28:** Fly heading 280° for vector to intercept SJU R-080 to JETSS INT. Thence.....

.....Maintain 5000' unless assigned lower altitude. Expect clearance to FL 280 or requested altitude, if lower, ten (10) minutes after departure.

**JUICE TRANSITION (JETSS1.JUICE):** From over JETSS INT direct to JUICE DME. Thence as filed.

**SLUGO TRANSITION (JETSS1.SLUGO):** From over JETSS INT direct to SLUGO DME. Thence as filed.

**ST. CROIX TRANSITION (JETSS1.COY):** From over JETSS INT direct to COY VOR/DME. Thence as filed.

SE-3, 14 MAY 2026 to 11 JUN 2026