

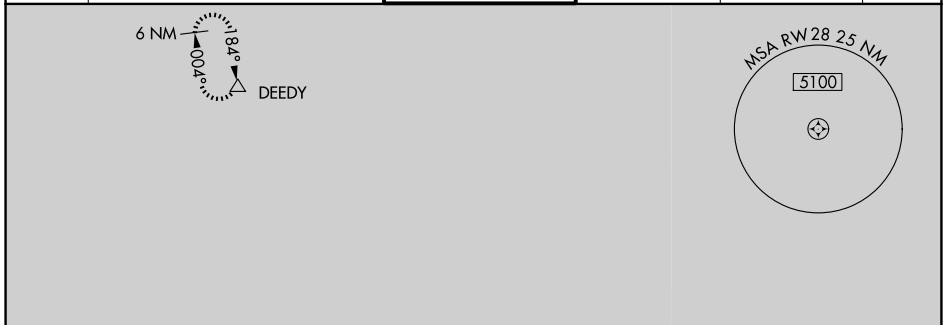
APP CRS	Rwy Ldg	8016
281°	TDZE	10
	Apt Elev	10

RNAV (GPS) RWY 28

LUIS MUNOZ MARIN INTL (SJU)(TJSJ)

RNP APCH.	MISSED APPROACH: Climbing right turn to 3000 direct DEEDY and hold.
Rwy 28 helicopter visibility reduction below 3/4 SM NA.	

D-ATIS	SAN JUAN APP CON	SAN JUAN TOWER	GND CON	CLNC DEL	CPDLC
125.8	119.4 269.2 (WEST & SW) 120.9 290.2 (NORTH & EAST)	132.05 257.8	121.9 348.6	126.4 284.6	

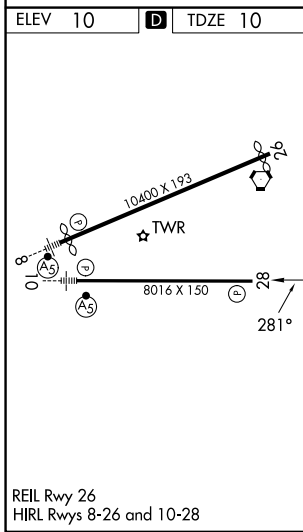


Procedure NA for arrivals at FAJAR on RTE2 eastbound.

Procedure NA for arrivals at CHAKA on RTE6 southeast bound.

SE-3, 14 MAY 2026 to 11 JUN 2026

SE-3, 14 MAY 2026 to 11 JUN 2026



	3000 DEEDY	4 NM Holding Pattern		
CATEGORY	A	B	C	D
LNAV MDA	540-1	530 (600-1)	540-1½	530 (600-1½)
C CIRCLING	600-1	590 (600-1)	740-2 730 (800-2)	920-3 910 (1000-3)