

(BLUEF1.BLF) 25331

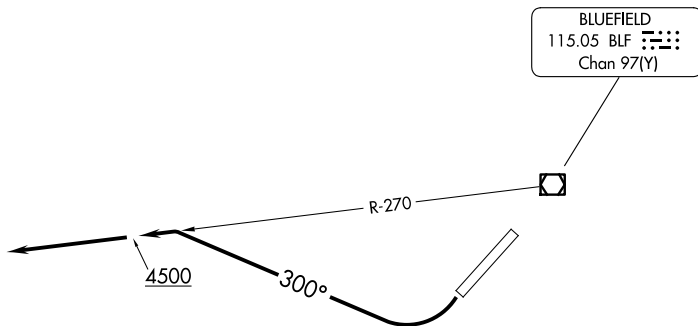
BLUEFIELD ONE DEPARTURE (OBSTACLE) AL-787 (FAA)

MERCER COUNTY (BLF)
BLUEFIELD, WEST VIRGINIA

INDIANAPOLIS CENTER
126.575 257.85
ASOS
132.725
CTAF
122.9

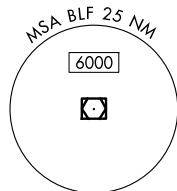
TAKEOFF MINIMUMS

Rwy 23: 300-2 or standard with minimum climb of 255'/NM to 3200.



TAKEOFF OBSTACLE NOTES

- Rwy 23: Trees beginning 12' from DER, 74' right of centerline, up to 66' AGL/2910' MSL.
- Tree, pole beginning 105' from DER, 199' left of centerline, up to 57' AGL/2887' MSL.
- Trees, building, terrain beginning 168' from DER, 70' left of centerline, up to 2900' MSL.
- Tree, tower, antenna beginning 1 NM from DER, 1111' left of centerline, up to 88' AGL/3049' MSL.
- Trees 1.6 NM from DER, 372' right of centerline, 103' AGL/3134' MSL.



NOTE: Chart not to scale.

DEPARTURE ROUTE DESCRIPTION

TAKEOFF RUNWAY 23: Climbing right turn to heading 300° intercept BLF VOR/DME R-270 to 4500 before proceeding on course.

BLUEFIELD ONE DEPARTURE (OBSTACLE)

(BLUEF1.BLF) 27NOV25

BLUEFIELD, WEST VIRGINIA
MERCER COUNTY (BLF)

NE-4, 14 MAY 2026 to 11 JUN 2026

NE-4, 14 MAY 2026 to 11 JUN 2026