

WAAS CH <b>50207</b> <b>W23A</b>	APP CRS <b>229°</b>	Rwy Ldg <b>4743</b> TDZE <b>2856</b> Apt Elev <b>2857</b>
--	------------------------	---

# RNAV (GPS) RWY 23

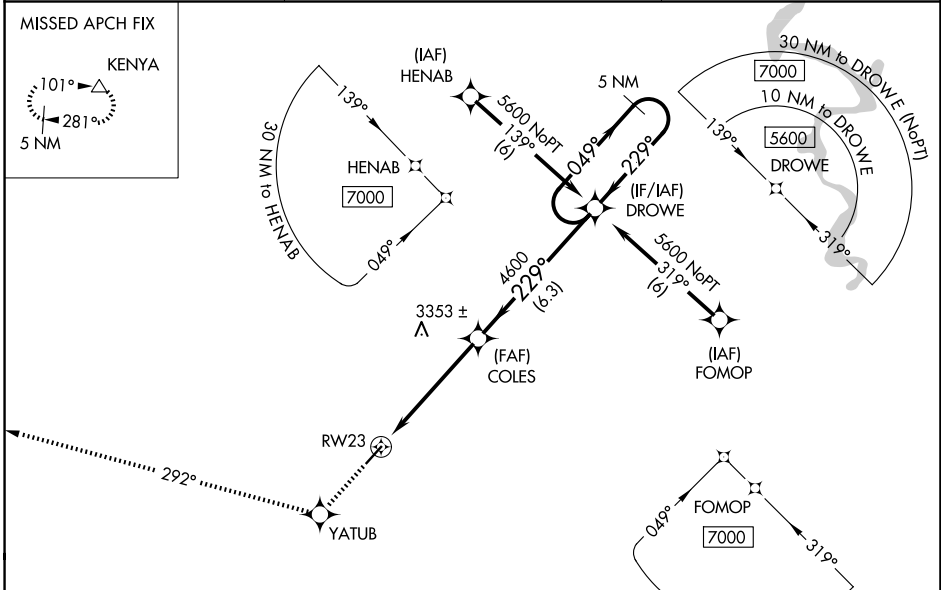
MERCER COUNTY (BLF)

RNP APCH - GPS.

**⚠** When local altimeter setting not received, use BKW altimeter setting and increase all DA 443 feet and all MDA 460 feet; increase LPV all Cats visibility to 2 1/2 SM, LNAV Cat A visibility to 1 1/4 SM, Cat B to 1 1/2 SM, and Cat C and D to 3 SM. Rwy 23 helicopter visibility reduction below 3/4 SM NA. VDP NA when using BKW altimeter setting.

MISSED APPROACH: Climb to 6000 direct YATUB and on track 292° to KENYA and hold.

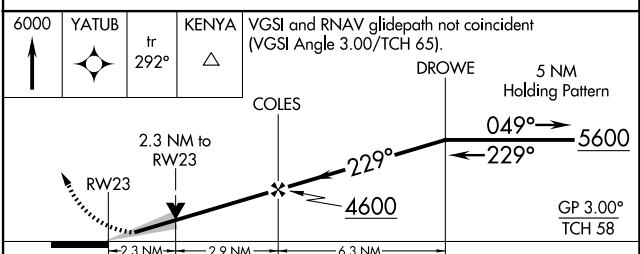
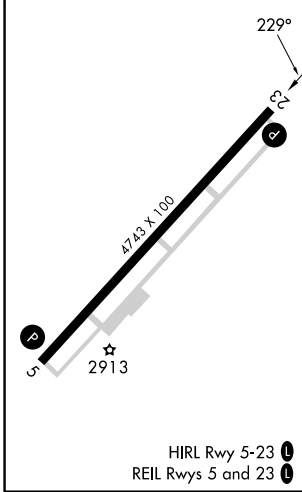
ASOS <b>132.725</b>	INDIANAPOLIS CENTER <b>126.575 257.85</b>	CTAF <b>122.9</b>
------------------------	--	----------------------



NE-4, 14 MAY 2026 to 11 JUN 2026

NE-4, 14 MAY 2026 to 11 JUN 2026

ELEV 2857	<b>D</b> TDZE 2856
-----------	--------------------



CATEGORY	A	B	C	D
LPV DA	3156-1 300 (300-1)			
LNAV MDA	3640-1 784 (800-1)	3640-1 1/4 784 (800-1 1/4)	3640-2 1/2 784 (800-2 1/2)	