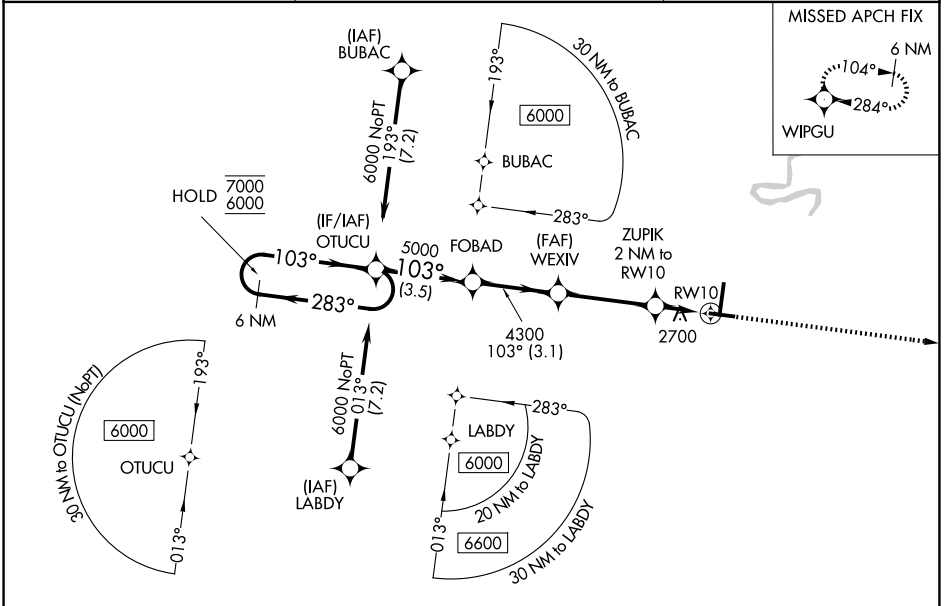


WAAS CH 82023 W10A	APP CRS 103°	Rwy Ldg TDZE Apt Elev	5001 2502 2504
--	------------------------	-----------------------------	---

RNAV (GPS) RWY 10

RALEIGH COUNTY MEML (BKW)

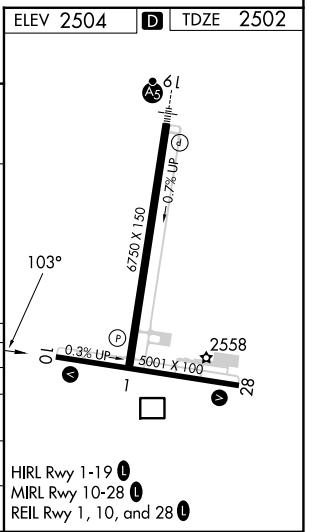
RNP APCH - GPS.		MISSED APPROACH: Climb to 6300 direct WIPGU and hold, continue climb-in-hold to 6300.
	For uncompensated Baro-VNAV systems, LNAV/VNAV NA below -14°C or above 54°C.	
ASOS 121.55	CHARLESTON APP CON 125.4 269.125	UNICOM 123.0 (CTAF) 0



NE-4, 14 MAY 2026 to 11 JUN 2026

NE-4, 14 MAY 2026 to 11 JUN 2026

ELEV 2504		D TDZE 2502		
6 NM Holding Pattern OTUCU		6300 WIPGU		
<p>7000 ← 283°</p> <p>6000 ← 103°</p> <p>GP 3.00° TCH 59</p>		<p>5000</p> <p>4300</p> <p>3180</p> <p>1.3 NM to RWY 10</p> <p>RWY 10</p>		
CATEGORY	A	B	C	D
LPV DA	2702-3/4		200 (200-3/4)	
LNAV/VNAV DA	3016-13/8		514 (600-13/8)	
LNAV MDA	2960-1	458 (500-1)	2960-13/8	458 (500-13/8)
CIRCLING	3120-1 616 (700-1)	3180-1 676 (700-1)	3320-2 1/2 816 (900-2 1/2)	3500-3 996 (1000-3)



HIRL Rwy 1-19
MIRL Rwy 10-28
REIL Rwy 1, 10, and 28