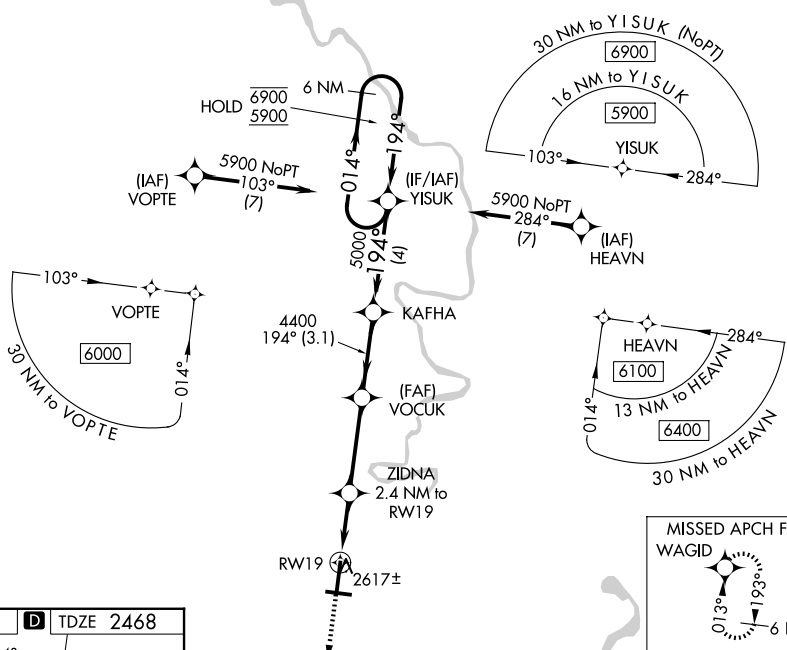


WAAS CH <b>63011</b> <b>W19A</b>	APP CRS <b>194°</b>	Rwy Ldg TDZE Apt Elev	<b>6750</b> <b>2468</b> <b>2504</b>
--	------------------------	-----------------------------	---

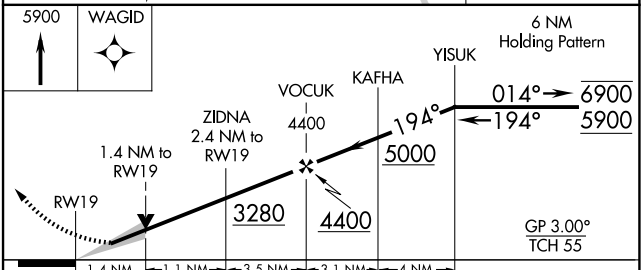
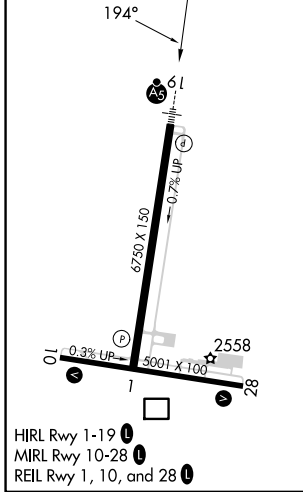
# RNAV (GPS) RWY 19

RALEIGH COUNTY MEML (BKW)

RNP APCH - GPS.		MALSR	MISSED APPROACH: Climb to 5900 direct WAGID and hold, continue climb-in-hold to 5900.
Baro-VNAV NA. For inop ALS, increase LNAV/VNAV all Cats visibilities to 1 SM, LNAV visibilities Cats C/D to 1 3/8 SM.			
ASOS <b>121.55</b>	CHARLESTON APP CON <b>125.4 269.125</b>	UNICOM <b>123.0 (CTAF) 0</b>	



ELEV 2504	<b>D</b>	TDZE 2468
-----------	----------	-----------



CATEGORY	A	B	C	D
LPV DA		2688-1/2	220 (200-1/2)	
LNAV/VNAV DA		2818-5/8	350 (400-5/8)	
LNAV MDA	2940-1/2	472 (500-1/2)	2940-1	472 (500-1)
CIRCLING	3120-1 616 (700-1)	3180-1 676 (700-1)	3320-2 1/2 816 (900-2 1/2)	3500-3 996 (1000-3)

NE-4, 14 MAY 2026 to 11 JUN 2026

NE-4, 14 MAY 2026 to 11 JUN 2026