

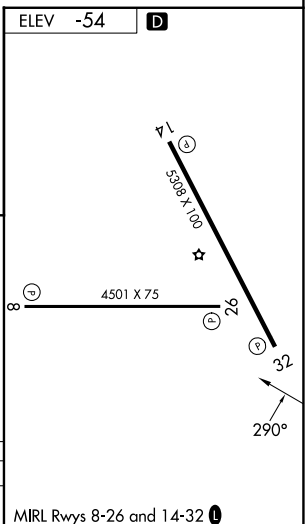
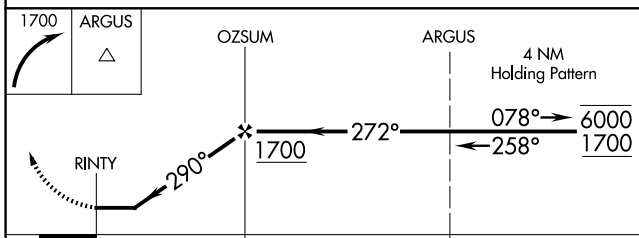
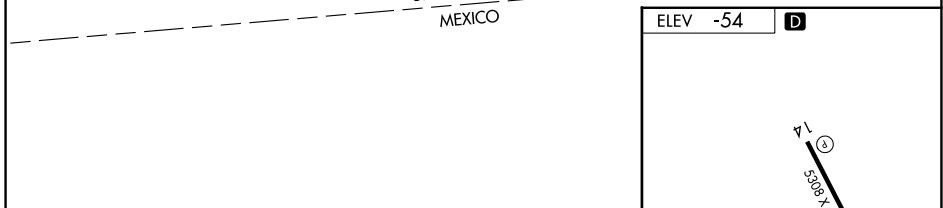
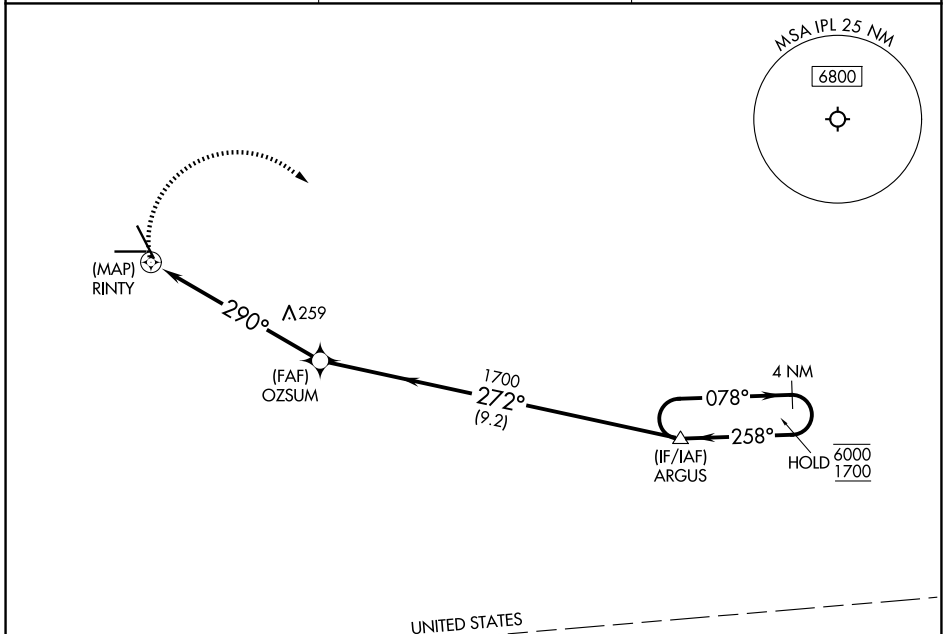
APP CRS	Rwy Ldg	N/A
<b>290°</b>	TDZE	N/A
	Apt Elev	<b>-54</b>

# RNAV (GPS)-B

IMPERIAL COUNTY (IPL)

RNP APCH - GPS.	MISSED APPROACH: Climbing right turn to 1700 direct ARGUS and hold.
▼ When local altimeter setting not received, procedure NA. Circling Rwy 32 NA at night.	

ASOS <b>132.175</b>	YUMA CERAP <b>132.275 292.2</b>	UNICOM <b>122.7 (CTAF) 0</b>
------------------------	------------------------------------	---------------------------------



CATEGORY	A	B	C	D
CIRCLING	560-1	614 (700-1)	560-1¾ 614 (700-1¾)	560-2 614 (700-2)

MIRL Rwy 8-26 and 14-32 0

SW-3, 14 MAY 2026 to 11 JUN 2026

SW-3, 14 MAY 2026 to 11 JUN 2026